

Quick
Possession

Weston
AT EDMONTON

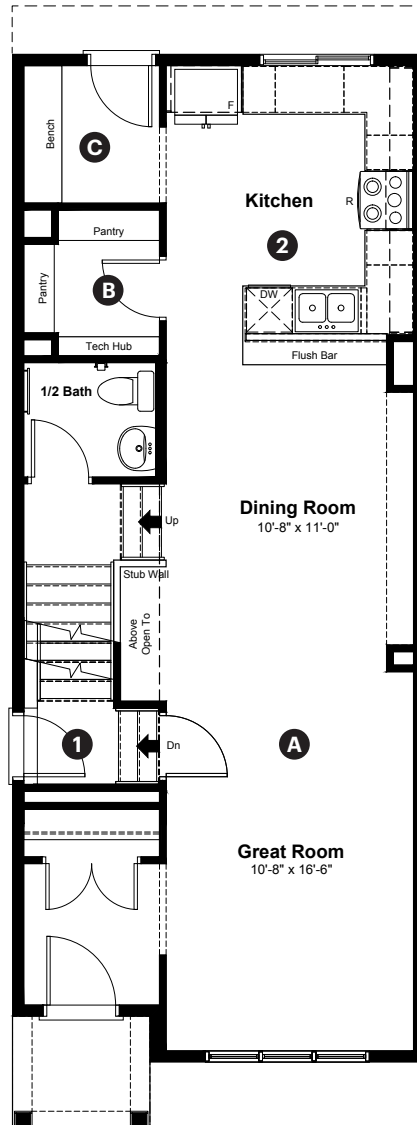
331 Edgemont
Drive NW
Edmonton, AB

1,598 sq ft
3 bedrooms
2.5 bathrooms

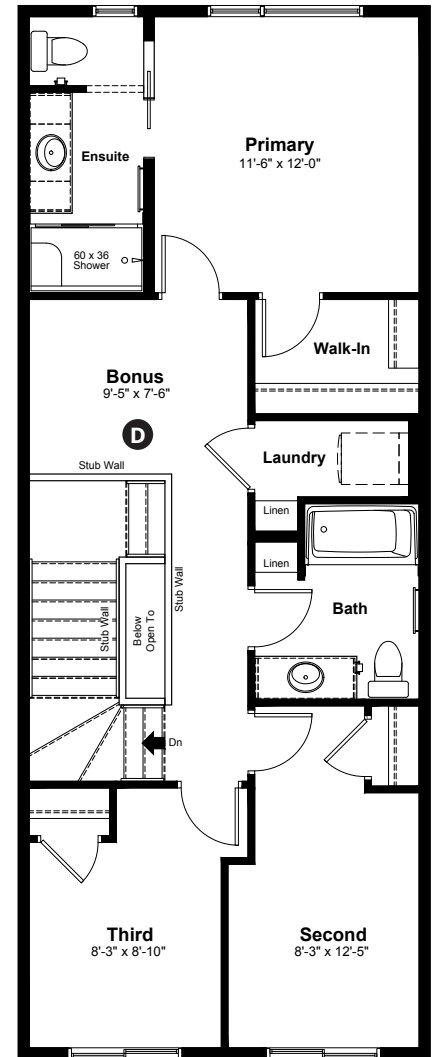
Craftsman
Elevation

Anthem

Main Floor: 780 sq ft



Upper Floor: 818 sq ft



Quick Possession Home Options

- 1 Side entrance
- 2 Level 2 kitchen cabinet layout

Quick Possession Home Highlights

- A 9' high main floor ceilings
- B Spacious pantry
- C Built in bench in mudroom
- D Upstairs bonus room

Dimensions, sizes, specifications, layouts and materials are approximate only and subject to change without notice. The builder reserves the right to make change and modifications to the information contained herein. E.&O.E.

Laned 180

Quick
Possession

Weston
AT EDMONTON

331 Edgemont
Drive NW
Edmonton, AB

1,598 sq ft
3 bedrooms
2.5 bathrooms

Craftsman
Elevation

Anthem



Features

Anthem Construction Standards

- Low maintenance architectural asphalt shingles
- Anthem maximizes window coverage on every home to provide your home with natural light . Windows are also triple plane low-E argon filled windows above grade
- Includes a 50 gallon gas water tank and 96% high-efficient gas furnace with dual-stage with variable speeds. It also has an integrated HRV system with dedicated pick-up locations in each bathroom with timers for easy use
- Decora type switches throughout the home
- R-50 blown insulation in all attic spaces
- Rough-in waterline to the fridge

The Interior

- Ceilings are finished with a splatter texture
- Luxury vinyl plank flooring on main floor
- Luxury vinyl tile flooring in upper bathrooms and laundry
- Carpet on finished stairs and upstairs with an 8lb underlay
- Secondary cabinet colour
- Upgraded 3CM quartz countertops in kitchen
- Upgraded undermount silgranit kitchen sink
- Upgraded matte black faucet in kitchen and bathrooms
- Upgraded kitchen backsplash tile
- Upgraded matte black plumbing fixtures in bathrooms
- Undermount sink in full bathrooms
- Upgraded pedestal sink in half bathroom
- Stainless steel appliance package
- Upgraded interior door hardware
- Upgraded electrical panel in 150 amps

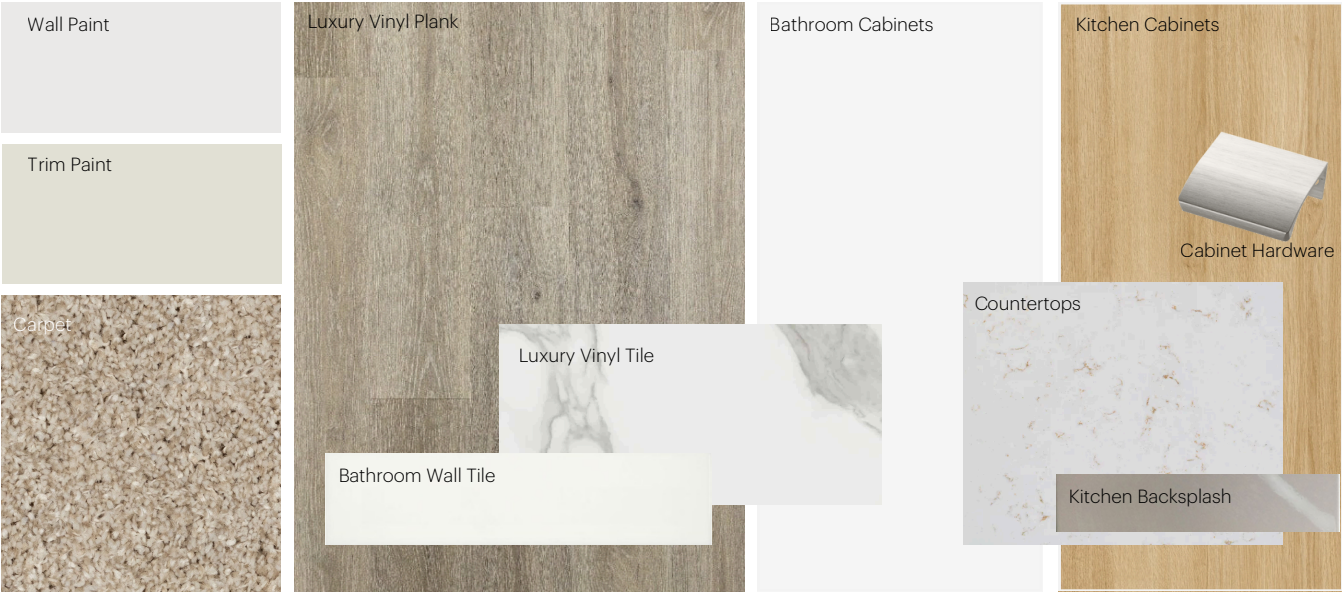
Dimensions, sizes, specifications, layouts and materials are approximate only and subject to change without notice. The builder reserves the right to make change and modifications to the information contained herein. E.&O.E.

Laned 180

Anthem Home Palette Selections

Model: Laned 180
 Address: 331 Edgemont Drive, Edmonton AB

Cabinets, Flooring and Countertops



Plumbing



Finishing



Anthem Home Palette Selections

Model: Laned 180

Address: 331 Edgemont Drive, Edmonton AB

Lighting



Dining Room



Island Pendant



Bedrooms



Bathrooms

*Number of lights determined by size of vanity

Appliances



Fridge



Electric Range



Dishwasher



OTR Microwave

