

Quick  
Possession

Weston  
AT EDMONTON

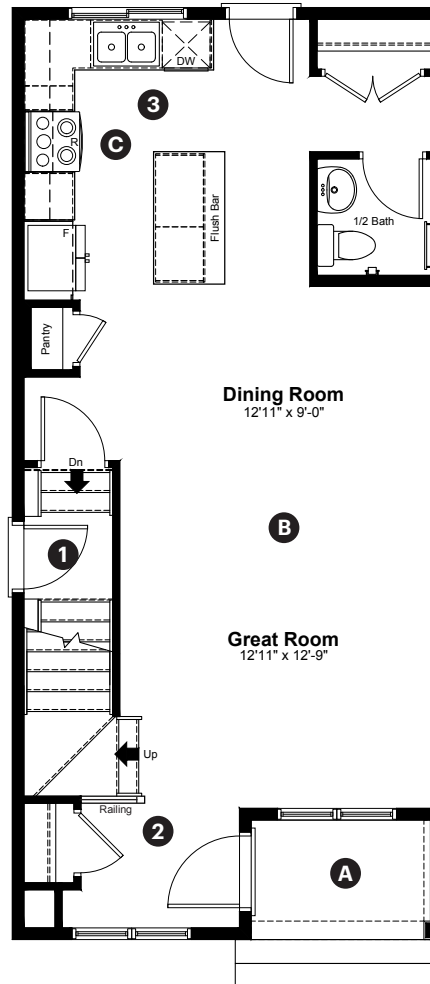
335 Edgemont  
Drive NW  
Edmonton, AB

1,364 sq ft  
3 bedrooms  
2.5 bathrooms

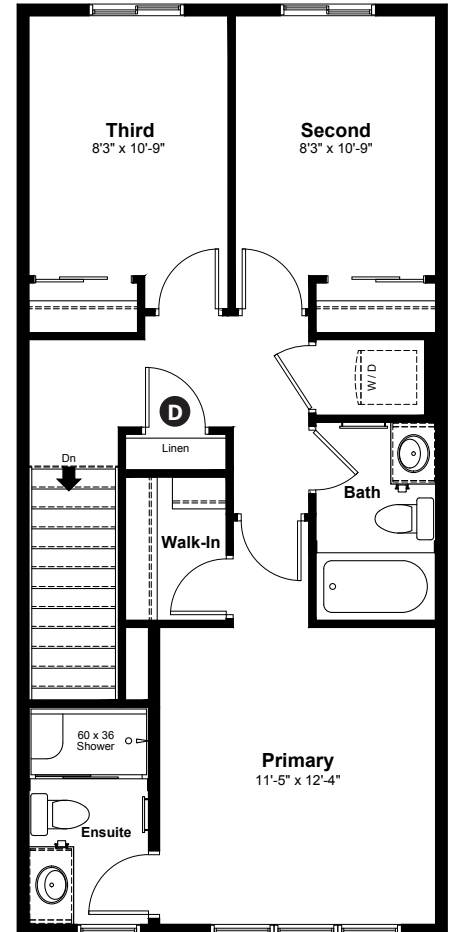
Craftsman  
Elevation

Anthem

Main Floor: 662 sq ft



Upper Floor: 702 sq ft



#### Quick Possession Home Options

- 1 Side entry
- 2 Main floor railing
- 3 Level 2 kitchen cabinet layout

#### Quick Possession Home Highlights

- A Front porch
- B 9' high main floor ceilings
- C Rear kitchen
- D Upstairs linen closet

Dimensions, sizes, specifications, layouts and materials are approximate only and subject to change without notice. The builder reserves the right to make change and modifications to the information contained herein. E.&O.E.

Laned 150

Quick  
Possession

Weston  
AT EDMONTON

335 Edgemont  
Drive NW  
Edmonton, AB

1,364 sq ft  
3 bedrooms  
2.5 bathrooms

Craftsman  
Elevation

Anthem



Artists interpretation only. May not reflect actual colours.

Craftsman

## Features

### Anthem Construction Standards

- Low maintenance, 30-year architectural asphalt shingles
- Anthem maximizes window coverage on every home to provide your home with natural light
- Windows are also triple plane low-E argon filled windows above grade
- Includes an 80 gallon electric water tank and 96% high-efficient gas furnace with dual-stage with variable speeds. It also has an integrated HRV system with dedicated pick up locations in each bathroom with timers for easy use
- Decora type switches throughout the home
- R-50 blown insulation in all attic spaces
- Rough-in waterline to fridge

### The Interior

- Ceilings are finished with a splatter texture
- Luxury vinyl plank flooring on main floor
- Luxury vinyl tile flooring in upper bathrooms and laundry
- Carpet on finished stairs and upstairs with an 8lb underlay
- Quartz countertops in kitchen and bathrooms
- Elevated kitchen backsplash selection
- Undermount stainless steel kitchen sink
- Undermount bathroom sinks
- Stainless steel appliance package
- 9' basement foundation

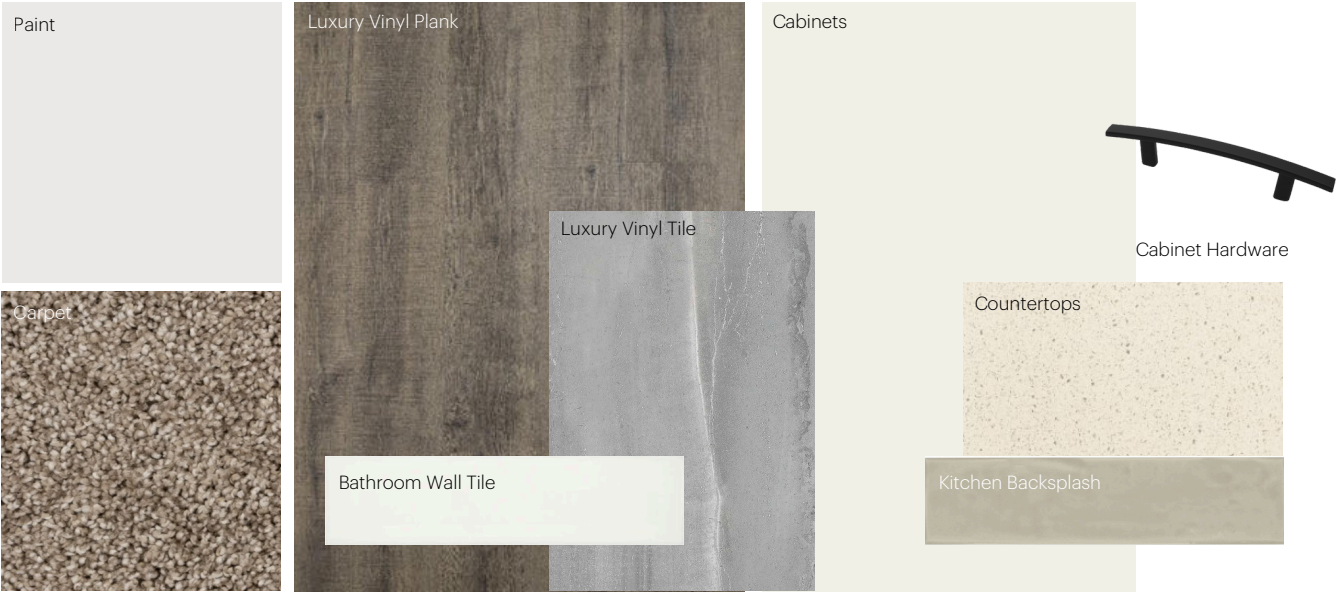
Dimensions, sizes, specifications, layouts and materials are approximate only and subject to change without notice. The builder reserves the right to make change and modifications to the information contained herein. E.&O.E.

Laned 150

# Anthem Home Palette Selections

**Model:** Laned 150
 **Address:** 335 Edgemont Drive, Edmonton AB

## Cabinets, Flooring and Countertops



## Plumbing



## Finishing



# Anthem Home Palette Selections

**Model:** Laned 150

**Address:** 335 Edgemont Drive, Edmonton AB

## Lighting



Dining Room



Island Pendants



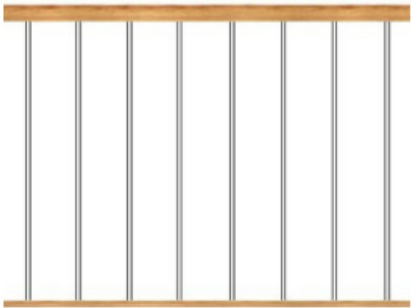
Bathrooms

\*Number of lights determined by size of vanity

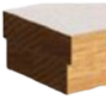


Bedrooms

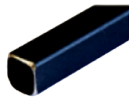
## Railing



Spindle Pattern



Handrail



Iron Color

Post Cap



Post

\* Handrail, post and cap painted to match the trim color

## Appliances



Fridge



Microwave Hoodfan



Stove



Dishwasher

