

Quick
Possession

Weston
AT EDMONTON

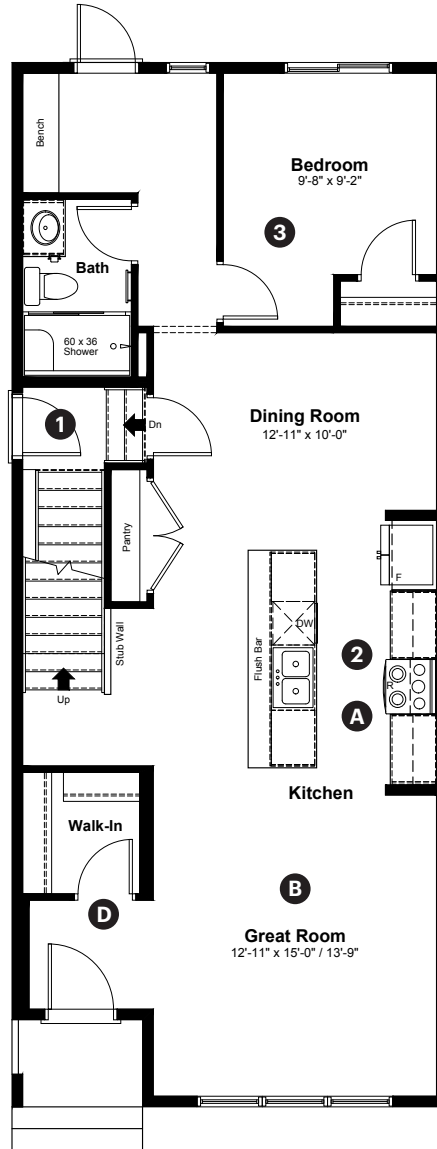
333 Edgemont
Drive NW
Edmonton, AB

1,844 sq ft
4 bedrooms
3 bathrooms

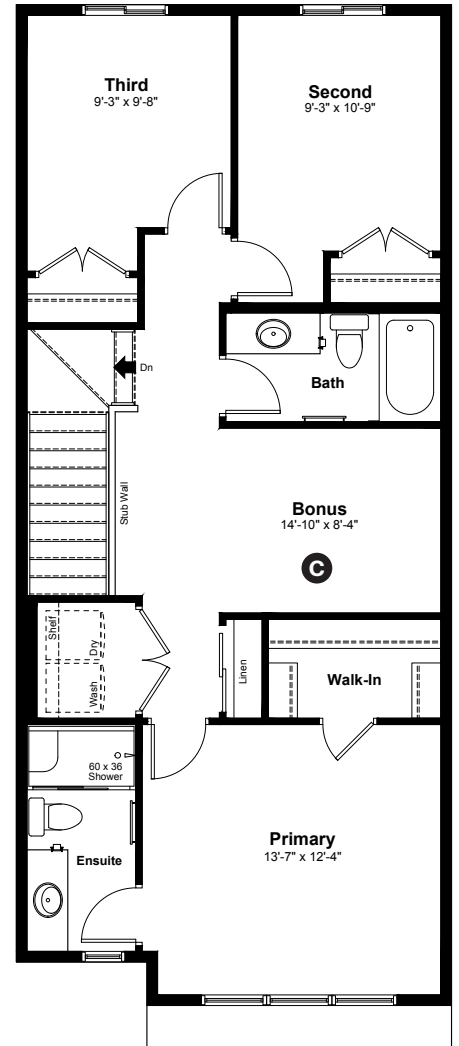
Prairie Elevation

Anthem

Main Floor: 936 sq ft



Upper Floor: 908 sq ft



Quick Possession Home Options

- 1 Side entrance
- 2 Level 2 kitchen cabinet layout
- 3 Main floor bedroom and full bathroom option

Quick Possession Home Highlights

- A Centre kitchen
- B 9' high main floor ceilings
- C Central bonus room
- D Large front entry closet

Dimensions, sizes, specifications, layouts and materials are approximate only and subject to change without notice. The builder reserves the right to make change and modifications to the information contained herein. E.&O.E.

Laned 130

Quick
Possession

Weston
AT EDMONTON

333 Edgemont
Drive NW
Edmonton, AB

1,844 sq ft
4 bedrooms
3 bathrooms

Prairie Elevation

Anthem



Features

Anthem Construction Standards

- Low maintenance architectural asphalt shingles
- Anthem maximizes window coverage on every home to provide your home with natural light . Windows are also triple plane low-E argon filled windows above grade
- Includes a 50 gallon gas water tank and 96% high-efficient gas furnace with dual-stage with variable speeds. It also has an integrated HRV system with dedicated pick-up locations in each bathroom with timers for easy use
- Decora type switches throughout the home
- R-50 blown insulation in all attic spaces
- Rough-in waterline to the fridge

The Interior

- Ceilings are finished with a splatter texture
- Luxury vinyl plank flooring on main floor
- Upgrade luxury vinyl tile flooring in upper bathrooms and laundry
- Carpet on finished stairs and upstairs with an 8lb underlay
- Secondary cabinet color
- Upgraded 3CM quartz countertops in kitchen and bathrooms
- Upgraded interior door hardware
- Upgraded undermount silgranit kitchen sink
- Upgraded kitchen backsplash tile
- Handshower added to main floor bathroom
- Undermount sink in bathrooms
- Stainless steel appliance package
- Upgraded dining room light fixture and pendant light fixtures over island
- 9' high basement foundation
- Rough-ins added for future sink in basement and for washer
- Upgraded 150 amps electrical panel

Dimensions, sizes, specifications, layouts and materials are approximate only and subject to change without notice. The builder reserves the right to make change and modifications to the information contained herein. E.&O.E.

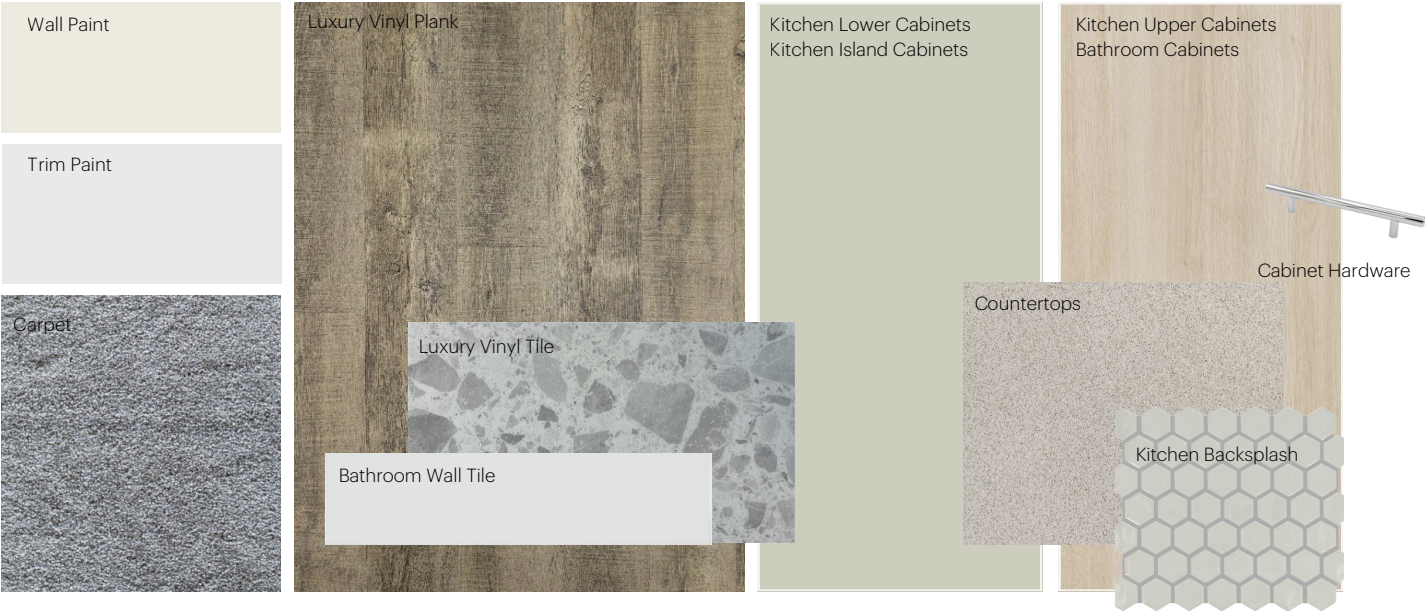
Laned 130

Anthem Home Palette Selections

Model: Laned 130

Address: 333 Edgemont Drive, Edmonton AB

Cabinets, Flooring and Countertops



Plumbing



Finishing



Anthem Home Palette Selections

Model: Laned 130
 Address: 333 Edgemont Drive, Edmonton AB

Lighting



Dining Room



Island Pendant



Bedrooms



Bathrooms

*Number of lights determined by size of vanity

Appliances



Fridge



Electric Range



Dishwasher



OTR Microwave

