

Quick Possession



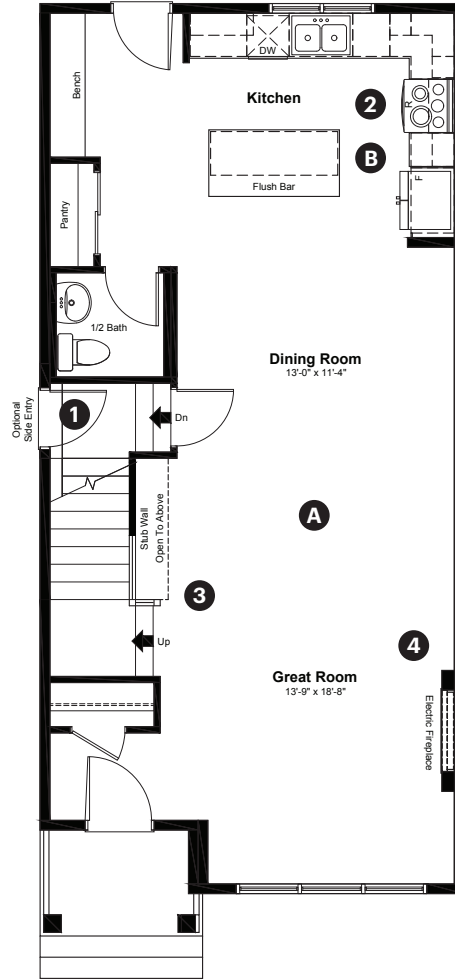
Weston
AT EDMONTON

329 Edgemont Drive NW
Edmonton, AB

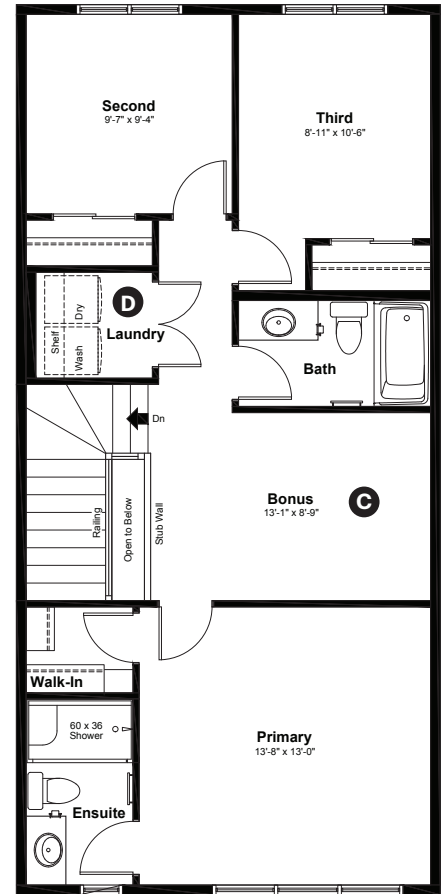
1,647 sq ft
3 bedrooms
2.5 bathrooms

Prairie Elevation

Main Floor: 817 sq ft



Upper Floor: 830 sq ft



Quick Possession Home Options

- 1 Side entrance
- 2 Level 2 kitchen cabinet layout
- 3 Main floor railing
- 4 Electric Fireplace

Quick Possession Home Highlights

- A 9' high main floor ceilings
- B Rear kitchen
- C Central bonus room
- D Spacious laundry room

Dimensions, sizes, specifications, layouts and materials are approximate only and subject to change without notice. The builder reserves the right to make change and modifications to the information contained herein. E.&O.E.

Laned 110

Quick
Possession

Anthem 

Weston
AT EDMONTON

**329 Edgemont
Drive NW
Edmonton, AB**

1,647 sq ft
3 bedrooms
2.5 bathrooms

Prairie Elevation



Features

Anthem Construction Standards

- Low maintenance architectural asphalt shingles
- Anthem maximizes window coverage on every home to provide your home with natural light . Windows are also triple plane low-E argon filled windows above grade
- Includes an 50-gallon gas water tank and 96% high-efficient gas furnace with dual-stage with variable speeds. It also has an integrated HRV system with dedicated pick-up locations in each bathroom with timers for easy use
- Decora type switches throughout the home
- R-50 blown insulation in all attic spaces
- Rough-in waterline to the fridge

The Interior

- Ceilings are finished with a splatter texture
- Luxury vinyl plank flooring on main floor
- Upgraded luxury vinyl tile flooring in upper bathrooms and laundry
- Carpet on finished stairs and upstairs with an 8lb underlay
- Secondary cabinet color
- Upgraded 3 CM quartz countertops in kitchen and bathrooms
- Upgraded matte black plumbing fixtures in kitchen and bathrooms
- Upgraded undermount silgranit kitchen sink
- Upgraded kitchen backsplash
- Stainless steel appliance package
- Upgraded light fixture in dining area
- Undermount bathroom sinks
- Iron railing on main floor stairwell
- Upgraded 150 amp electrical panel
- 9' high basement foundation

Dimensions, sizes, specifications, layouts and materials are approximate only and subject to change without notice. The builder reserves the right to make change and modifications to the information contained herein. E.&O.E.

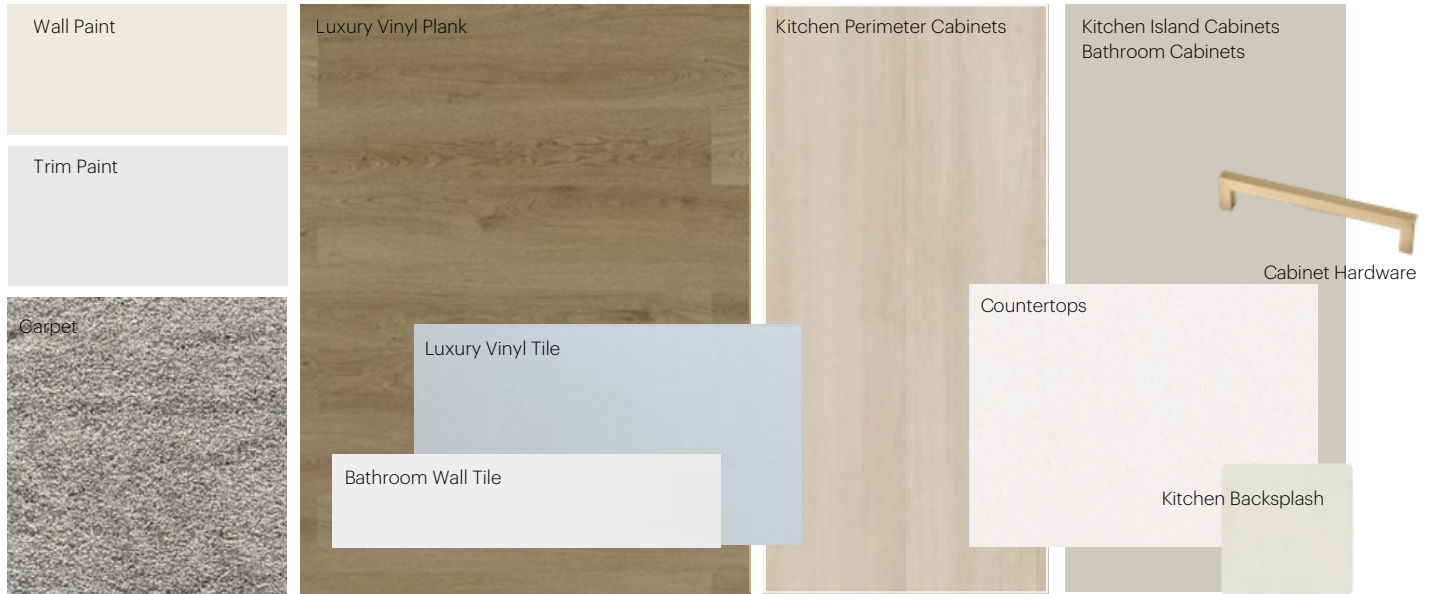
Laned 110

Anthem Home Palette Selections

Model: Laned 110

Address: 329 Edgemont Drive NW, Edmonton AB

Cabinets, Flooring and Countertops



Plumbing



Kitchen Sink



Kitchen Faucet



Pedestal Sink
*faucet shown is not included



Bathroom Sink



Bathroom Faucet



Tub / Shower Faucet

Finishing



Interior Door Knob



Bathroom Accessories



Interior Doors



Anthem Home Palette Selections

Model: Laned 110

Address: 329 Edgemont Drive NW, Edmonton AB

Lighting



Dining Room



Island Pendant



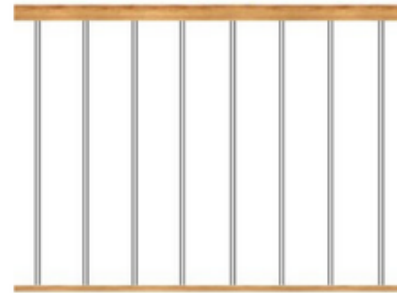
Bathrooms

*Number of lights determined by size of vanity



Bedrooms

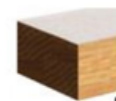
Railing



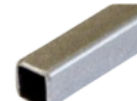
Spindle Pattern



Post Cap



Handrail



Iron Color

Post

* Handrail, post and cap painted to match the trim color

Appliances



Fridge



Electric Range



Dishwasher



OTR Microwave

