

Quick  
Possession

Weston  
AT EDMONTON

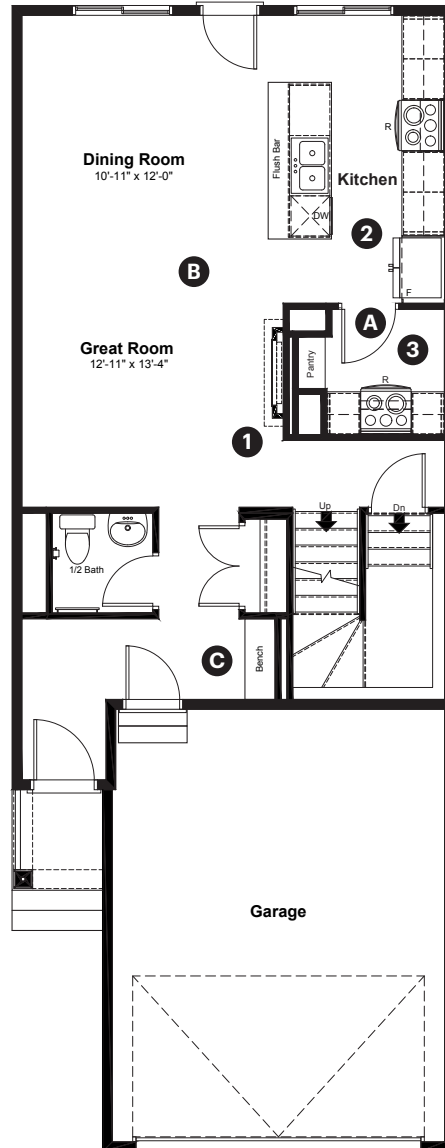
2422 Egret Loop NW  
Edmonton, AB

1,825 sq ft  
3 bedrooms  
2.5 bathrooms

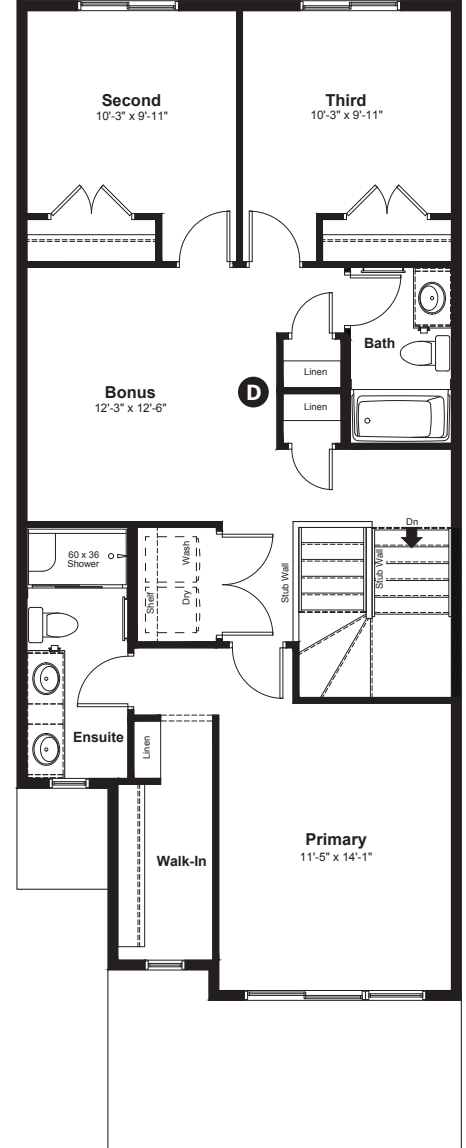
Prairie  
Elevation

Anthem

Main Floor: 791 sq ft



Upper Floor: 1,034 sq ft



#### Quick Possession Home Options

- 1 Electric fireplace with mantel
- 2 Level 2 kitchen cabinet layout
- 3 Working kitchen option

#### Quick Possession Home Highlights

- A Large pantry
- B 9' high main floor ceilings
- C Built-in bench
- D Double linen closets

Dimensions, sizes, specifications, layouts and materials are approximate only and subject to change without notice. The builder reserves the right to make change and modifications to the information contained herein. E.&O.E.

Front Drive 200

*Weston*  
AT EDMONTON

**2422 Egret Loop NW  
Edmonton, AB**

1,825 sq ft  
3 bedrooms  
2.5 bathrooms

Prairie  
Elevation



## Features

### Anthem Construction Standards

- Low maintenance architectural asphalt shingles
- Anthem maximizes window coverage on every home to provide your home with natural light. Windows are also triple plane low-E argon filled windows above grade
- Includes a 50-gallon gas water tank and 96% high-efficient gas furnace with dual-stage with variable speeds. It also has an integrated HRV system with dedicated pick-up locations in each bathroom with timers for easy use
- Decora type switches throughout the home
- R-50 blown insulation in all attic spaces
- Rough-in waterline to the fridge

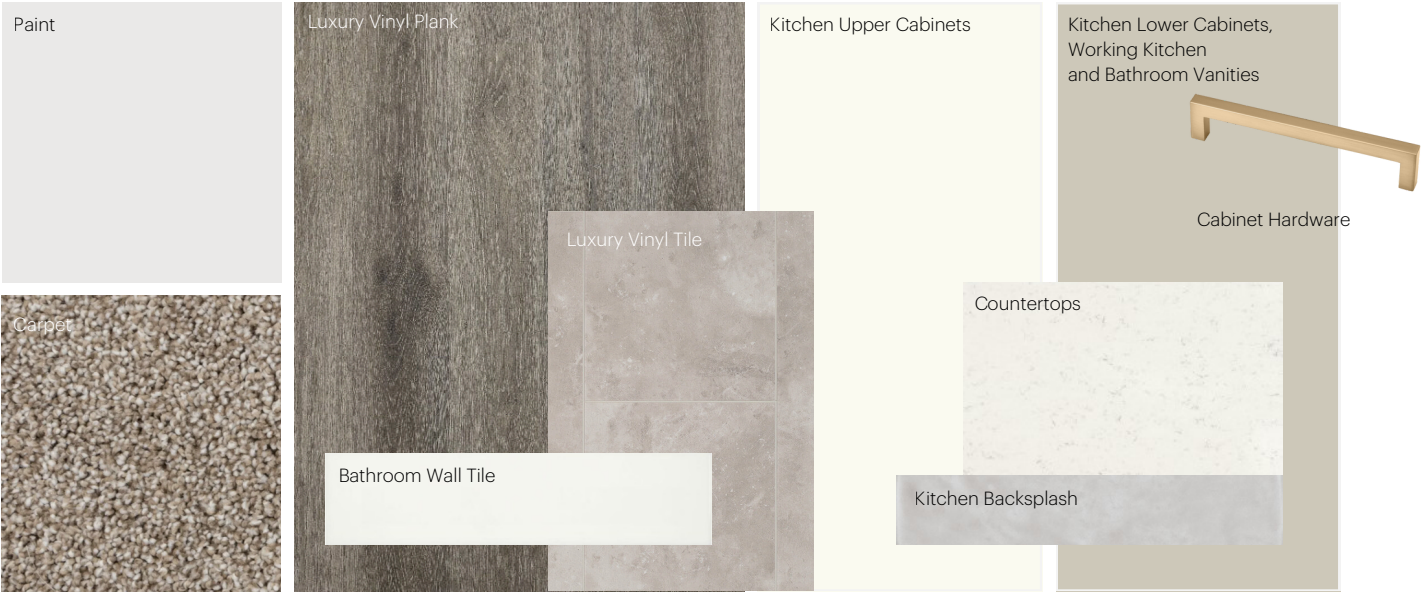
### The Interior

- Ceilings are finished with a splatter texture
- Luxury vinyl plank flooring on main floor
- Elevated level luxury vinyl tile flooring in upper bathrooms and laundry
- Carpet on finished stairs and upstairs with an 8lb underlay
- Secondary cabinet color
- Elevated level 3CM quartz countertops in kitchen, working kitchen and bathrooms
- Elevated level backsplash selection in kitchen and working kitchen
- Elevated level kitchen faucet
- Undermount silgranit kitchen sink
- Undermount bathroom sinks
- Elevated level interior door hardware package
- Stainless steel appliance package including a chimney hoodfan and built in microwave

# Anthem Home Palette Selections

**Model:** Front Drive 110
 **Address:** 2422 Egret Loop, Edmonton AB

## Cabinets, Flooring and Countertops



## Plumbing



## Finishing



# Anthem Home Palette Selections

**Model:** Front Drive 110
 **Address:** 2422 Egret Loop, Edmonton AB

## Lighting



Dining Room



Island Pendant



Stairwell



Bathrooms

\*Number of lights determined by size of vanity

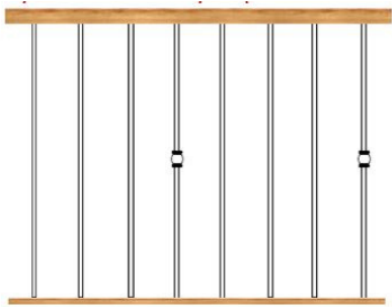


Halls / Closets




Bedrooms

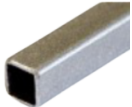
## Railing




Spindle Pattern




Handrail



Iron Color



Post Cap



Post

\* Handrail, post and cap painted to match the trim color

## Appliances



Fridge



Chimney Hoodfan  
Main Kitchen



Range Hoodfan  
Working Kitchen



Electric Range  
Main & Working Kitchen



Dishwasher



Microwave

