

Quick
Possession

Weston
AT EDMONTON

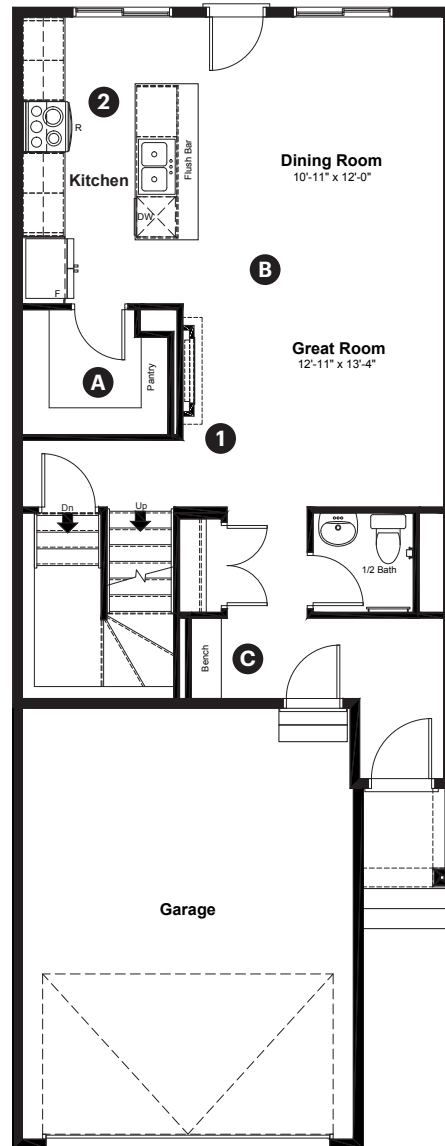
2420 Egret Loop NW
Edmonton, AB

1,825 sq ft
3 bedrooms
2.5 bathrooms

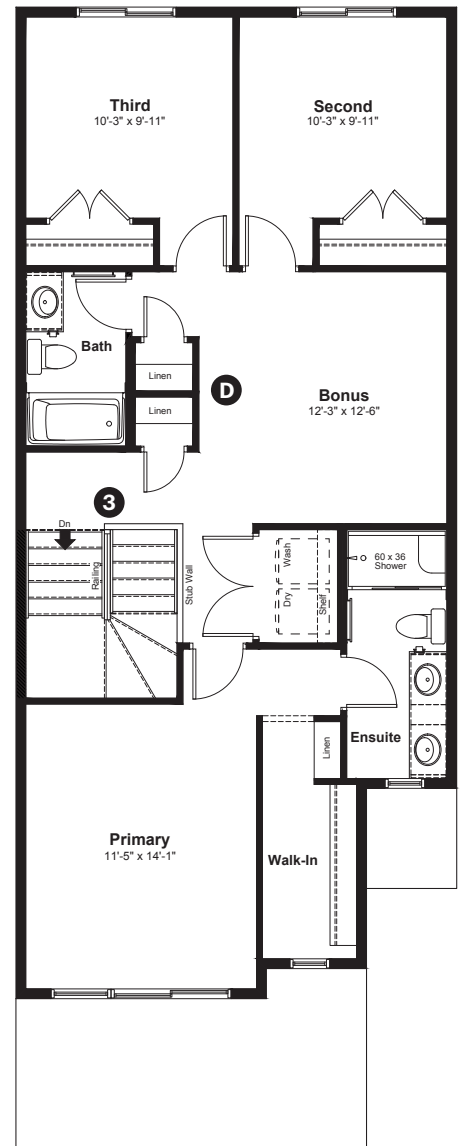
Prairie
Elevation

Anthem

Main Floor: 791 sq ft



Upper Floor: 1,034 sq ft



Quick Possession Home Options

- 1 Electric fireplace
- 2 Level 2 kitchen cabinet layout
- 3 Main floor railing

Quick Possession Home Highlights

- A Large pantry
- B 9' high main floor ceilings
- C Built-in bench
- D Double linen closets

Dimensions, sizes, specifications, layouts and materials are approximate only and subject to change without notice. The builder reserves the right to make change and modifications to the information contained herein. E.&O.E.

Front Drive 200

Weston
AT EDMONTON

**2420 Egret Loop NW
Edmonton, AB**

1,825 sq ft
3 bedrooms
2.5 bathrooms

Prairie
Elevation



Features

Anthem Construction Standards

- Low maintenance architectural asphalt shingles
- Anthem maximizes window coverage on every home to provide your home with natural light. Windows are also triple plane low-E argon filled windows above grade
- Includes a 50-gallon gas water tank and 96% high-efficient gas furnace with dual-stage with variable speeds. It also has an integrated HRV system with dedicated pick-up locations in each bathroom with timers for easy use
- Decora type switches throughout the home
- R-50 blown insulation in all attic spaces
- Rough-in waterline to the fridge

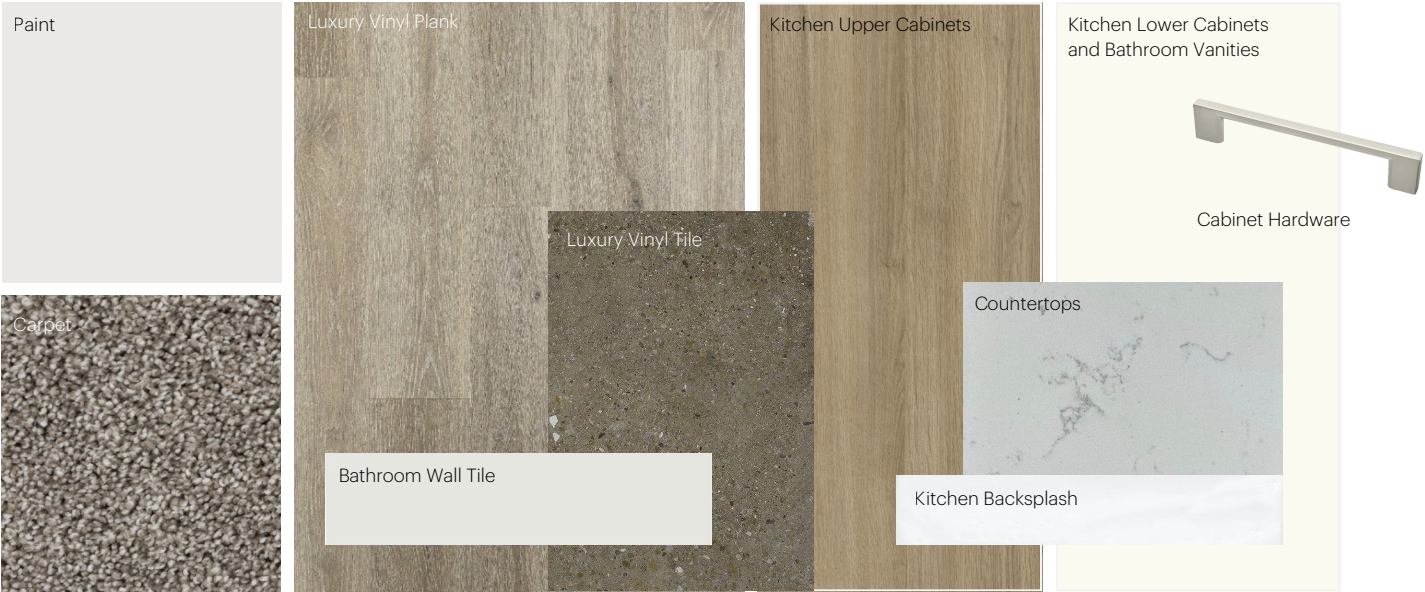
The Interior

- Ceilings are finished with a splatter texture
- Luxury vinyl plank flooring on main floor
- Luxury vinyl tile flooring in upper bathrooms and laundry
- Carpet on finished stairs and upstairs with an 8lb underlay
- Secondary cabinet color
- Elevated level 3CM quartz countertops in kitchen and bathrooms
- Elevated level kitchen backsplash selection
- Undermount stainless steel kitchen
- Undermount bathroom sinks
- Elevated level interior door hardware package
- Elevated level bathroom plumbing fixtures and pottery package
- Stainless steel appliance package including a chimney hoodfan and built in microwave

Anthem Home Palette Selections

Model: Front Drive 200 **Address:** 2420 Egret Loop, Edmonton AB

Cabinets, Flooring and Countertops



Plumbing



Finishing



Anthem Home Palette Selections

Model: Front Drive 200 **Address:** 2420 Egret Loop, Edmonton AB

Lighting



Dining Room



Island Pendants



Stairwell



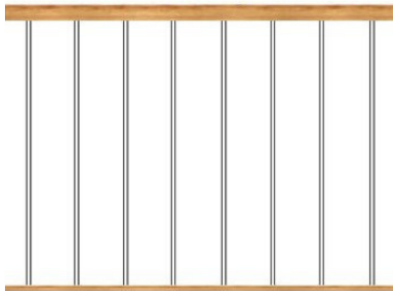
Bathrooms

*Number of lights determined by size of vanity



Bedrooms

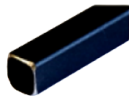
Railing



Spindle Pattern



Handrail



Iron Color

Post Cap



Post

* Handrail, post and cap painted to match the trim color

Appliances



Fridge



Chimney Hoodfan



Electric Range



Dishwasher



Microwave

