

Quick
Possession

Weston
AT EDMONTON

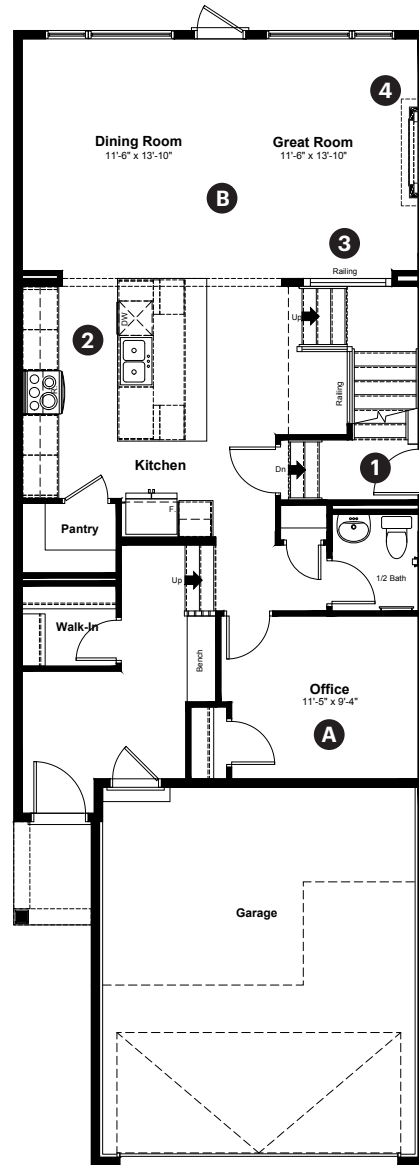
2353 Egret Way NW
Edmonton, AB

2,284 sq ft
3 bedrooms
2.5 bathrooms

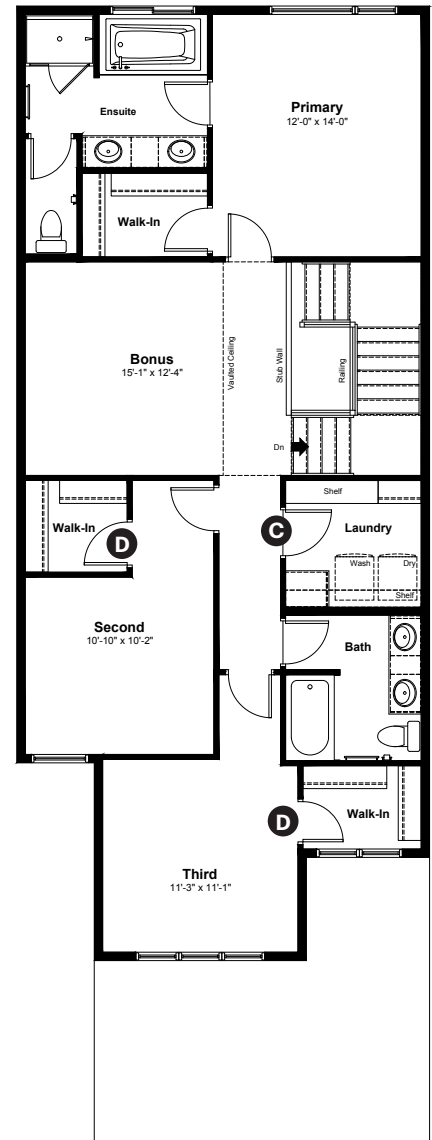
Prairie
Elevation

Anthem

Main Floor: 1,066 sq ft



Upper Floor: 1,218 sq ft



Quick Possession Home Options

- 1 Side entrance
- 2 Level 2 kitchen cabinet layout
- 3 Main floor railing
- 4 Electric fireplace with mantle

Quick Possession Home Highlights

- A Main floor office
- B 9' high main floor ceilings
- C Spacious laundry room
- D Walk-in closets in secondary bedrooms

Dimensions, sizes, specifications, layouts and materials are approximate only and subject to change without notice. The builder reserves the right to make change and modifications to the information contained herein. E.&O.E.

Front Drive 120

Weston
AT EDMONTON

**2353 Egret Way NW
Edmonton, AB**

2,284 sq ft
3 bedrooms
2.5 bathrooms

Prairie
Elevation



Features

Anthem Construction Standards

- Low maintenance architectural asphalt shingles
- Anthem maximizes window coverage on every home to provide your home with natural light
- Windows are also triple plane low-E argon filled windows above grade
- Includes a 50 gallon gas water tank and 96% high-efficient gas furnace with dual-stage with variable speeds. It also has an integrated HRV system with dedicated pick up locations in each bathroom with timers for easy use
- Decora type switches throughout the home
- R-50 blown insulation in all attic spaces
- Rough-in waterline to fridge

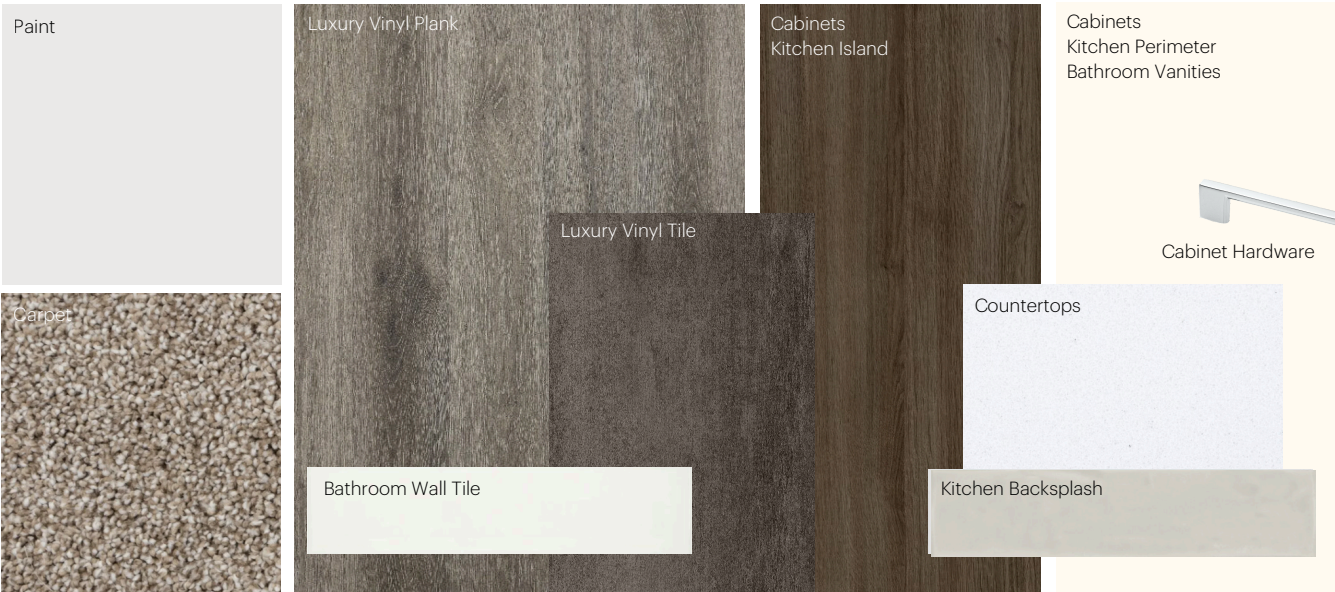
The Interior

- Ceilings are finished with a splatter texture
- Luxury vinyl plank flooring on main floor
- Luxury vinyl tile flooring in upper bathrooms and laundry
- Carpet on finished stairs and upstairs with an 8lb underlay
- Elevated level quartz countertops in kitchen, bathrooms and laundry room
- Elevated level kitchen backsplash selection
- Secondary cabinet color
- Undermount stainless steel kitchen
- Undermount bathroom sinks
- Elevated level interior door hardware package
- Stainless steel appliance package including a chimney hoodfan and built in microwave

Anthem Home Palette Selections

Model: Front Drive 120
 Address: 2353 Egret Way NW, Edmonton AB

Cabinets, Flooring and Countertops



Plumbing



Finishing



Anthem Home Palette Selections

Model: Front Drive 120 **Address:** 2353 Egret Way NW, Edmonton AB

Lighting



Dining Room



Island Pendant



Stairwell



Bedrooms




Halls / Closets



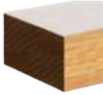
Bathrooms

*Number of lights determined by size of vanity

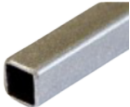
Railing




Spindle Pattern



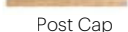
Handrail



Iron Color



Post



Post Cap

* Handrail, post and cap painted to match the trim color

Appliances



Fridge



Chimney Hoodfan



Stove



Built in microwave



Dishwasher

