

Quick  
Possession



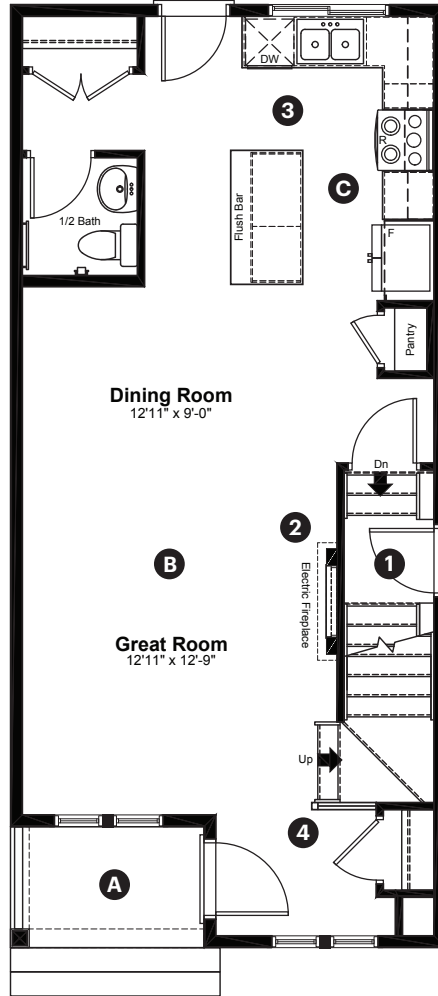
**Kinglet**  
BY BIG LAKE

3890 Wren  
Crescent NW  
Edmonton, AB

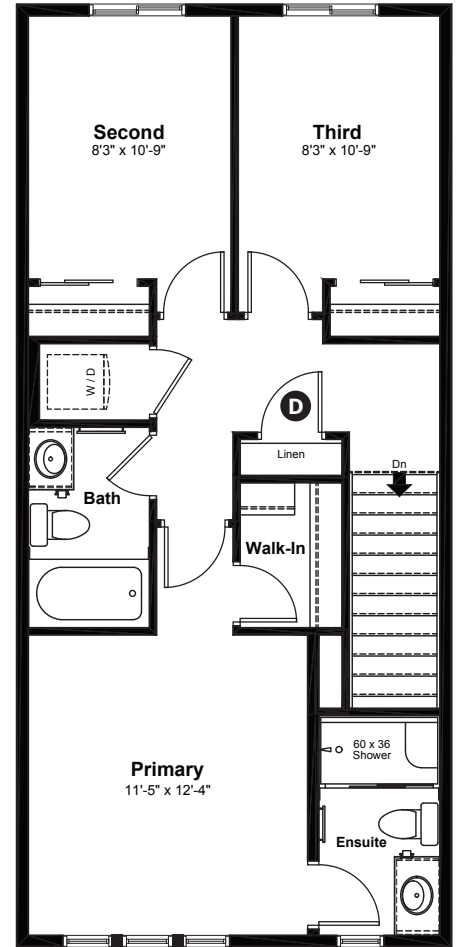
1,364 sq ft  
3 bedrooms  
2.5 bathrooms

Prairie Elevation

Main Floor: 662 sq ft



Upper Floor: 720 sq ft



#### Quick Possession Home Options

- 1 Side entrance
- 2 Electric fireplace
- 3 Level 2 kitchen cabinet layout
- 4 Main floor railing

#### Quick Possession Home Highlights

- A Front porch
- B 9' high main floor ceilings
- C Rear kitchen
- D Upstairs linen closet

Dimensions, sizes, specifications, layouts and materials are approximate only and subject to change without notice. The builder reserves the right to make change and modifications to the information contained herein. E.&O.E.

Laned 150

Quick  
Possession

Anthem 

Kinglet  
BY BIG LAKE

3890 Wren  
Crescent NW  
Edmonton, AB

1,364 sq ft  
3 bedrooms  
2.5 bathrooms

Prairie Elevation



## Features

### Anthem Construction Standards

- Low maintenance architectural asphalt shingles
- Anthem maximizes window coverage on every home to provide your home with natural light. Windows are also triple plane low-E argon filled windows above grade
- Includes a 50-gallon gas water tank and 96% high-efficient gas furnace with dual-stage with variable speeds. It also has an integrated HRV system with dedicated pick-up locations in each bathroom with timers for easy use
- Decora type switches throughout home
- R-50 blown insulation in all attic spaces
- Rough-in waterline to the fridge

### The Interior

- Ceilings are finished with a knockdown ceiling texture
- Luxury vinyl plank flooring on main floor
- Luxury vinyl tile flooring in upper bathrooms and laundry
- Carpet on finished stairs and upstairs with an 8lb underlay
- Secondary cabinet color
- 2 CM quartz countertops in kitchen and bathrooms
- Undermount stainless steel kitchen sink
- Stainless steel appliance package
- Upgraded dining light fixture
- Undermount bathroom sinks in main and ensuite bathrooms
- Upgraded 150 amp electrical panel

Laned 150

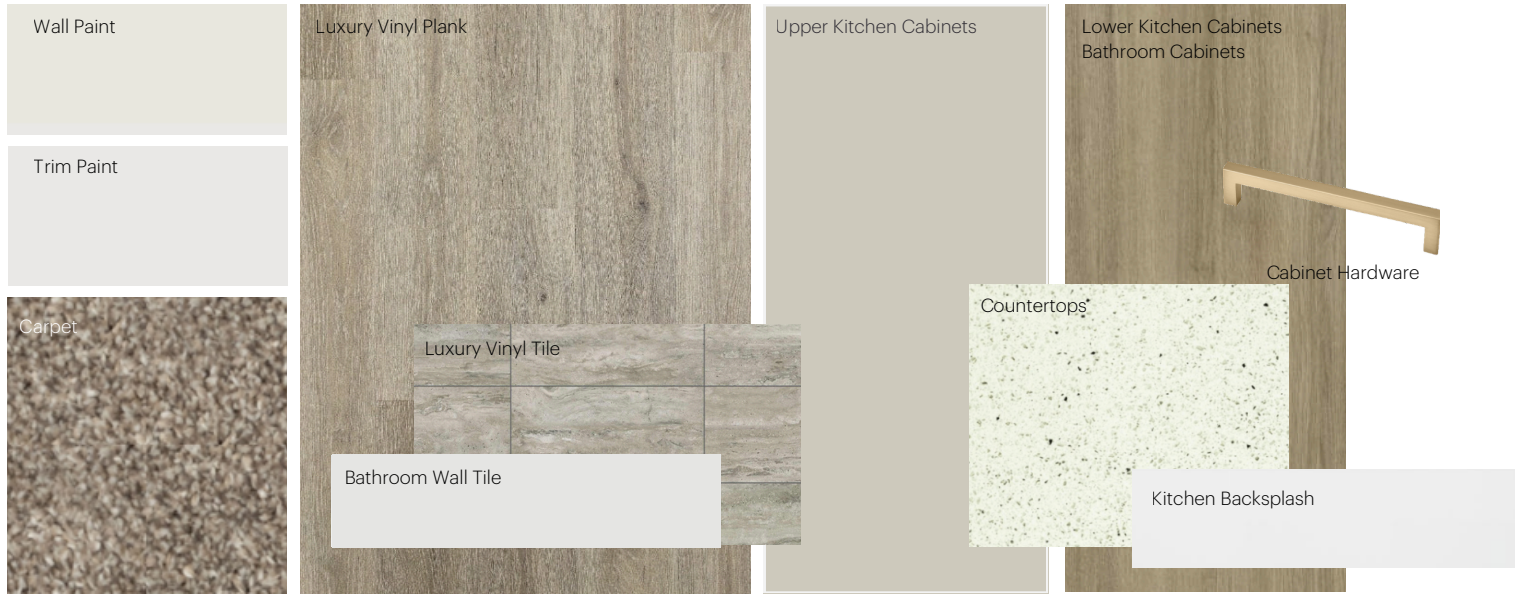
Dimensions, sizes, specifications, layouts and materials are approximate only and subject to change without notice. The builder reserves the right to make change and modifications to the information contained herein. E.&O.E.

# Anthem Home Palette Selections

**Model:** Laned 150

**Address:** 3890 Wren Crescent NW, Edmonton AB

## Cabinets, Flooring and Countertops



## Plumbing



Kitchen Sink



Kitchen Faucet



Pedestal Sink  
\*faucet shown is not included



Bathroom Sink



Bathroom Faucet



Tub / Shower Faucet

## Finishing



Interior Door Knob



Bathroom Accessories



Interior Doors



# Anthem Home Palette Selections

**Model:** Laned 150

**Address:** 3890 Wren Crescent NW, Edmonton AB

## Lighting



Dining Room



Island Pendant



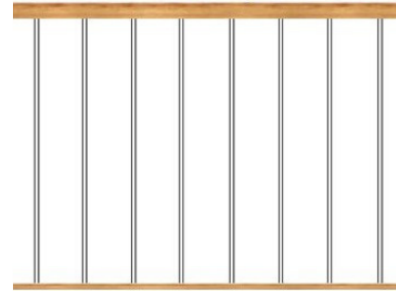
Bathrooms

\*Number of lights determined by size of vanity



Bedrooms

## Railing



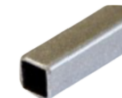
Spindle Pattern



Post Cap



Handrail



Iron Color

Post

\* Handrail, post and cap painted to match the trim color

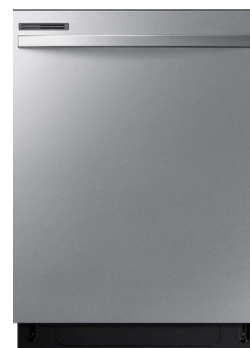
## Appliances



Fridge



Electric Range



Dishwasher



OTR Microwave

