

Quick
Possession

Kinglet
BY BIG LAKE

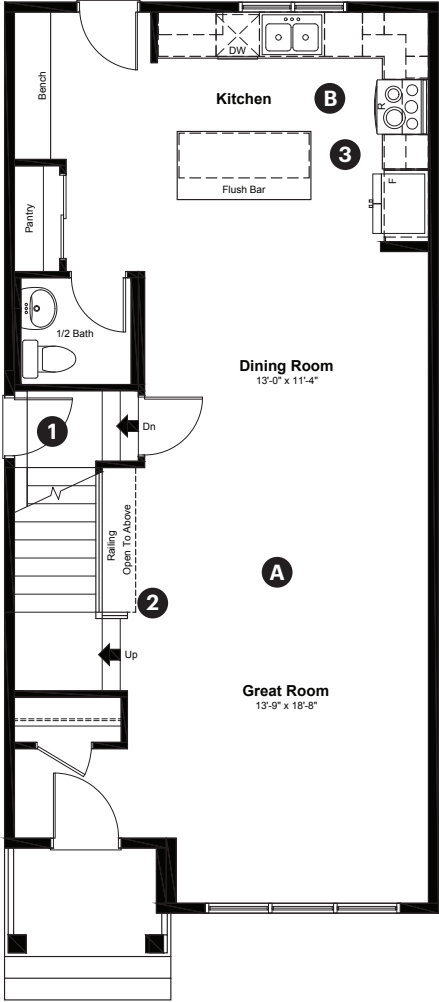
3957 Wren Loop NW
Edmonton, AB

1,647 sq ft
3 bedrooms
2.5 bathrooms

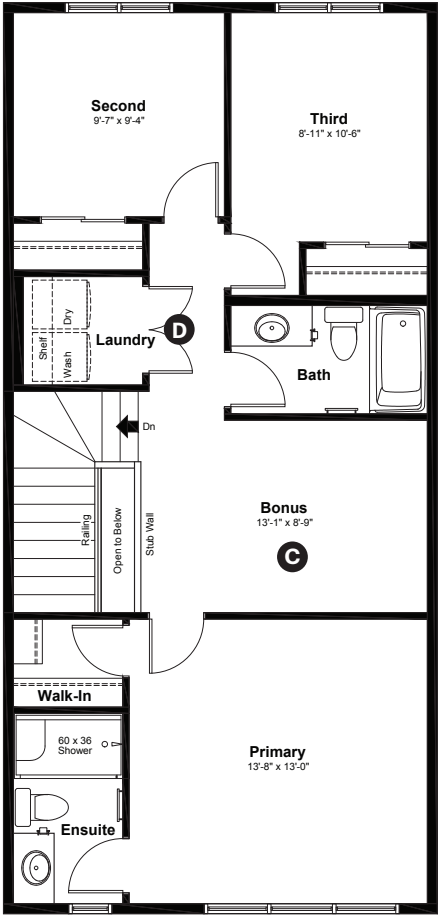
Prairie Elevation



Main Floor: 819 sq ft



Upper Floor: 828 sq ft



Quick Possession Home Options

- 1 Side entry
- 2 Main floor railing
- 3 Level 2 kitchen cabinet layout

Quick Possession Home Highlights

- A 9' high main floor ceilings
- B Rear kitchen
- C Central bonus room
- D Spacious laundry room

Laned 110

Dimensions, sizes, specifications, layouts and materials are approximate only and subject to change without notice. The builder reserves the right to make change and modifications to the information contained herein. E.&O.E.

Quick
Possession

Kinglet
BY BIG LAKE

**3957 Wren Loop NW
Edmonton, AB**

1,647 sq ft
3 bedrooms
2.5 bathrooms

Prairie Elevation

Anthem



Artists interpretation only. May not reflect actual colors.

Prairie

Features

Anthem Construction Standards

- Low maintenance, 30-year architectural asphalt shingles
- Anthem maximizes window coverage on every home to provide your home with natural light
- Windows are also triple plane low-E argon filled windows above grade
- Includes an 80 gallon gas water tank and 96% high-efficient gas furnace with dual-stage with variable speeds. It also has an integrated HRV system with dedicated pick up locations in each bathroom with timers for easy use
- Decora type switches throughout the home
- R-50 blown insulation in all attic spaces
- Rough-in waterline to the fridge

The Interior

- Ceilings are finished with a splatter texture
- Luxury vinyl plank flooring on main floor
- Luxury vinyl tile flooring in upper bathrooms and laundry
- Carpet on finished stairs and upstairs with an 8lb underlay
- Quartz countertops in kitchen and bathrooms
- Undermount stainless steel kitchen sink
- Undermount bathroom sinks
- Stainless steel appliance package
- 9' high foundation

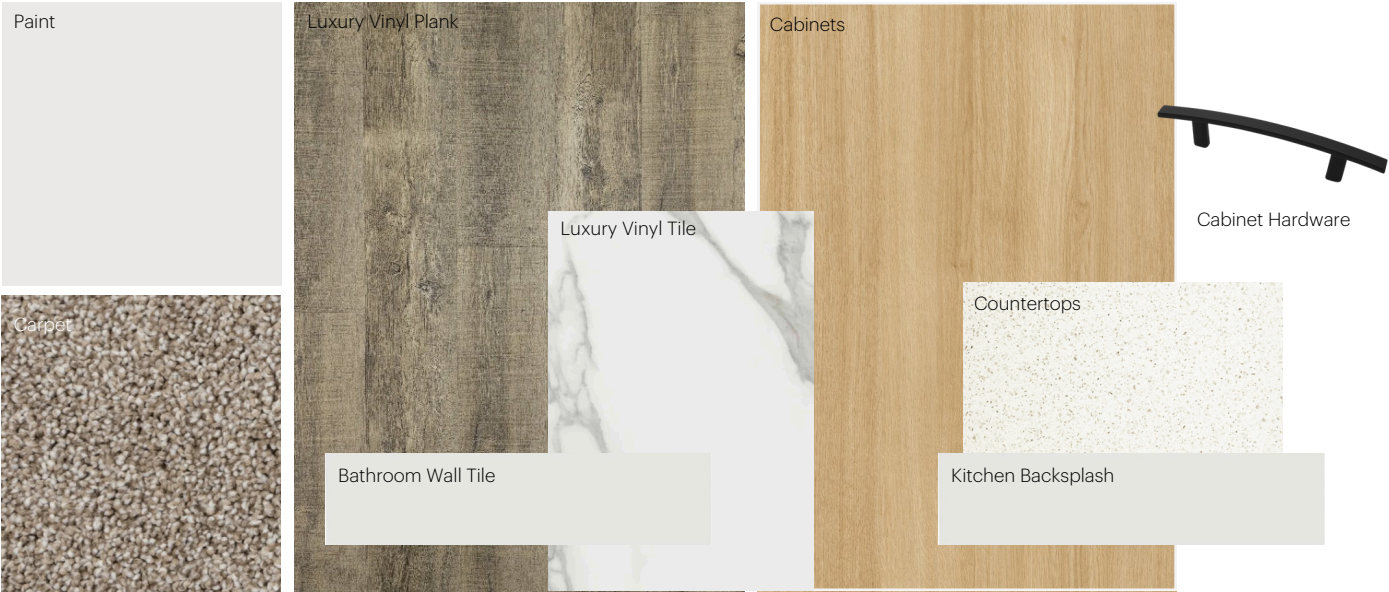
Dimensions, sizes, specifications, layouts and materials are approximate only and subject to change without notice. The builder reserves the right to make change and modifications to the information contained herein. E.&O.E.

Laned 110

Anthem Home Palette Selections

Model: Laned 110
 Address: 3957 Wren Loop NW, Edmonton AB

Cabinets, Flooring and Countertops



Plumbing



Finishing



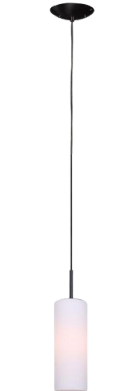
Anthem Home Palette Selections

Model: Laned 110
 Address: 3957 Wren Loop NW, Edmonton AB

Lighting



Dining Room



Island Pendants

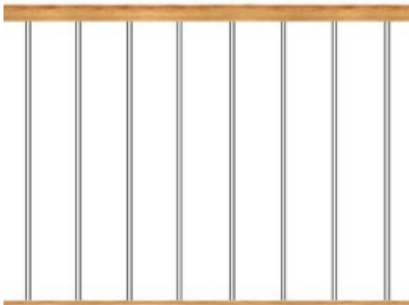


Bathrooms
*Number of lights determined by size of vanity

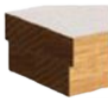


Bedrooms

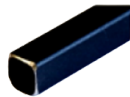
Railing



Spindle Pattern



Handrail



Iron Color



Post

* Handrail, post and cap painted to match the trim color

Appliances



Fridge



Microwave Hoodfan



Stove



Dishwasher

