

Quick
Possession

Anthem

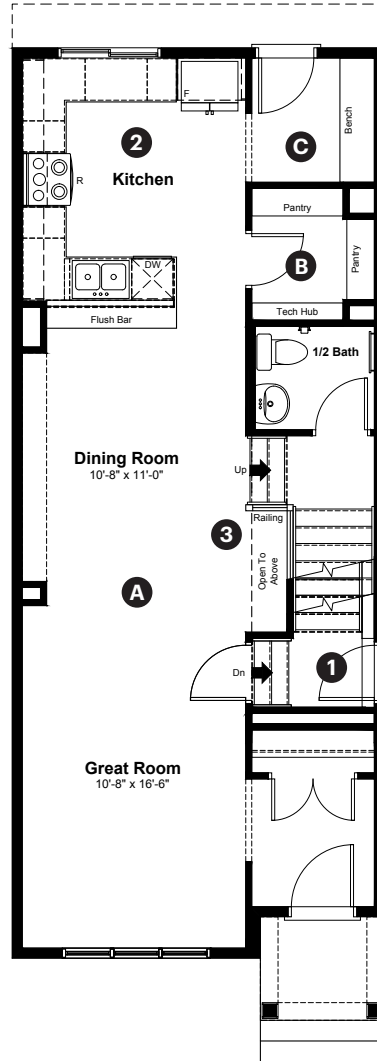
Kinglet
BY BIG LAKE

3894 Wren Crescent
Edmonton, AB

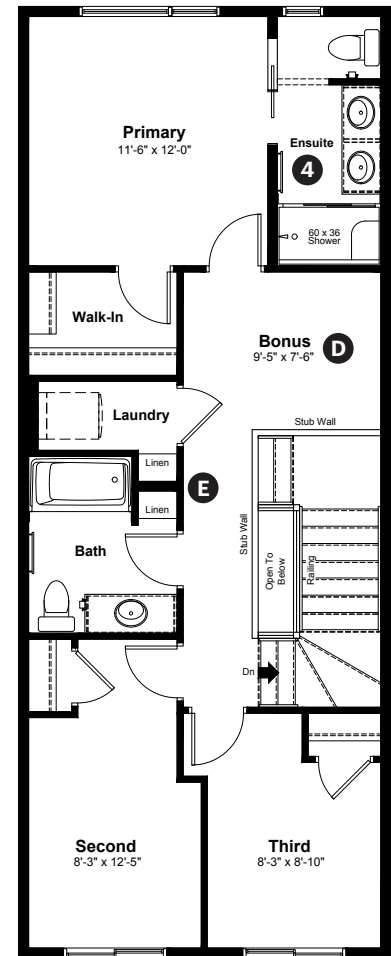
1,598 sq ft
3 bedrooms
2.5 bathrooms

Prairie Elevation

Main Floor: 780 sq ft



Upper Floor: 818 sq ft



Quick Possession Home Options

- 1 Side entrance
- 2 Level 2 kitchen cabinet layout
- 3 Main floor railing
- 4 Dual sinks in ensuite bathroom

Quick Possession Home Highlights

- A 9' high main floor ceilings
- B Spacious pantry
- C Built in bench
- D Upstairs bonus room
- E Dual linen storage

Dimensions, sizes, specifications, layouts and materials are approximate only and subject to change without notice. The builder reserves the right to make change and modifications to the information contained herein. E.&O.E.

Laned 180

Quick
Possession

Anthem 

Kinglet
BY BIG LAKE

3894 Wren Crescent
Edmonton, AB

1,598 sq ft
3 bedrooms
2.5 bathrooms

Prairie Elevation



Features

Anthem Construction Standards

- Low maintenance architectural asphalt shingles
- Anthem maximizes window coverage on every home to provide your home with natural light . Windows are also triple plane low-E argon filled windows above grade
- Includes an 50-gallon gas hot water tank and 96% high-efficient gas furnace with dual-stage with variable speeds. It also has an integrated HRV system with dedicated pick-up locations in each bathroom with timers for easy use
- Decora type switches throughout the home
- R-50 blown insulation in all attic spaces
- Rough-in waterline to the fridge

The Interior

- Ceilings are finished with a splatter texture
- Luxury vinyl plank flooring on main floor
- Luxury vinyl tile flooring in upper bathrooms and laundry
- Carpet on finished stairs and upstairs with an 8lb underlay
- 2 CM quartz countertops in the kitchen and bathrooms
- Stainless steel undermount kitchen sink
- Undermount bathroom sinks
- Upgraded light fixture in dining area
- Stainless steel appliance package
- Iron railing on main floor stairwell
- Upgraded 150 amp electrical panel
- 9' high basement foundation

Dimensions, sizes, specifications, layouts and materials are approximate only and subject to change without notice. The builder reserves the right to make change and modifications to the information contained herein. E.&O.E.

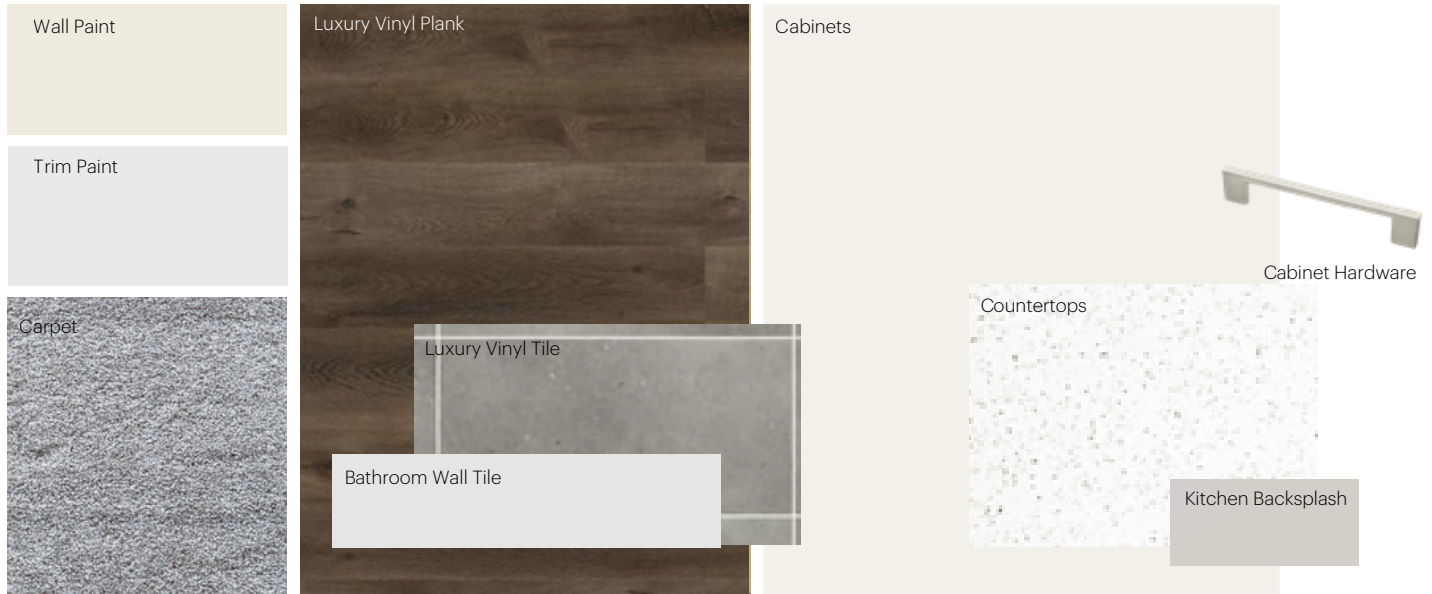
Laned 180

Anthem Home Palette Selections

Model: Laned 180

Address: 3894 Wren Crescent NW, Edmonton AB

Cabinets, Flooring and Countertops



Plumbing



Kitchen Sink



Kitchen Faucet



Pedestal Sink
*faucet shown is not included



Bathroom Sink



Bathroom Faucet



Tub / Shower Faucet

Finishing



Interior Door knob



Bathroom Accessories



Interior Doors



Anthem Home Palette Selections

Model: Laned 180

Address: 3894 Wren Crescent NW, Edmonton AB

Lighting



Dining Room



Island Pendant



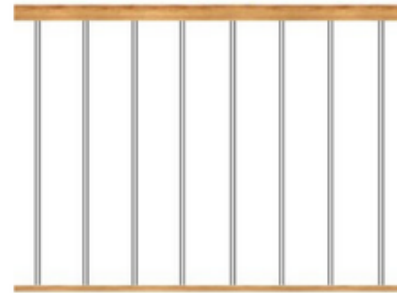
Bathrooms

*Number of lights determined by size of vanity



Bedrooms

Railing



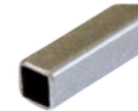
Spindle Pattern



Post Cap



Handrail



Iron Color

Post

* Handrail, post and cap painted to match the trim color

Appliances



Fridge



Electric Range



Dishwasher



OTR Microwave

