

Quick
Possession

GLENRIDDING
RAVINE

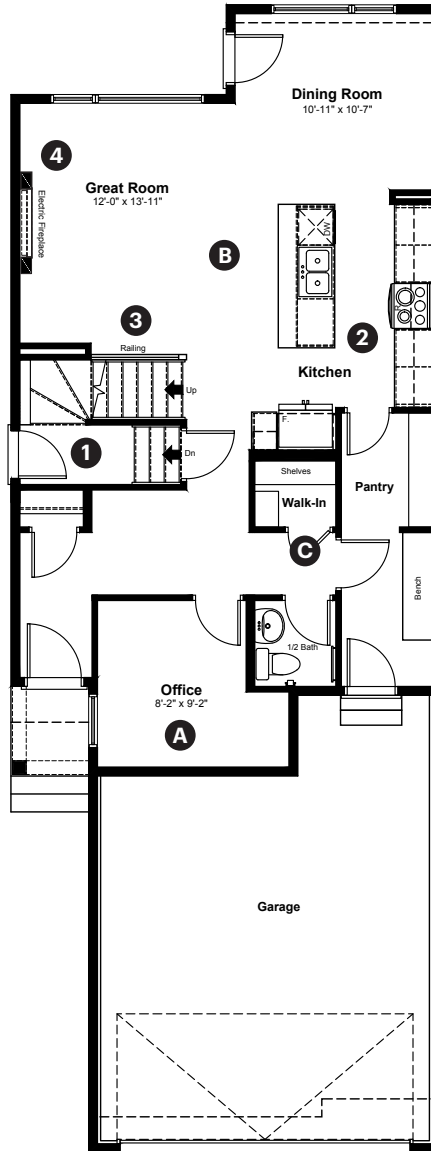
15863 27 Avenue SW
Edmonton, AB

2,228 sq ft
4 bedrooms
2.5 bathrooms

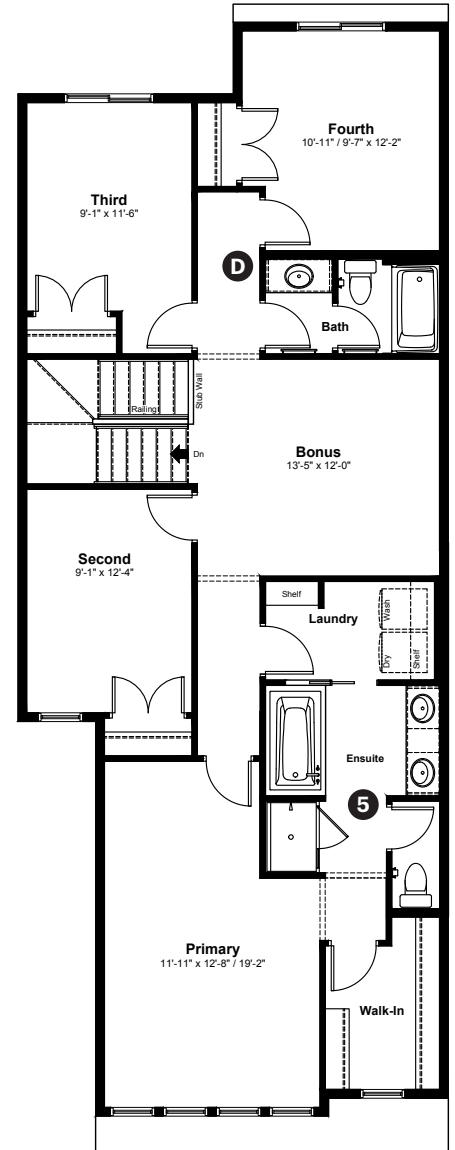
Modern Prairie
Elevation

Anthem

Main Floor: 914 sq ft



Upper Floor: 1,314 sq ft



Quick Possession Home Options

- 1 Side entrance
- 2 Level 2 kitchen cabinet layout
- 3 Main floor spindle railing
- 4 Electric Fireplace with tile to mantle
- 5 Primary ensuite option 1

Quick Possession Home Highlights

- A Main floor office with a window
- B 9' high main floor ceilings
- C Oversized main floor closet
- D Four bedrooms upstairs

Dimensions, sizes, specifications, layouts and materials are approximate only and subject to change without notice. The builder reserves the right to make change and modifications to the information contained herein. E.&O.E.

Front Drive 113

Quick
Possession



15863 27 Avenue SW
Edmonton, AB

2,228 sq ft
4 bedrooms
2.5 bathrooms

Modern Prairie
Elevation



Artists interpretation only. May not reflect actual colours.

Modern Prairie

Features

Anthem Construction Standards

- Low maintenance architectural asphalt shingles
- Anthem maximizes window coverage on every home to provide your home with natural light.
- Windows are also triple plane low-E argon filled windows above grade
- Includes a 50-gallon gas water tank and 96% high-efficient gas furnace with dual-stage with variable speeds. It also has an integrated HRV system with dedicated pick-up locations in each bathroom with timers for easy use
- Decora type switches throughout the home
- R-50 blown insulation in all attic spaces
- Rough-in waterline to the fridge

The Interior

- Ceilings are finished with a splatter texture
- Luxury vinyl plank flooring on main floor
- Executive level luxury vinyl tile flooring in upper bathrooms and laundry
- Carpet on finished stairs and upstairs with an 8lb underlay
- Elevated level quartz countertops in kitchen and bathrooms
- Elevated level kitchen backsplash selection
- Secondary cabinet color
- Undermount stainless steel kitchen
- Undermount bathroom sinks
- Executive level interior door hardware package
- Stainless steel appliance package including a chimney hoodfan and built in microwave
- Black matte lighting package with upgraded pendant lights over the island and upgraded chandelier in dining area
- Gas line added to kitchen

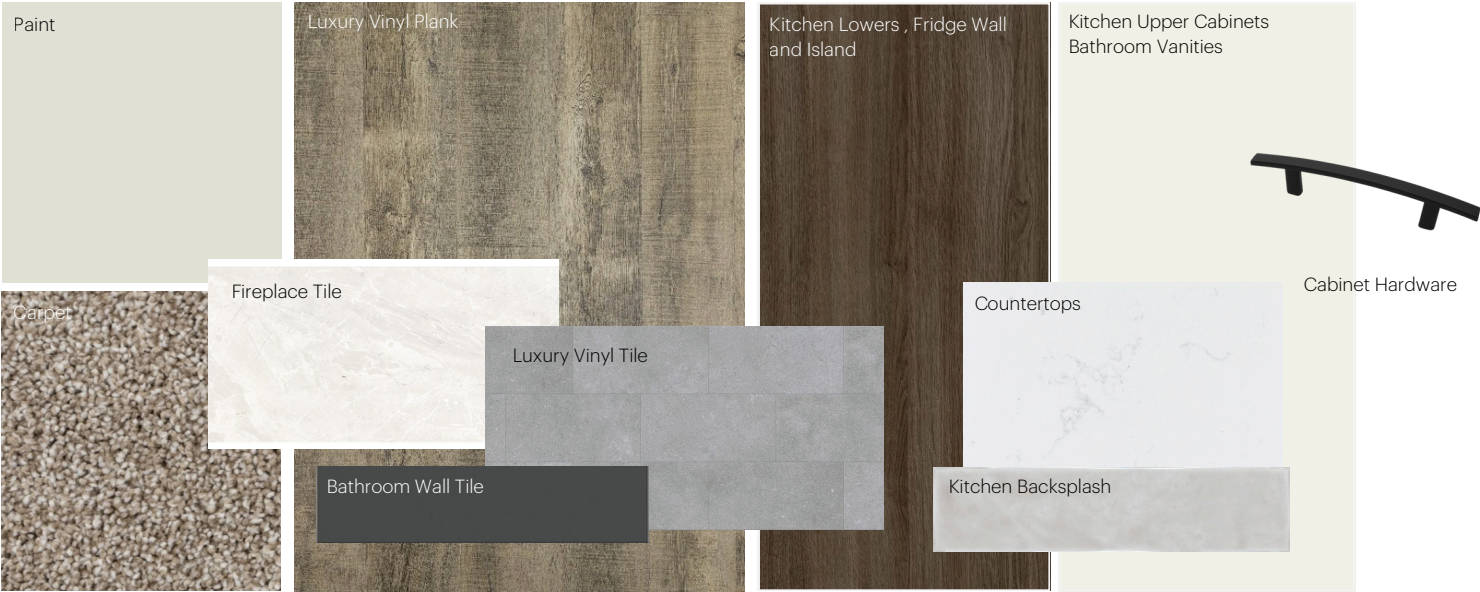
Dimensions, sizes, specifications, layouts and materials are approximate only and subject to change without notice. The builder reserves the right to make change and modifications to the information contained herein. E.&O.E.

Front Drive 113

Anthem Home Palette Selections

Model: Front Drive 113
 Address: 15863 27 Avenue, Edmonton AB

Cabinets, Flooring and Countertops



Plumbing



Finishing



Anthem Home Palette Selections

Model: Front Drive 113
 Address: 15863 27 Avenue, Edmonton AB

Lighting



Dining Room



Island Pendant



Stairwell



Halls / Closets



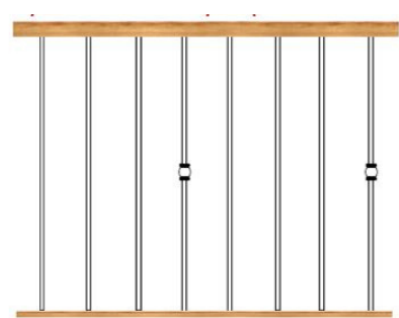
Bedrooms




Bathrooms

*Number of lights determined by size of vanity

Railing




Spindle Pattern



Handrail



Iron Color



Post Cap

Post

Appliances



Fridge



Chimney Hoodfan



Built in microwave



Stove



Dishwasher

