

Quick Possession



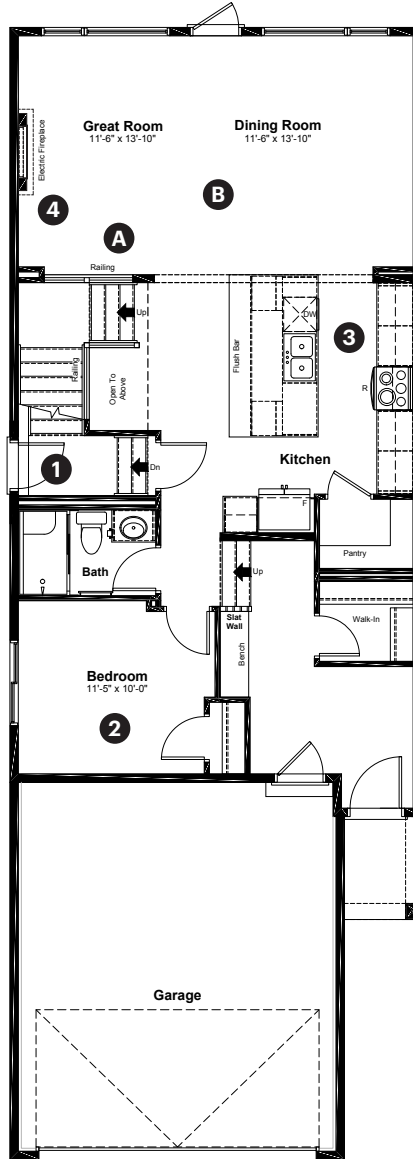
198 Annette Landing  
Calgary, AB

2,284 sq ft  
4 bedrooms  
4 bathrooms

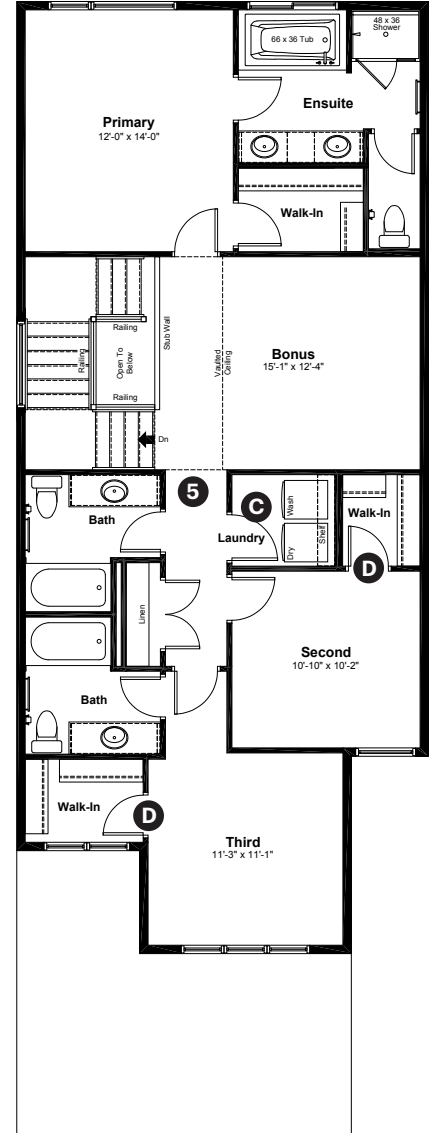
Craftsman Elevation

Front Drive 120

Main Floor: 1,066 sq ft



Upper Floor: 1,218 sq ft



#### Quick Possession Home Options

- 1 Side entrance
- 2 Main floor bedroom and full bathroom
- 3 Level 2 kitchen cabinet layout
- 4 Electric fireplace
- 5 Upper floor option 1

#### Quick Possession Home Highlights

- A Main floor railing
- B 9' high main floor ceilings
- C Spacious laundry room
- D Walk-in closets in secondary bedrooms

Dimensions, sizes, specifications, layouts and materials are approximate only and subject to change without notice. The builder reserves the right to make change and modifications to the information contained herein. E.&O.E.

Quick  
Possession

**Anthem** 

 **GLACIER  
RIDGE**

**198 Annette Landing  
Calgary, AB**

2,284 sq ft  
4 bedrooms  
4 bathrooms

Craftsman Elevation



## Features

### Anthem Construction Standards

- Low maintenance architectural asphalt shingles
- Anthem maximizes window coverage on every home to provide your home with natural light. Windows are also triple plane low-E argon filled windows above grade
- Includes a 50-gallon gas water tank and 96% high-efficient gas furnace with dual-stage with variable speeds. It also has an integrated HRV system with dedicated pick-up locations in each bathroom with timers for easy use
- Decora type switches in the kitchen
- R-50 blown insulation in all attic spaces
- Rough-in waterline to fridge

### The Interior

- Ceilings are finished with a knockdown texture
- Luxury vinyl plank flooring on main floor
- Luxury vinyl tile flooring in upper bathrooms and laundry

- Carpet on finished stairs and upstairs with an 8lb underlay
- Secondary cabinet color
- 3 CM quartz countertops in kitchen and bathrooms
- Upgraded kitchen island brackets
- Upgraded undermount silgranit kitchen sink
- Upgraded kitchen faucet
- Undermount bathroom sinks
- Upgraded kitchen backsplash
- Stainless steel appliance package including a chimney hoodfan and built-in microwave
- 9' high basement foundation
- Gas line added for BBQ and kitchen range
- Additional windows added to side elevation
- Permanent soffit lighting
- Rough-in's added for future basement suite development

Dimensions, sizes, specifications, layouts and materials are approximate only and subject to change without notice. The builder reserves the right to make change and modifications to the information contained herein. E.&O.E.

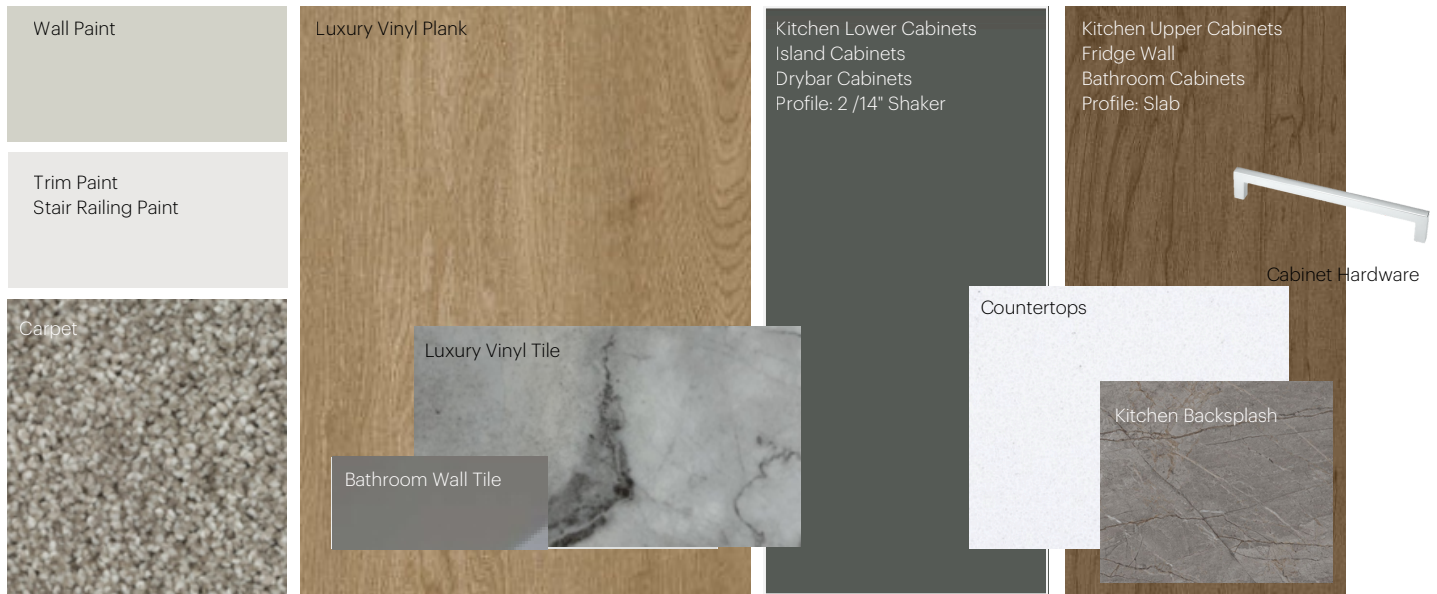
Front Drive 120

# Anthem Home Palette Selections

**Model:** Front Drive 120

**Address:** 198 Annette Landing, Calgary AB

## Cabinets, Flooring and Countertops



## Plumbing



Kitchen Sink



Bathroom Sink



Bathroom Faucet



Kitchen Faucet



Tub / Shower Faucet



## Finishing



Exterior  
Handleset



Interior Door  
Lever



Bathroom  
Accessories



Interior Doors



# Anthem Home Palette Selections

**Model:** Front Drive 120

**Address:** 198 Annette Landing, Calgary AB

## Lighting



Dining Room



Island Pendant



Stairwell



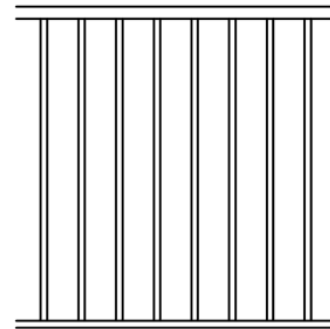
Bathrooms

\*Number of lights determined by size of vanity

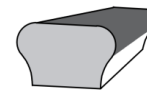


Bedrooms

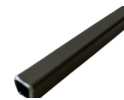
## Railing



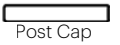
Spindle Pattern



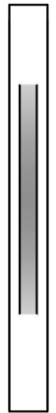
Handrail



Iron Color



Post Cap



Post

\* Handrail, post and cap painted to match the trim color

## Appliances



Fridge



Chimney Hoodfan



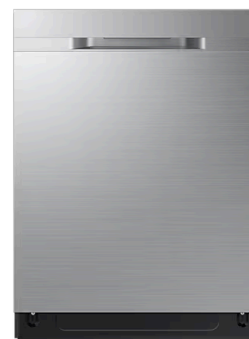
Electric Range



Washer



Dryer



Dishwasher



Microwave

