

Quick Possession

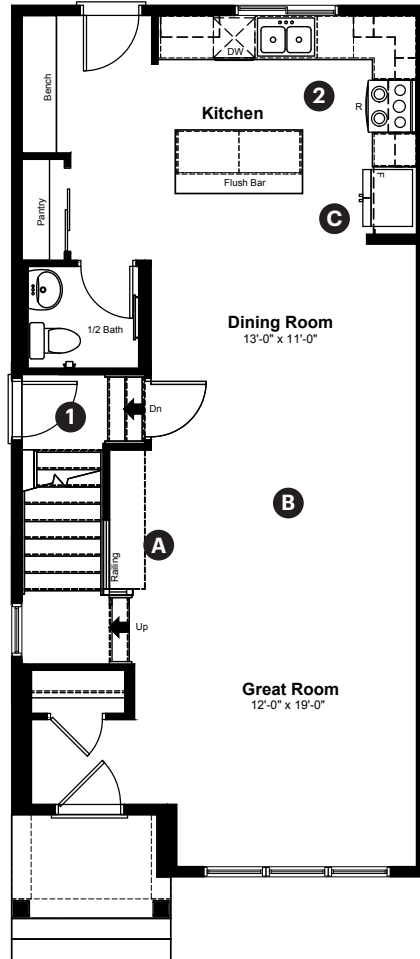


191 Annette Landing  
Calgary, AB

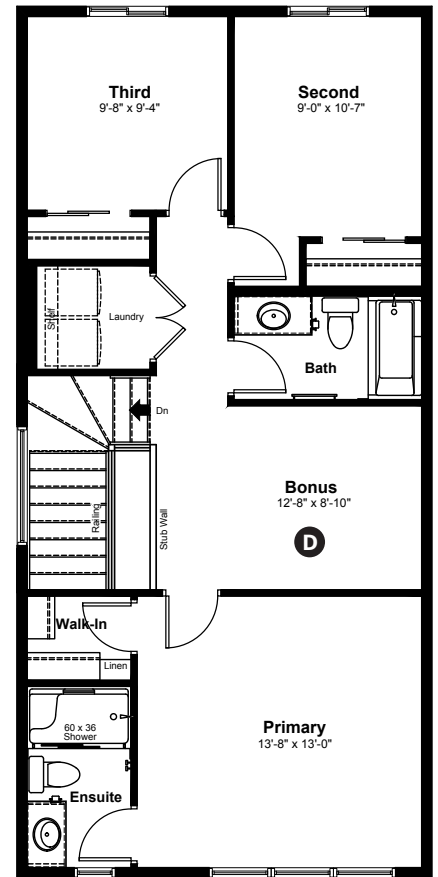
1,647 sq ft  
3 bedrooms  
2.5 bathrooms

Craftsman Elevation

Main Floor: 819 sq ft



Upper Floor: 828 sq ft



### Quick Possession Home Options

- 1 Side entrance
- 2 Level 3 kitchen cabinet layout

### Quick Possession Home Highlights

- A Main floor railing
- B 9' high main floor ceilings
- C Rear kitchen
- D Central bonus room

Laned 110

Quick  
Possession

Anthem 

 GLACIER  
RIDGE

191 Annette Landing  
Calgary, AB

1,647 sq ft  
3 bedrooms  
2.5 bathrooms

Craftsman Elevation



## Features

### Anthem Construction Standards

- Low maintenance architectural asphalt shingles
- Anthem maximizes window coverage on every home to provide your home with natural light. Windows are also triple plane low-E argon filled windows above grade
- Includes a 50-gallon gas water tank and 96% high-efficient gas furnace with dual-stage with variable speeds. It also has an integrated HRV system with dedicated pick-up locations in each bathroom with timers for easy use
- Decora type switches in the kitchen
- R-50 blown insulation in all attic spaces
- Rough-in waterline to the fridge

### The Interior

- Ceilings are finished with a knockdown ceiling texture
- Luxury vinyl plank flooring on main floor
- Upgrade luxury vinyl tile flooring in upper bathrooms and laundry
- Carpet on finished stairs and upstairs with an 8lb underlay
- Secondary cabinet color
- 2 CM Quartz countertops in kitchen and bathrooms
- Upgraded undermount silgranit kitchen sink
- Upgraded kitchen backsplash
- Stainless steel appliance package including a chimney hoodfan and built in microwave
- 9' high basement foundation
- Gas line added for BBQ and kitchen range
- Additional windows added to side elevation
- Permanent soffit lighting
- Rough-in's added for future basement suite development

Dimensions, sizes, specifications, layouts and materials are approximate only and subject to change without notice. The builder reserves the right to make change and modifications to the information contained herein. E.&O.E.

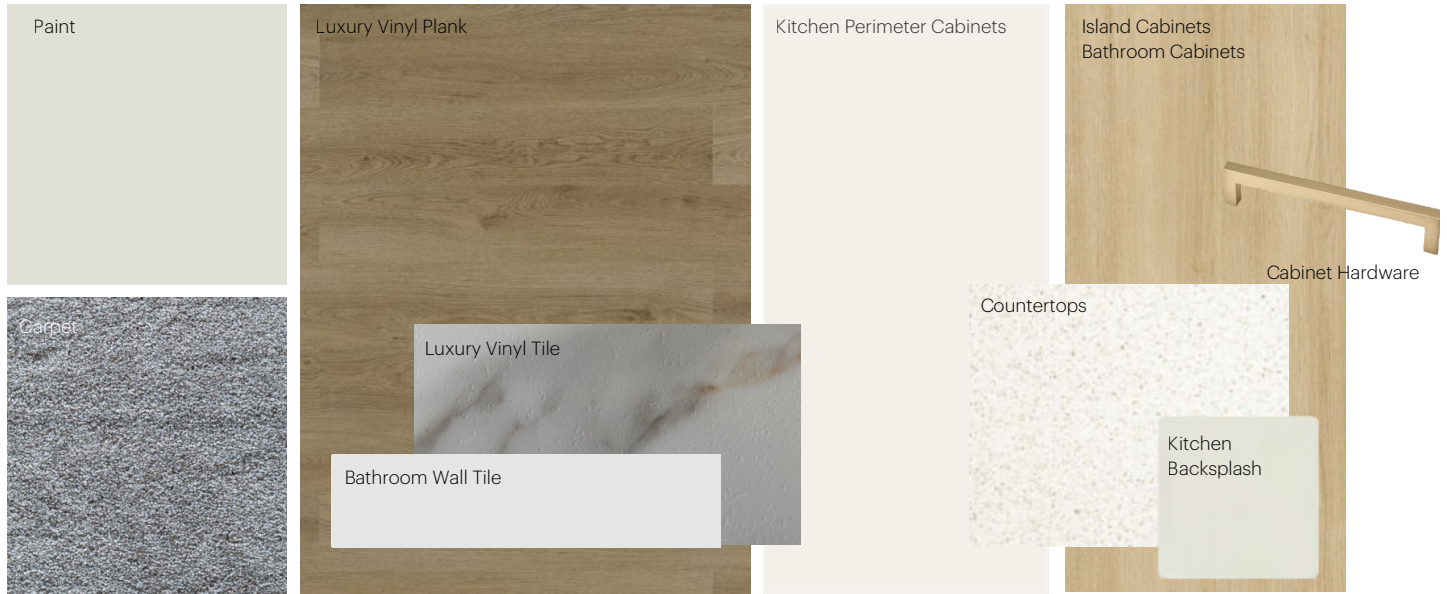
Laned 110

# Anthem Home Palette Selections

**Model:** Laned 110

**Address:** 191 Annette Landing, Calgary AB

## Cabinets, Flooring and Countertops



## Plumbing



Kitchen Sink



Kitchen Faucet



Pedestal Sink



Bathroom Sink



Bathroom Faucet



Tub / Shower Faucet

## Finishing



Interior Door Knob



Bathroom Accessories



Interior Doors



# Anthem Home Palette Selections

**Model:** Laned 110

**Address:** 191 Annette Landing, Calgary AB

## Lighting



Dining Room



Island Pendant



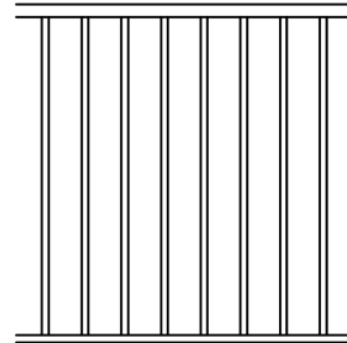
Bathrooms

\*Number of lights determined by size of vanity



Bedrooms

## Railing



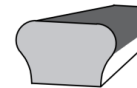
Spindle Pattern



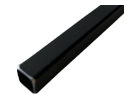
Post Cap



Post



Handrail



Iron Color

\* Handrail, post and cap painted to match the trim color

## Appliances



Fridge



Chimney Hoodfan



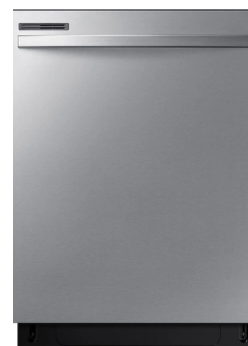
Electric Range



Washer



Dryer



Dishwasher



OTR Microwave

