

Quick Possession



EAST HAVEN

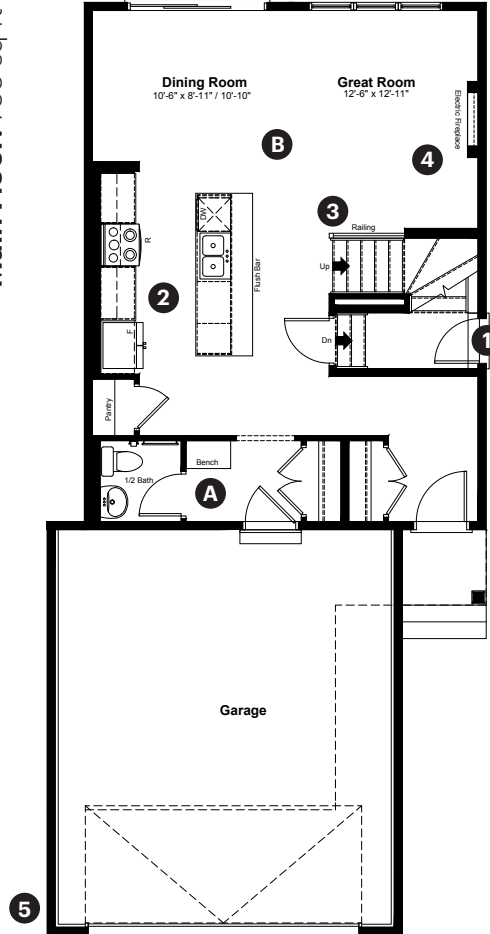
GRANDE PRAIRIE

8721 128 Avenue
Grande Prairie, AB

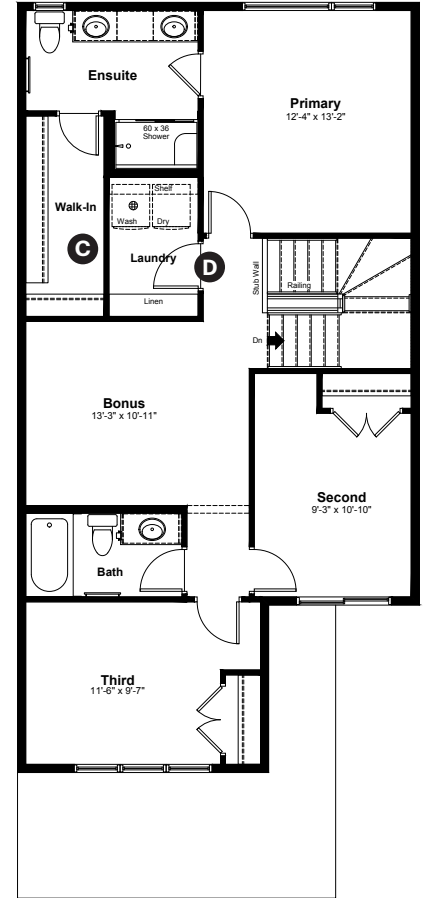
1,768 sq ft
3 bedrooms
2.5 bathrooms

Prairie Elevation

Main Floor: 756 sq ft



Upper Floor: 1,012 sq ft



Quick Possession Home Options

- 1 Side entrance
- 2 Level 2 kitchen cabinet layout
- 3 Main floor railing
- 4 Electric fireplace with mantel
- 5 2' added to garage width and length and floor drain added

Quick Possession Home Highlights

- A Built-in bench in mudroom
- B 9' high main floor ceilings
- C Large walk-in closet
- D Spacious laundry room

Dimensions, sizes, specifications, layouts and materials are approximate only and subject to change without notice. The builder reserves the right to make change and modifications to the information contained herein. E.&O.E.

Front Drive 160

Quick
Possession

EAST HAVEN

GRANDE PRAIRIE

8721 128 Avenue
Grande Prairie, AB

1,768 sq ft
3 bedrooms
2.5 bathrooms

Prairie Elevation

Anthem 



Features

Anthem Construction Standards

- Low maintenance architectural asphalt shingles
- Anthem maximizes window coverage on every home to provide your home with natural light. Windows are also triple plane low-E argon filled windows above grade
- Includes a 50-gallon gas water tank and 96% high-efficient gas furnace with dual-stage with variable speeds. It also has an integrated HRV system with dedicated pick-up locations in each bathroom with timers for easy use
- Decora type switches throughout the home
- R-50 blown insulation in all attic spaces
- Rough-in waterline to the fridge
- MDF shelving in closets, laundry linen, and kitchen pantry

The Interior

- Ceilings are finished with a splatter texture
- Luxury vinyl plank flooring on main floor
- Luxury vinyl tile flooring in upper bathrooms and laundry
- Carpet on finished stairs and upstairs with an 8lb underlay
- Upgraded 3CM quartz countertops in kitchen and bathrooms
- Upgraded light fixture in dining area
- Undermount silgranit kitchen sink
- Upgraded kitchen backsplash
- Undermount bathroom sinks
- Stainless steel appliance package including a chimney hoodfan
- Iron railing on main floor stairwell
- 9' high basement foundation

Front Drive 160

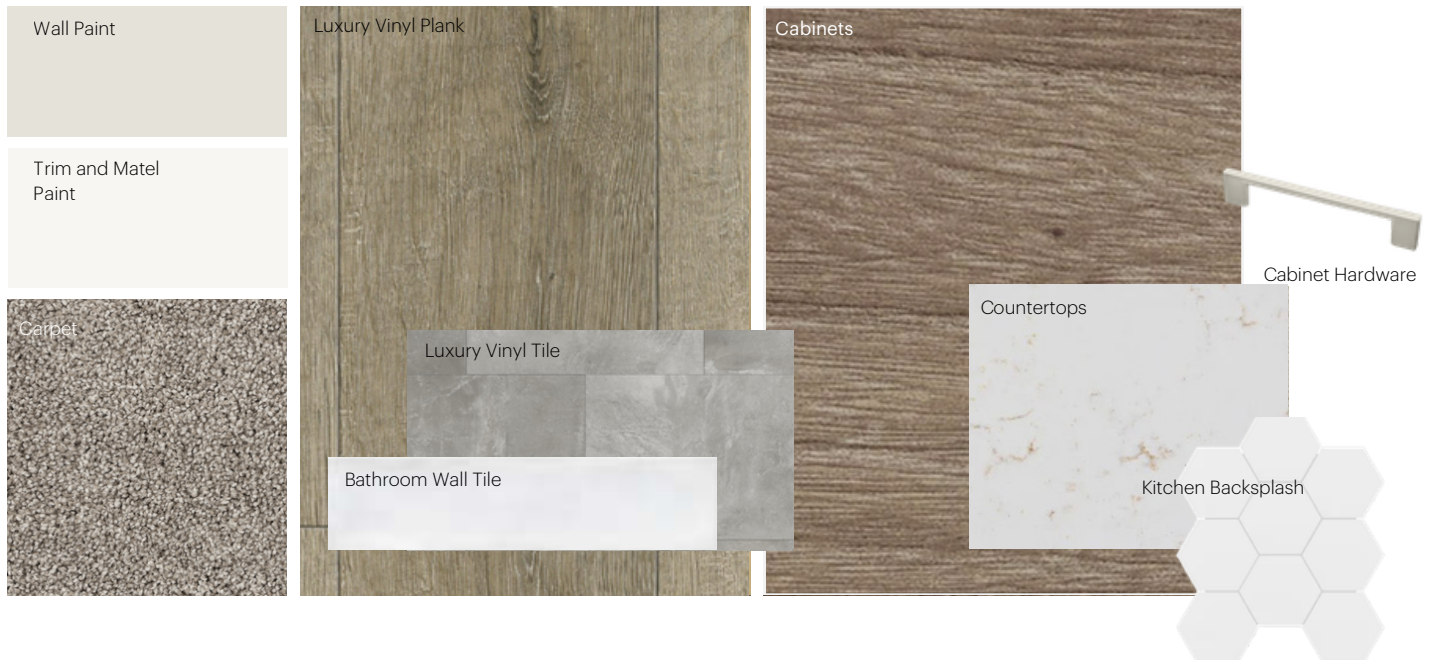
Dimensions, sizes, specifications, layouts and materials are approximate only and subject to change without notice. The builder reserves the right to make change and modifications to the information contained herein. E.&O.E.

Anthem Home Palette Selections

Model: Front Drive 160

Address: 8721 128 Avenue, Grand Prairie AB

Cabinets, Flooring and Countertops



Plumbing



Finishing



Anthem Home Palette Selections

Model: Front Drive 160

Address: 8721 128 Avenue, Grand Prairie AB

Lighting



Dining Room



Island Pendant



Stairwell



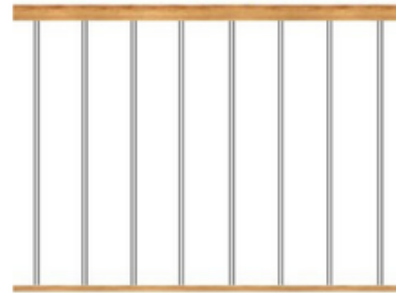
Bathrooms

*Number of lights determined by size of vanity



Bedrooms

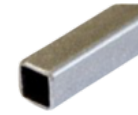
Railing



Spindle Pattern



Handrail



Iron Color



Post Cap

Post

* Handrail, post and cap painted to match the trim color

Appliances



Fridge



Chimney Hoodfan



Electric Range



Dishwasher



Microwave

