

Quick Possession



EAST HAVEN

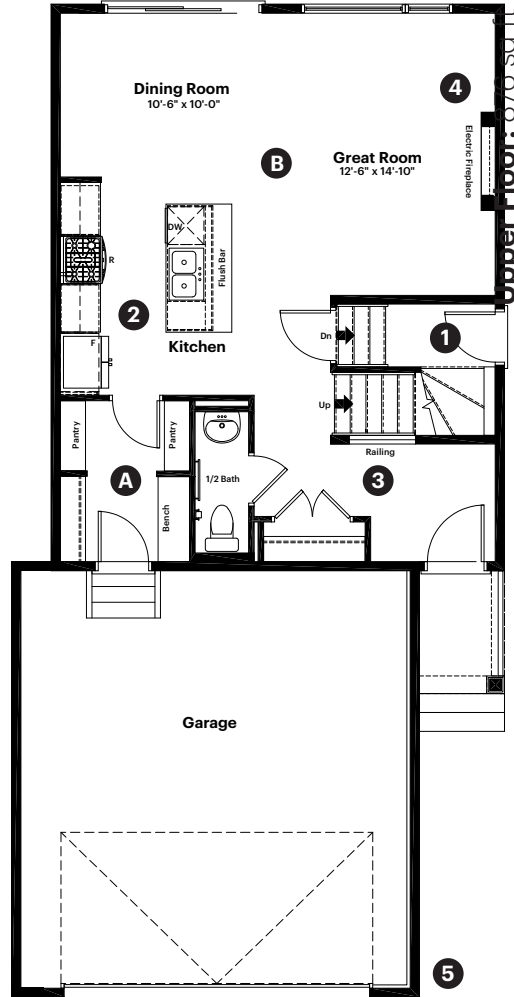
GRANDE PRAIRIE

8629 128 Avenue
Grande Prairie, AB

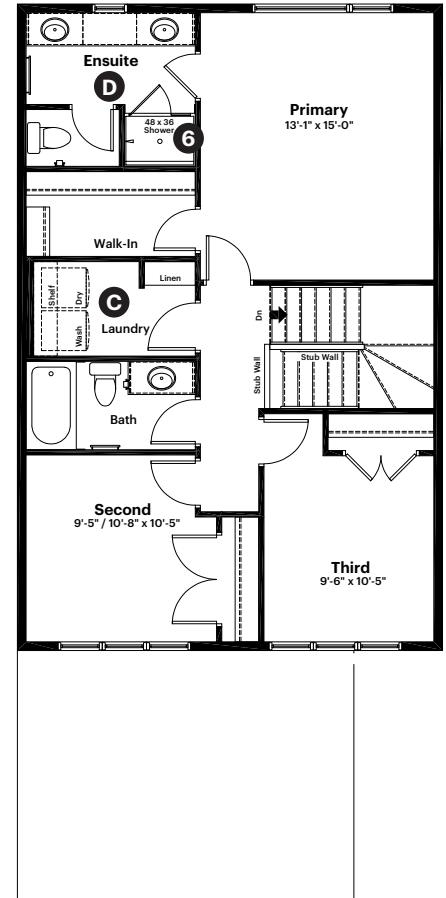
1,596 sq ft
3 bedrooms
2.5 bathrooms

Craftsman Elevation

Main Floor: 720 sq ft



Upper Floor: 876 sq ft



Quick Possession Home Options

- 1 Side entrance to the finished basement suite
- 2 Level 2 kitchen cabinet layout in main kitchen
- 3 Main floor railing
- 4 Electric fireplace
- 5 Garage widened and lengthened by 2' and added floor drain
- 6 Tiled shower in ensuite

Quick Possession Home Highlights

- A Walk through pantry
- B 9' high main floor ceilings
- C Spacious laundry room
- D Double sinks in ensuite

Dimensions, sizes, specifications, layouts and materials are approximate only and subject to change without notice. The builder reserves the right to make change and modifications to the information contained herein. E.&O.E.

Front Drive 190

Quick
Possession

EAST HAVEN

GRANDE PRAIRIE

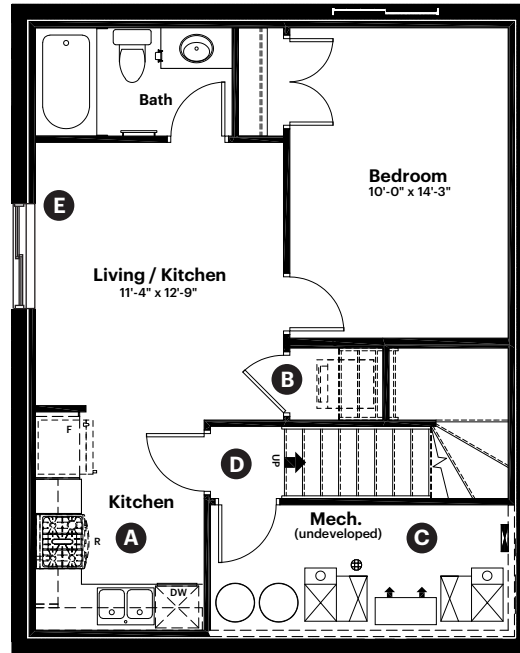
8629 128 Avenue
Grande Prairie, AB

501 sq ft
1 bedroom
1 bathroom

Craftsman Elevation

Anthem 

Finished Basement Suite: 501 sq ft



Basement Suite Highlights

- A** Kitchen with gas line and appliance rough ins
- B** Laundry closet with rough in for washer/dryer
- C** Mechanical room with 2 furnaces and 2 hot water tanks
- D** Enclosed landing with SolidCore door and side entry
- E** Additional window

Dimensions, sizes, specifications, layouts and materials are approximate only and subject to change without notice. The builder reserves the right to make change and modifications to the information contained herein. E.&O.E.

Front Drive 190

Quick
Possession

EAST HAVEN

GRANDE PRAIRIE

8629 128 Avenue
Grande Prairie, AB

1,596 sq ft
3 bedrooms
2.5 bathrooms

Craftsman Elevation

Anthem 



Features

Anthem Construction Standards

- Low maintenance architectural asphalt shingles
- Anthem maximizes window coverage on every home to provide your home with natural light. Windows are also triple plane low-E argon filled windows above grade
- Includes a 50-gallon gas water tank and 96% high-efficient gas furnace with dual-stage with variable speeds. It also has an integrated HRV system with dedicated pick up locations in each bathroom with timers for easy use
- Decora type switches throughout the home
- R-50 blown insulation in all attic spaces
- Rough-in waterline to the fridge
- MDF shelving in closets and kitchen pantry

The Interior

- Ceilings are finished with a splatter texture
- Luxury vinyl plank flooring on main floor
- Luxury vinyl tile flooring in upper bathrooms and laundry
- Carpet on finished stairs and upstairs with an 8lb underlay
- 2 CM quartz countertops in kitchen and bathrooms
- Undermount stainless steel kitchen sink
- Undermount bathroom sinks
- Stainless steel appliance package in the main kitchen including a gas range and chimney hoodfan
- Stainless steel over the range microwave in basement suite kitchen
- Iron railing on main floor stairwell
- 9' high basement foundation

Front Drive 190

Dimensions, sizes, specifications, layouts and materials are approximate only and subject to change without notice. The builder reserves the right to make change and modifications to the information contained herein. E.&O.E.