

Quick Possession



EAST HAVEN

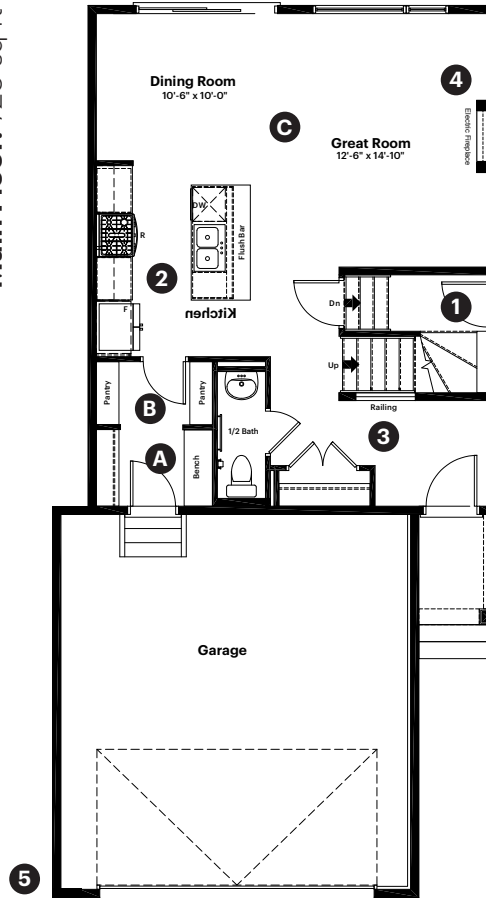
GRANDE PRAIRIE

12906 87 Street
Grande Prairie, AB

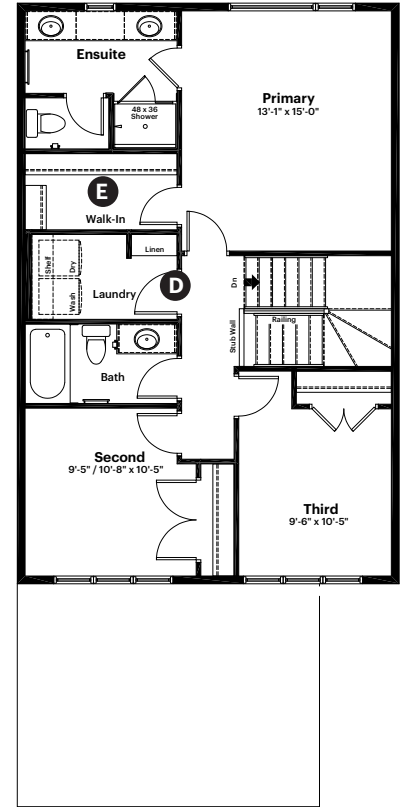
1,596 sq ft
3 bedrooms
2.5 bathrooms

Craftsman Elevation

Main Floor: 720 sq ft



Upper Floor: 876 sq ft



Quick Possession Home Options

- 1 Side entrance
- 2 Level 2 kitchen cabinet layout
- 3 Main floor railing
- 4 Electric fireplace with mantel
- 5 2' added to garage width and length and floor drain added

Quick Possession Home Highlights

- A Built in bench
- B Walk through pantry
- C 9' high main floor ceilings
- D Spacious laundry room
- E Large primary walk in closet

Front Drive 190

Quick
Possession

EAST HAVEN

GRANDE PRAIRIE

12906 87 Street
Grande Prairie, AB

1,596 sq ft
3 bedrooms
2.5 bathrooms

Craftsman Elevation

Anthem 



Features

Anthem Construction Standards

- Low maintenance architectural asphalt shingles
- Anthem maximizes window coverage on every home to provide your home with natural light. Windows are also triple plane low-E argon filled windows above grade
- Includes a 50-gallon gas water tank and 96% high-efficient gas furnace with dual-stage with variable speeds. It also has an integrated HRV system with dedicated pick-up locations in each bathroom with timers for easy use
- Decora type switches throughout the home
- R-50 blown insulation in all attic spaces
- Rough-in waterline to the fridge
- MDF shelving in closets, laundry linen, and kitchen pantry

The Interior

- Ceilings are finished with a splatter texture
- Luxury vinyl plank flooring on main floor
- Luxury vinyl tile flooring in upper bathrooms and laundry
- Carpet on finished stairs and upstairs with an 8lb underlay
- Upgraded 3CM quartz countertops in kitchen and bathrooms
- Upgraded undermount silgranit kitchen sink
- Upgraded kitchen backsplash
- Upgraded light fixture in dining area
- Stainless steel appliance package including a gas range and chimney hoodfan
- Undermount bathroom sinks
- Iron railing on main floor stairwell
- 9' high basement foundation
- Plumbing and mechanical rough-ins added for future kitchen and laundry in basement

Front Drive 190

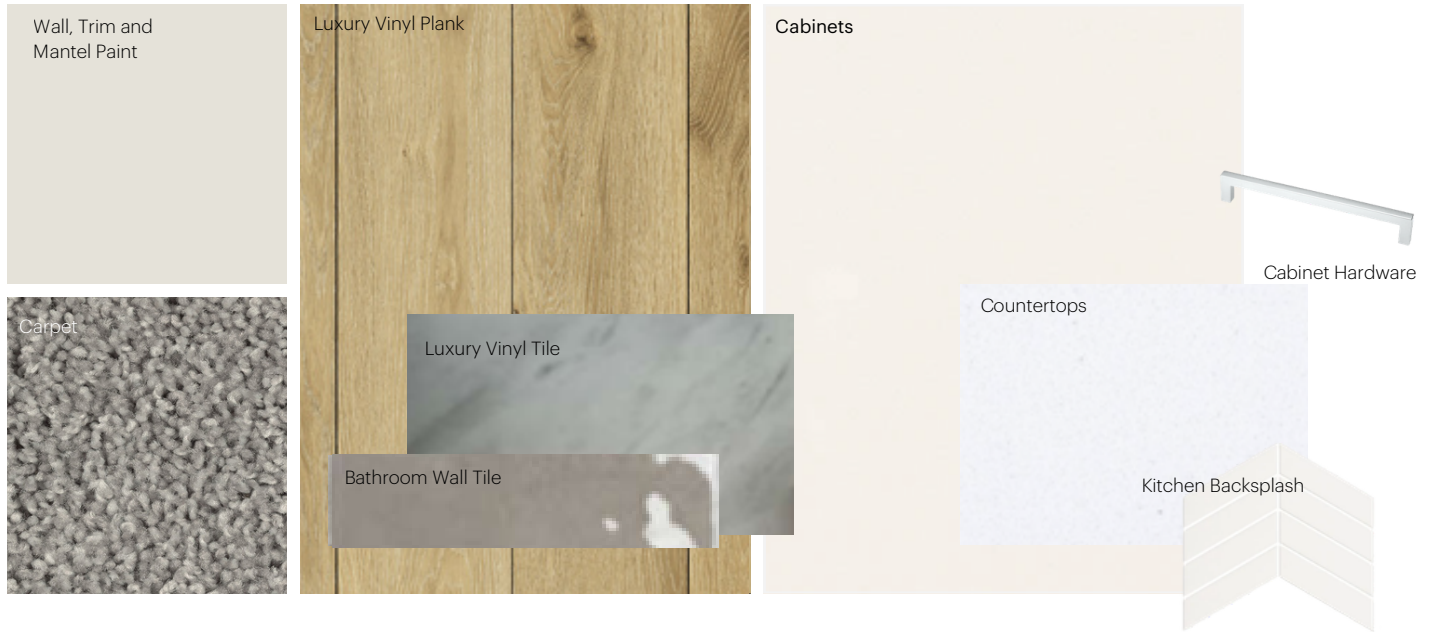
Dimensions, sizes, specifications, layouts and materials are approximate only and subject to change without notice. The builder reserves the right to make change and modifications to the information contained herein. E.&O.E.

Anthem Home Palette Selections

Model: Front Drive 190

Address: 12906 87 Street, Grand Prairie AB

Cabinets, Flooring and Countertops



Plumbing



Kitchen Sink



Kitchen Faucet



Pedestal Sink
*faucet shown is not included



Bathroom Sink



Bathroom Faucet



Tub / Shower Faucet

Finishing



Interior Door Knob



Bathroom Accessories



Interior Doors



Anthem Home Palette Selections

Model: Front Drive 190

Address: 12906 87 Street, Grand Prairie AB

Lighting



Dining Room



Island Pendant



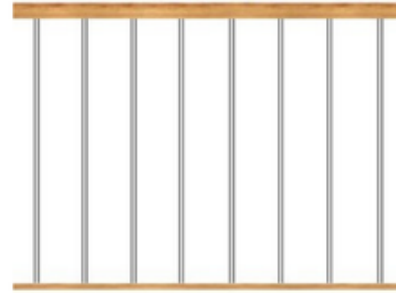
Bathrooms

*Number of lights determined by size of vanity



Bedrooms

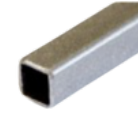
Railing



Spindle Pattern



Handrail



Iron Color



Post Cap

Post

* Handrail, post and cap painted to match the trim color

Appliances



Fridge



Chimney Hoodfan



Gas Range



Dishwasher



Microwave

