

Quick Possession



DANSEREAU MEADOWS

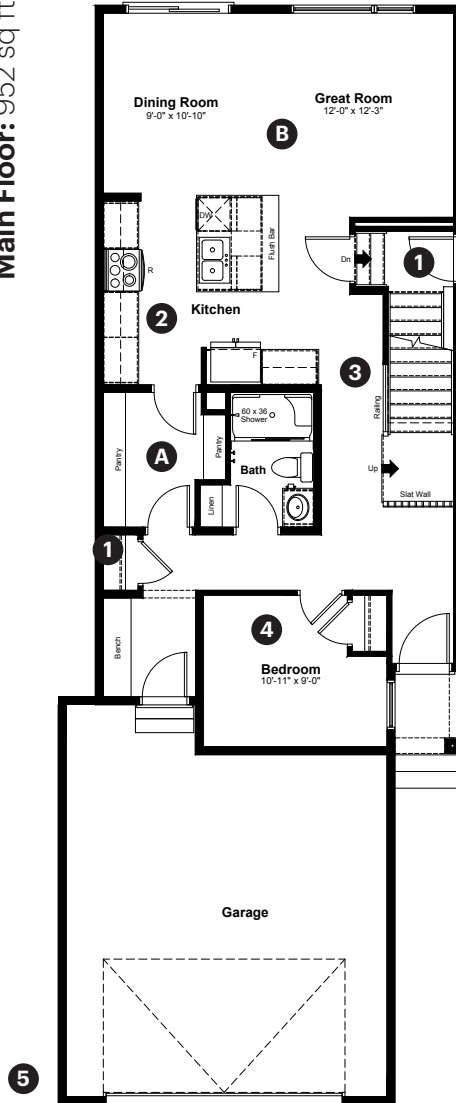
6129 Dansereau Crescent
Beaumont, AB

2,076 sq ft
4 bedrooms
3 bathrooms

Prairie Elevation

Front Drive 240

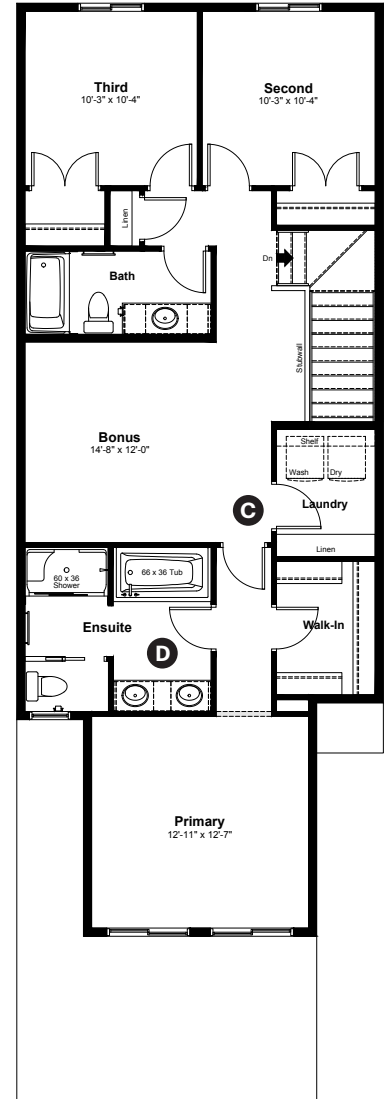
Main Floor: 952 sq ft



Quick Possession Home Options

- 1 Side entrance
- 2 Level 2 kitchen cabinet layout
- 3 Main floor railing
- 4 Main floor bedroom and full bathroom
- 5 Garage widened by 2'

Upper Floor: 1,124 sq ft



Quick Possession Home Highlights

- A Walk through pantry
- B 9' high main floor ceilings
- C Upper floor laundry room
- D Dual sinks in ensuite bathroom

Dimensions, sizes, specifications, layouts and materials are approximate only and subject to change without notice. The builder reserves the right to make change and modifications to the information contained herein. E.&O.E.

Quick
Possession

Anthem 

**DANSEREAU
MEADOWS**

**6129 Dansereau
Crescent
Beaumont, AB**

2,076 sq ft
4 bedrooms
3 bathrooms

Prairie Elevation



Features

Anthem Construction Standards

- Low maintenance architectural asphalt shingles
- Anthem maximizes window coverage on every home to provide your home with natural light. Windows are also triple plane low-E argon filled windows above grade
- Includes a 50-gallon gas water tank and 96% high-efficient gas furnace with dual-stage with variable speeds. It also has an integrated HRV system with dedicated pick-up locations in each bathroom with timers for easy use
- Decora type switches throughout the home
- R-50 blown insulation in all attic spaces
- Rough-in waterline to the fridge

The Interior

- Ceilings are finished with a splatter texture
- Luxury vinyl plank flooring on main floor
- Upgraded luxury vinyl tile flooring in upper bathrooms and laundry
- Carpet on finished stairs and upstairs with an 8lb underlay
- Secondary cabinet color in kitchen
- Upgraded 3 CM quartz countertops in kitchen and bathrooms
- Upgraded kitchen backsplash selection
- Upgraded undermount silgranit kitchen sink
- Upgraded chrome kitchen faucet
- Upgraded dining room light fixture and pendant light fixtures over island
- Handshower added to main floor bathroom
- Stainless steel appliance package including a chimney hoodfan and build in microwave
- 9' high basement foundation

Dimensions, sizes, specifications, layouts and materials are approximate only and subject to change without notice. The builder reserves the right to make change and modifications to the information contained herein. E.&O.E.

Front Drive 240