

Quick
Possession



CHELSEA

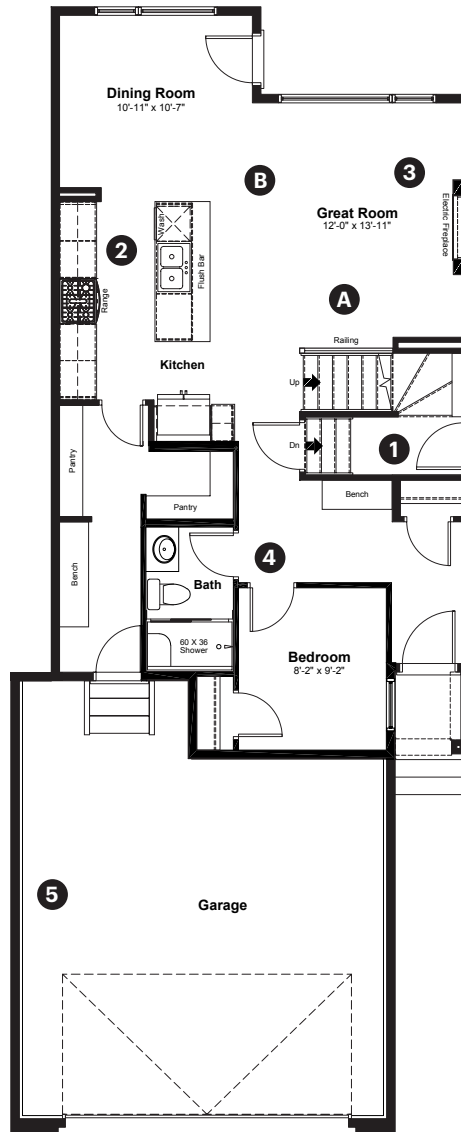
CHESTERMERE

7 Chelsea Port Link
Chestermere, AB

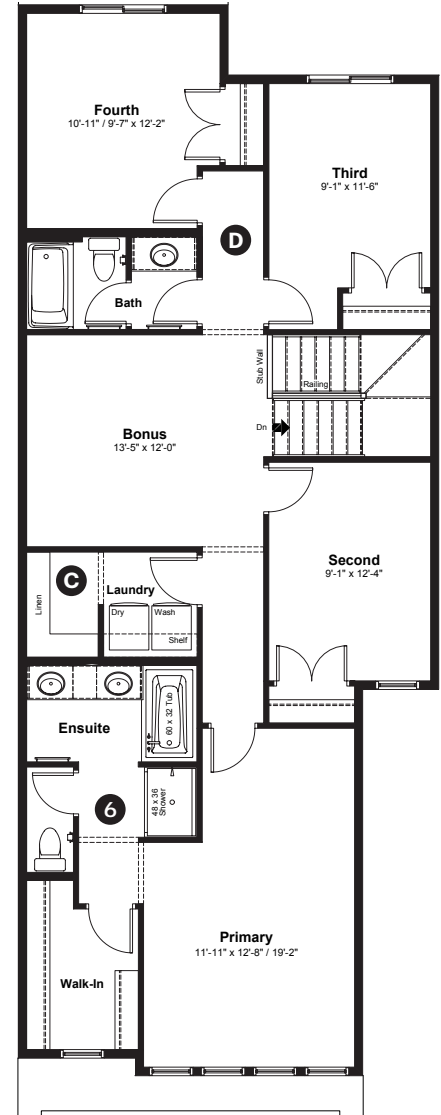
2,228 sq ft
4+1 bedrooms
3 bathrooms

Modern Prairie
Elevation

Main Floor: 914 sq ft



Upper Floor: 1,314 sq ft



Quick Possession Home Options

- 1 Side entry
- 2 Level 2 kitchen cabinet layout with gas range
- 3 Electric fireplace with tile to underside of the mantle
- 4 Main floor bedroom option
- 5 2' added to garage width
- 6 Tiled ensuite shower walls with niche

Quick Possession Home Highlights

- A Main floor railing
- B 9' high main floor ceilings
- C Spacious laundry room
- D Four bedrooms upstairs

Dimensions, sizes, specifications, layouts and materials are approximate only and subject to change without notice. The builder reserves the right to make change and modifications to the information contained herein. E.&O.E.

Front Drive 113

Quick
Possession

Anthem 

CHELSEA

CHESTERMERE

7 Chelsea Port Link
Chestermere, AB

2,228 sq ft
4+1 bedrooms
3 bathrooms

Modern Prairie
Elevation



Features

Anthem Construction Standards

- Low maintenance architectural asphalt shingles
- Anthem maximizes window coverage on every home to provide your home with natural light
- Windows are also triple plane low-E argon filled windows above grade
- Includes a 50-gallon gas water tank and 96% high-efficient gas furnace with dual-stage with variable speeds. It also has an integrated HRV system with dedicated pick-up locations in each
- bathroom with timers for easy use
- Decora type switches in the kitchen
- R-50 blown insulation in all attic spaces
- Rough-in waterline to fridge

The Interior

- Ceilings are finished with a knockdown texture
- Luxury vinyl plank flooring on main floor
- Luxury vinyl tile flooring in upper bathrooms and laundry
- Carpet on finished stairs and upstairs with an 8lb underlay
- Secondary cabinet color
- Quartz countertops in kitchen and bathrooms
- Undermount silgranit kitchen sink
- Undermount bathroom sinks
- Handshower added to main floor bathroom
- Stainless steel appliance package with gas range and chimney hoodfan
- Iron spindle railing on main floor stairwell
- 9' high basement foundation
- Windows added to side elevations

Dimensions, sizes, specifications, layouts and materials are approximate only and subject to change without notice. The builder reserves the right to make change and modifications to the information contained herein. E.&O.E.

Front Drive 113

Anthem Home Palette Selections

Model: Front Drive 113
 Address: 7 Chelsea Port Link, Chestermere AB

Cabinets, Flooring and Countertops

Wall Paint

Trim & Mantle Paint

Carpet

Luxury Vinyl Plank

Fireplace Tile

Bathroom + Laundry Wall Tile

Luxury Vinyl Tile

Cabinets
Kitchen Lower, Fridge
Wall and Island
Profile: 2 1/4" Shaker

Cabinets
Kitchen Uppers
Bathroom Vanities
Profile: 2 1/4" Shaker

Cabinet Hardware

Countertops

Kitchen Backsplash

Plumbing

Kitchen Sink

Kitchen Faucet

Bathroom Faucet

Bathroom Sink

Tub / Shower Faucet

Main Floor Bathroom Showerhead

Roman Tub Faucet

Finishing

Deadbolt

Interior Door Lever

Bathroom Accessories

Exterior Door Handleset

Interior Doors

Anthem Home Palette Selections

Model: Front Drive 113 **Address:** 7 Chelsea Port Link, Chestermere AB

Lighting



Dining Room



Island Pendant



Stairwell



Halls / Closets



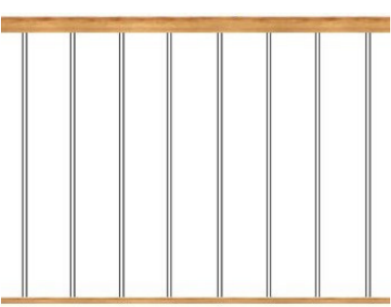
Bedrooms




Bathrooms

*Number of lights determined by size of vanity


Railing




Spindle Pattern



Handrail



Iron Color



Post Cap

Post

* Handrail, post and cap painted to match the trim color

Appliances



Fridge



Chimney Hoodfan



Gas Range



Washer



Dryer



Dishwasher



Microwave

