

Quick
Possession



CHELSEA

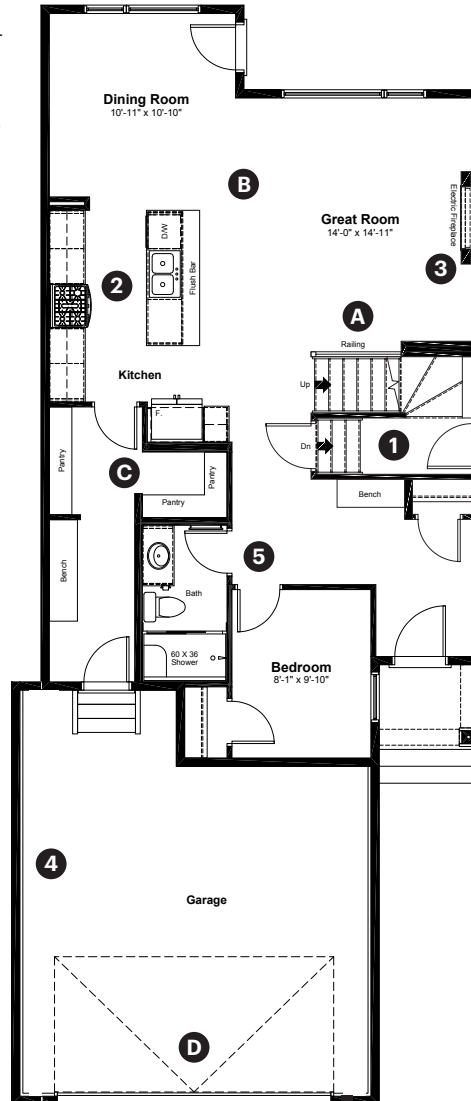
CHESTERMERE

646 Chelsea Pier Run
Chestermere, AB

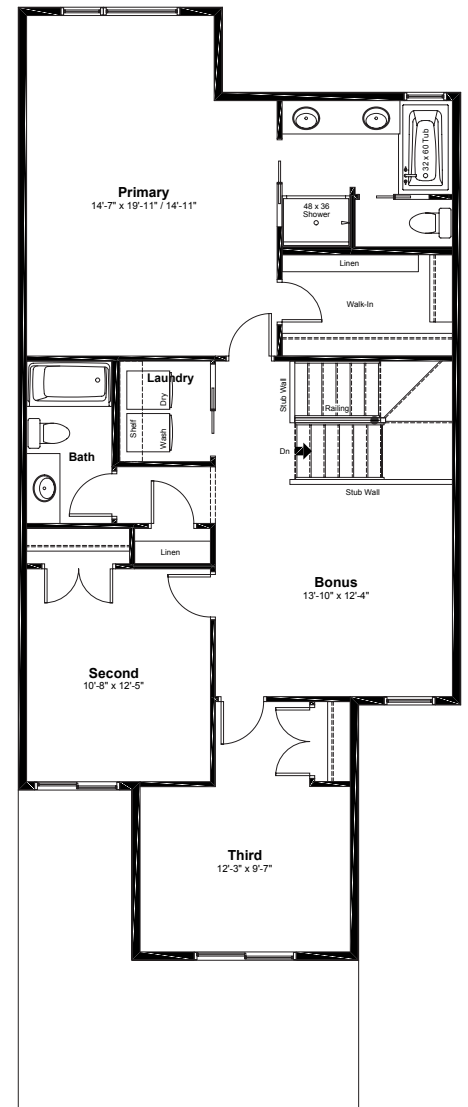
2,257 sq ft
3+1 bedrooms
3 bathrooms

Prairie Elevation

Main Floor: 1,028 sq ft



Upper Floor: 1,229 sq ft



Quick Possession Home Options

- 1 Side entry
- 2 Level 2 kitchen cabinet layout
- 3 Electric fireplace with mantle
- 4 2' added to garage width
- 5 Main floor bedroom with bathroom

Quick Possession Home Highlights

- A Main floor railing
- B 9' high main floor ceilings
- C Oversized pantry
- D 8' overhead garage door

Dimensions, sizes, specifications, layouts and materials are approximate only and subject to change without notice. The builder reserves the right to make change and modifications to the information contained herein. E.&O.E.

Front Drive 111

Quick
Possession

Anthem 

CHELSEA

CHESTERMERE

646 Chelsea Pier Run
Chestermere, AB

2,257 sq ft
3+1 bedrooms
3 bathrooms

Prairie Elevation



Features

Anthem Construction Standards

- Low maintenance architectural asphalt shingles
- Anthem maximizes window coverage on every home to provide your home with natural light
- Windows are also triple plane low-E argon filled windows above grade
- Includes a 50 gallon gas water tank and 96% high-efficient gas furnace with dual-stage with variable speeds. It also has an integrated HRV system with dedicated pick up locations in each bathroom with timers for easy use
- Decora type switches in kitchen
- R-50 blown insulation in all attic spaces
- Rough-in waterline to the fridge

The Interior

- Ceilings are finished with a knockdown texture
- Luxury vinyl plank flooring on main floor
- Luxury vinyl tile flooring in upper bathrooms and laundry
- Carpet on finished stairs and upstairs with an 8lb underlay
- Secondary cabinet color
- Quartz countertops in kitchen and bathrooms
- Undermount silgranit kitchen sink
- Executive level kitchen backsplash
- Handshower in main floor bathroom
- Stainless steel appliance package with gas range, chimney hoodfan and built in microwave
- Iron spindle railing on main floor stairwell
- 9' high basement foundation
- Windows added to side elevation

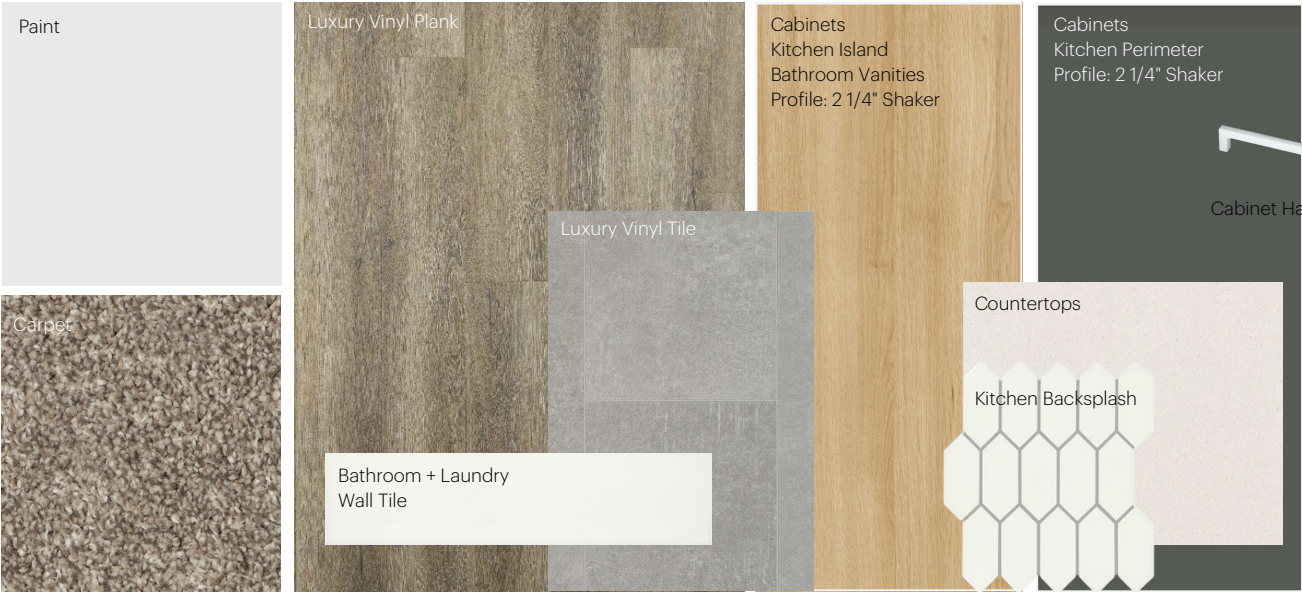
Dimensions, sizes, specifications, layouts and materials are approximate only and subject to change without notice. The builder reserves the right to make change and modifications to the information contained herein. E.&O.E.

Front Drive 111

Anthem Home Palette Selections

Model: Front Drive 111
 Address: 646 Chelsea Pier Run, Chestermere AB

Cabinets, Flooring and Countertops



Plumbing



Finishing



Anthem Home Palette Selections

Model: Front Drive 111

Address: 646 Chelsea Pier Run, Chestermere AB

Lighting



Dining Room



Island Pendant



Stairwell



Halls / Closets



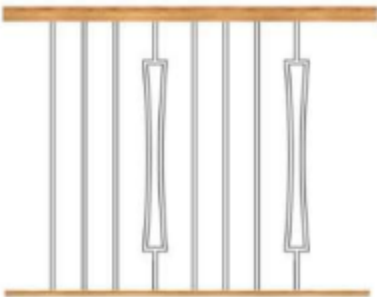
Bedrooms




Bathrooms

*Number of lights determined by size of vanity


Railing




Spindle Pattern



Handrail




Iron Color




Post Cap

Post


Appliances




Fridge




Chimney Hoodfan



Gas Range



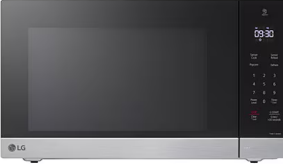
Washer



Dryer



Dishwasher



Microwave

