

Quick
Possession



CHELSEA

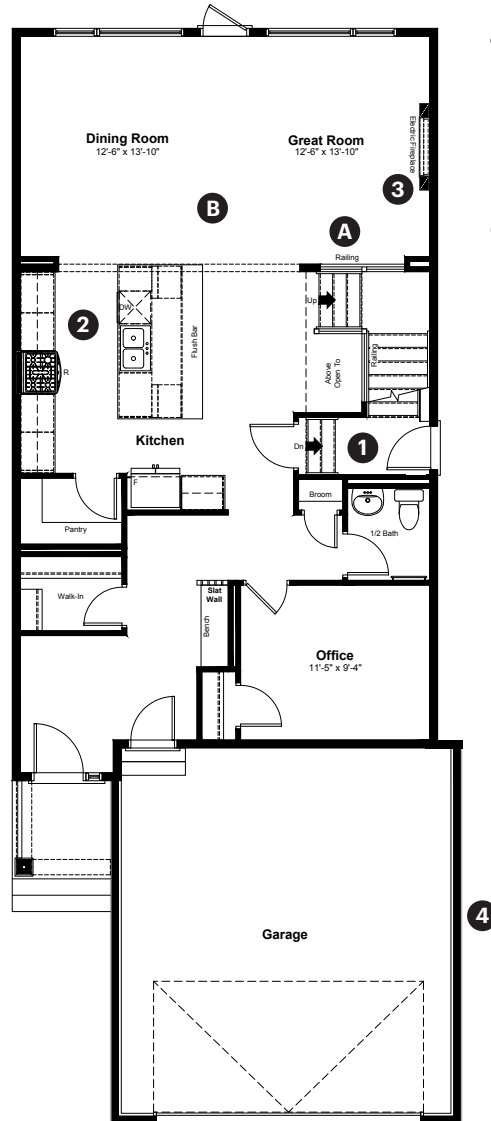
CHESTERMERE

19 Chelsea Port Link
Chestermere, AB

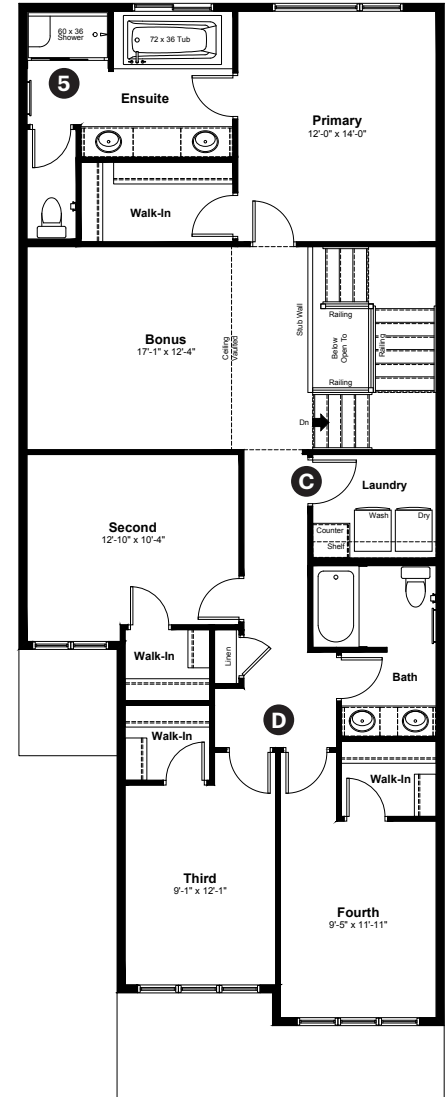
2,605 sq ft
4 bedrooms
2.5 bathrooms

Prairie Elevation

Main Floor: 1,157 sq ft



Upper Floor: 1,448 sq ft



Quick Possession Home Options

- 1 Side entry
- 2 Level 3 kitchen cabinet layout
- 3 Electric fireplace with tile to underside of the mantle
- 4 2' added to garage width
- 5 Tiled ensuite shower walls with niche

Quick Possession Home Highlights

- A Main floor railing
- B 9' high main floor ceilings
- C Spacious laundry room
- D Four bedrooms upstairs

Dimensions, sizes, specifications, layouts and materials are approximate only and subject to change without notice. The builder reserves the right to make change and modifications to the information contained herein. E.&O.E.

Front Drive 124

Quick
Possession

Anthem 

CHELSEA

CHESTERMERE

19 Chelsea Port Link
Chestermere, AB

2,605 sq ft
4 bedrooms
2.5 bathrooms

Prairie Elevation



Features

Anthem Construction Standards

- Low maintenance architectural asphalt shingles
- Anthem maximizes window coverage on every home to provide your home with natural light
- Windows are also triple plane low-E argon filled windows above grade
- Includes a 50 gallon gas water tank and 96% high-efficient gas furnace with dual-stage with variable speeds. It also has an integrated HRV system with dedicated pick up locations in each bathroom with timers for easy use
- Decora type switches in kitchen
- R-50 blown insulation in all attic spaces
- Rough-in waterline to the fridge

The Interior

- Ceilings are finished with a knockdown texture
- Luxury vinyl plank flooring on main floor
- Luxury vinyl tile flooring in upper bathrooms and laundry
- Carpet on finished stairs and upstairs with an 8lb underlay
- Secondary cabinet color
- Quartz countertops in kitchen, bathrooms and laundry room
- Undermount silgranit kitchen sink
- Stainless steel appliance package with gas cooktop, chimney hoodfan and wall oven
- Iron spindle railing on main floor stairwell
- 9' high basement foundation
- Windows added to side elevation

Dimensions, sizes, specifications, layouts and materials are approximate only and subject to change without notice. The builder reserves the right to make change and modifications to the information contained herein. E.&O.E.

Front Drive 124

Anthem Home Palette Selections

Model: Front Drive 124 **Address:** 19 Chelsea Port Link, Chestermere AB

Cabinets, Flooring and Countertops

Paint

Carpet

Luxury Vinyl Plank

Fireplace Tile

Bathroom + Laundry Wall Tile

Luxury Vinyl Tile

Cabinets
Kitchen Lower, Fridge Wall and Island
Bathroom Vanities

Cabinets
Kitchen Uppers
Laundry Room

Cabinet Hardware

Countertops

Kitchen Backsplash

Plumbing

Kitchen Sink

Pedestal Sink

*faucet shown is not included

Bathroom Faucet

Bathroom Sink

Kitchen Faucet

Tub / Shower Faucet

Roman Tub Faucet

Finishing

Deadbolt

Interior Door Lever

Bathroom Accessories

Exterior Door Handleset

Interior Doors

The Builder reserves the right to make changes and modifications to the information contained herein. Features and finishes are subject to change without notice. E.&O.E.

Anthem

Anthem Home Palette Selections

Model: Front Drive 124

Address: 19 Chelsea Port Link, Chestermere AB

Lighting



Dining Room



Island Pendant



Stairwell



Halls / Closets



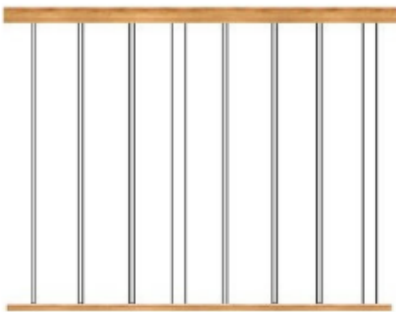
Bedrooms




Bathrooms

*Number of lights determined by size of vanity

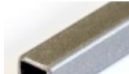
Railing




Spindle Pattern




Handrail



Iron Color



Post



Post Cap

Appliances



Fridge



Chimney Hoodfan



Gas Cooktop



Built-In Microwave



Washer



Dryer



Dishwasher



Built-In Oven

