

Quick
Possession

McConachie
HEIGHTS

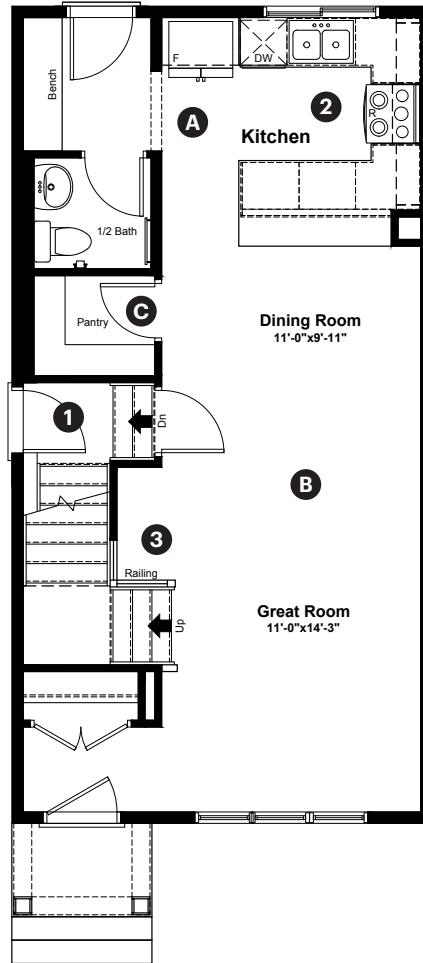
6281 175A
Avenue NW
Edmonton, AB

1,260 sq ft
3 bedrooms
2.5 bathrooms

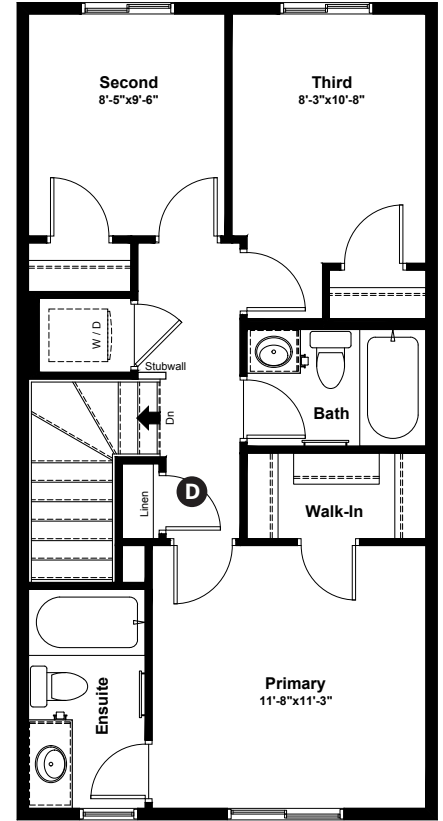
Craftsman Elevation

Anthem

Main Floor: 630 sq ft



Upper Floor: 630 sq ft



Quick Possession Home Options

- 1 Side entrance
- 2 Level 2 kitchen cabinet layout
- 3 Main floor railing

Quick Possession Home Highlights

- A Rear kitchen
- B 9' high main floor ceilings
- C Walk-in pantry in kitchen
- D Upstairs linen closet

Dimensions, sizes, specifications, layouts and materials are approximate only and subject to change without notice. The builder reserves the right to make change and modifications to the information contained herein. E.&O.E.

Laned 161

Quick
Possession

Anthem 

McConachie
HEIGHTS

6281 175A
Avenue NW
Edmonton, AB

1,260 sq ft
3 bedrooms
2.5 bathrooms

Craftsman Elevation



Features

Anthem Construction Standards

- Low maintenance architectural asphalt shingles
- Anthem maximizes window coverage on every home to provide your home with natural light. Windows are also triple plane low-E argon filled windows above grade
- Includes an 80-gallon electric water tank and 96% high-efficient gas furnace with dual-stage with variable speeds. It also has an integrated HRV system with dedicated pick-up locations in each bathroom with timers for easy use
- Decora type switches throughout the home
- R-50 blown insulation in all attic spaces
- Rough-in waterline to the fridge

The Interior

- Ceilings are finished with a splatter texture
- Luxury vinyl plank flooring on main floor
- Luxury vinyl tile flooring in upper bathrooms and laundry
- Carpet on finished stairs and upstairs with an 8lb underlay
- 2 CM quartz countertops in kitchen and bathrooms
- Undermount stainless steel kitchen sink
- Undermount bathroom sinks
- Stainless steel appliance package
- Iron railing on main floor stairwell

Dimensions, sizes, specifications, layouts and materials are approximate only and subject to change without notice. The builder reserves the right to make change and modifications to the information contained herein. E.&O.E.

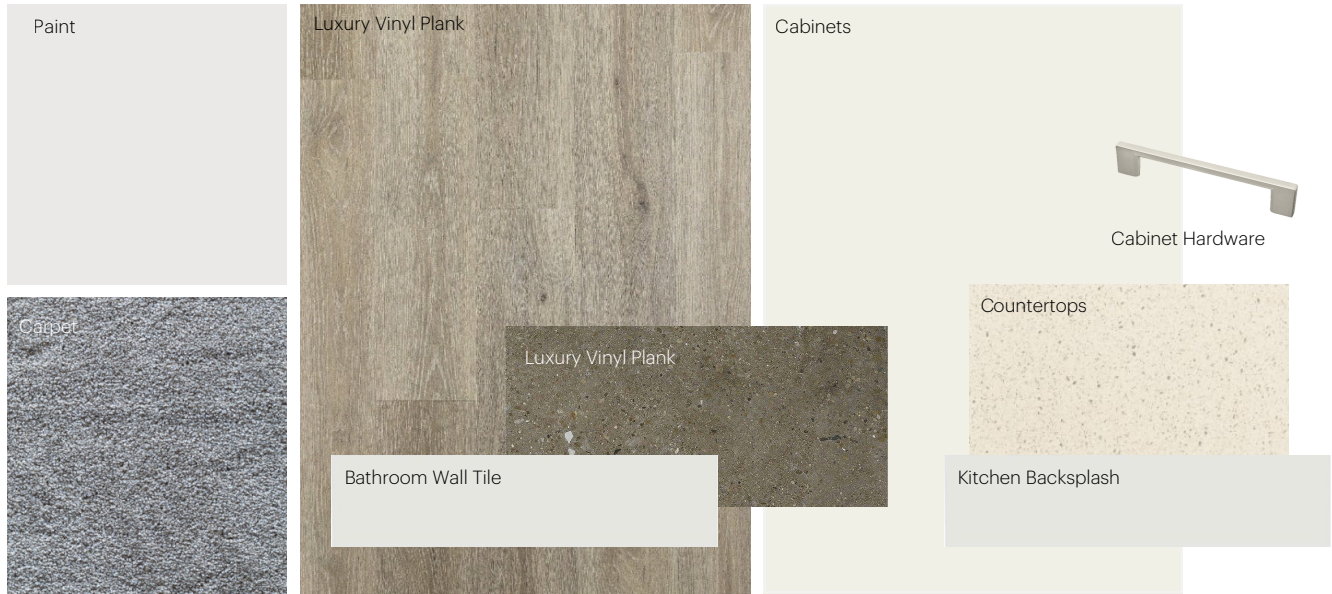
Laned 161

Anthem Home Palette Selections

Model: Laned 161

Address: 6281 175A Avenue NW, Edmonton AB

Cabinets, Flooring and Countertops



Plumbing



Kitchen Sink



Kitchen Faucet



Bathroom Faucet



Pedestal Sink
*faucet shown is not included



Bathroom Sink



Tub / Shower Faucet

Finishing



Deadbolt



Interior Door Knob



Bathroom Accessories



Interior Doors



Anthem Home Palette Selections

Model: Laned 161

Address: 6281 175A Avenue NW, Edmonton AB

Lighting



Dining Room



Island Pendant



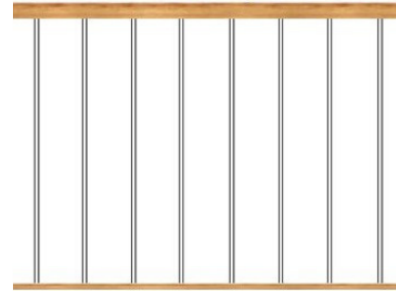
Bathrooms

*Number of lights determined by size of vanity



Bedrooms

Railing



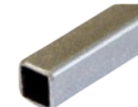
Spindle Pattern



Post Cap



Handrail



Iron Color

Post

* Handrail, post and cap painted to match the trim color

Appliances



Fridge



Electric Range



Dishwasher



OTR Microwave

