

Quick Possession



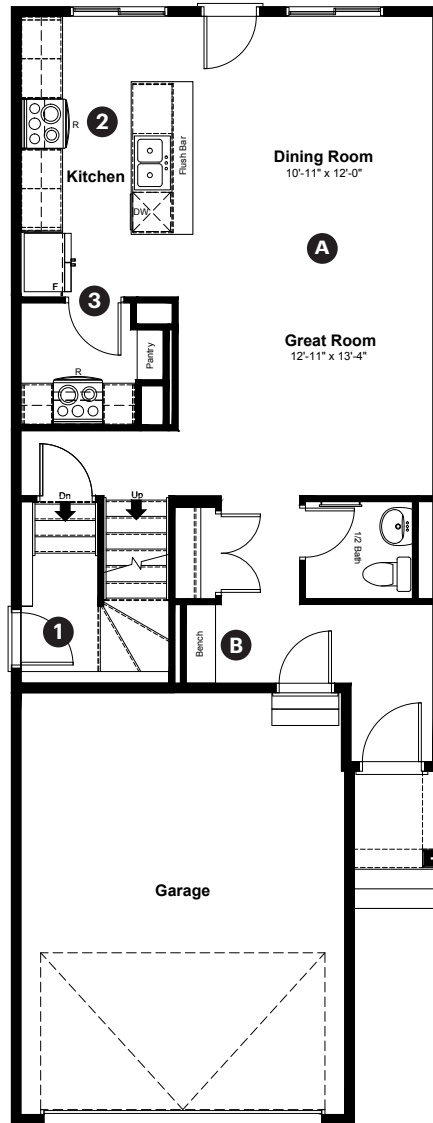
McConachie HEIGHTS

17912 63 Street NW
Edmonton, AB

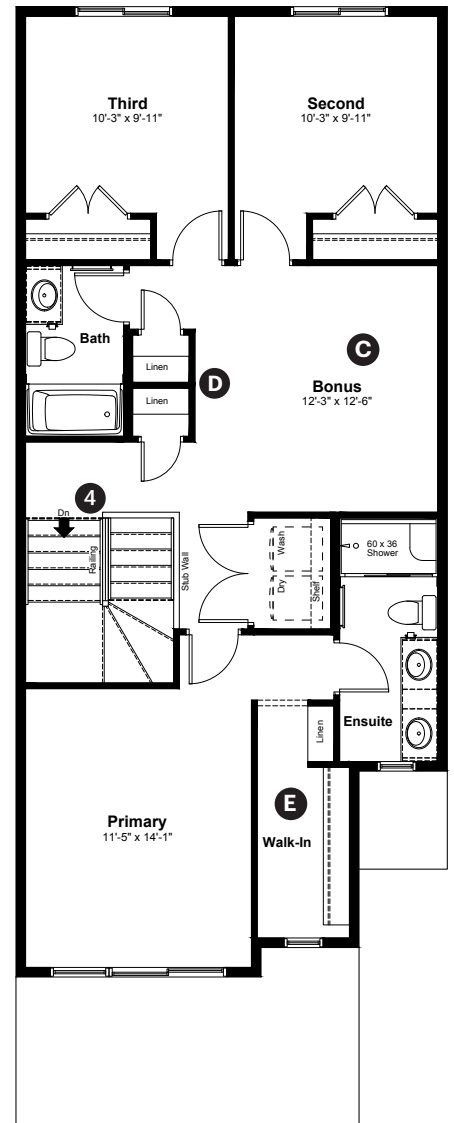
1,825 sq ft
3 bedrooms
2.5 bathrooms

Craftsman Elevation

Main Floor: 791 sq ft



Upper Floor: 1,034 sq ft



Quick Possession Home Options

- 1 Side entrance
- 2 Level 2 kitchen cabinet layout
- 3 Working kitchen
- 4 Main floor railing

Quick Possession Home Highlights

- A 9' high main floor ceilings
- B Built in bench
- C Central bonus room
- D Double linen closets
- E Large primary walk in closet

Dimensions, sizes, specifications, layouts and materials are approximate only and subject to change without notice. The builder reserves the right to make change and modifications to the information contained herein. E.&O.E.

Front Drive 200

Quick
Possession

Anthem 

McConachie
HEIGHTS

**17912 63 Street NW
Edmonton, AB**

1,825 sq ft
3 bedrooms
2.5 bathrooms

Craftsman Elevation



Artists interpretation only. May not reflect actual colours.

Craftsman

Features

Anthem Construction Standards

- Low maintenance architectural asphalt shingles
- Anthem maximizes window coverage on every home to provide your home with natural light. Windows are also triple plane low-E argon filled windows above grade
- Includes a 50-gallon gas water tank and 96% high-efficient gas furnace with dual-stage with variable speeds. It also has an integrated HRV system with dedicated pick-up locations in each bathroom with timers for easy use
- Decora type switches throughout the home
- R-50 blown insulation in all attic spaces
- Rough-in waterline to the fridge

The Interior

- Ceilings are finished with a splatter texture
- Luxury vinyl plank flooring on main floor
- Upgraded luxury vinyl tile flooring in upper bathrooms and laundry
- Carpet on finished stairs and upstairs with an 8lb underlay
- Upgraded door hardware throughout
- Secondary cabinet color
- Upgraded dining light and island pendants
- Upgraded 3CM quartz countertops in kitchen, working kitchen and bathrooms
- Upgraded undermount silgranit kitchen sink
- Upgraded kitchen faucet
- Upgraded backsplash in kitchen and working kitchen
- Undermount bathroom sinks
- Stainless steel appliance package with chimney hoodfan in main kitchen
- Iron railing on main floor stairwell

Dimensions, sizes, specifications, layouts and materials are approximate only and subject to change without notice. The builder reserves the right to make change and modifications to the information contained herein. E.&O.E.

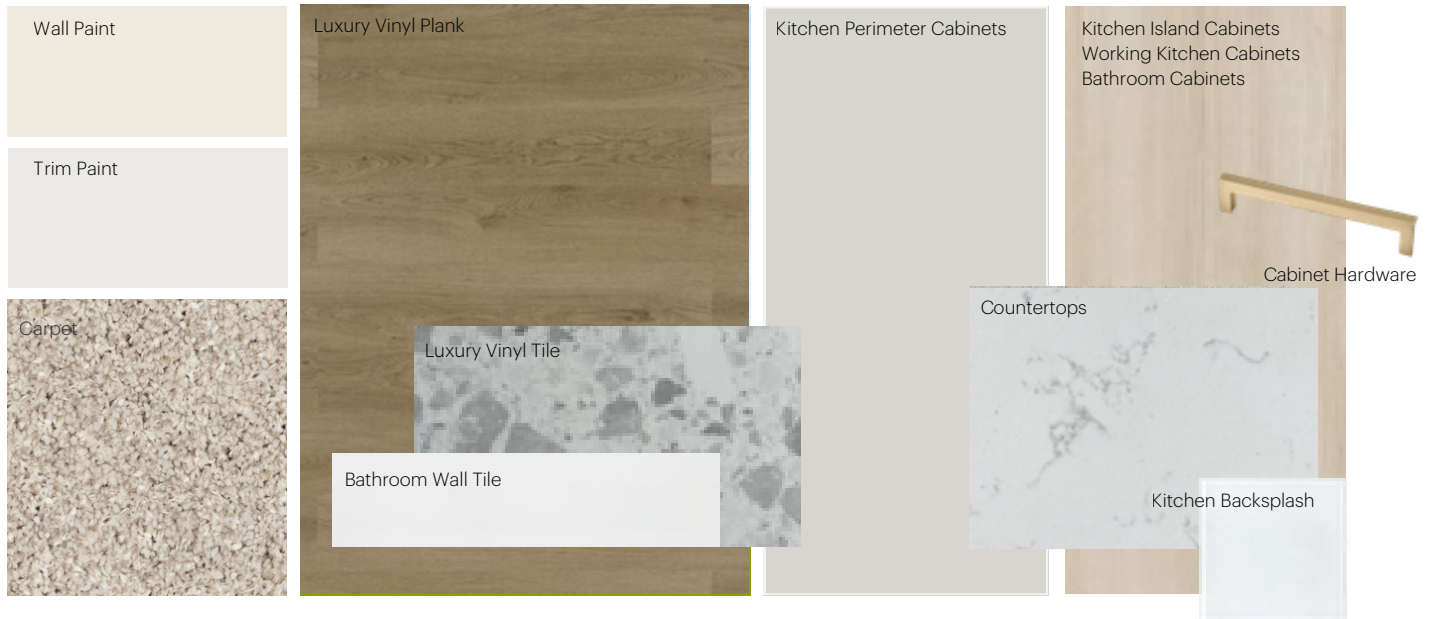
Front Drive 200

Anthem Home Palette Selections

Model: Front Drive 200

Address: 17912 63 Street, Edmonton AB

Cabinets, Flooring and Countertops



Plumbing



Finishing



Anthem Home Palette Selections

Model: Front Drive 200

Address: 17912 63 Street, Edmonton AB

Lighting



Dining Room



Island Pendant



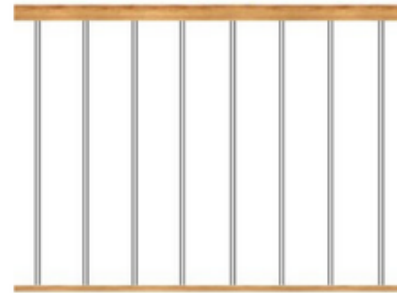
Bathrooms

*Number of lights determined by size of vanity



Bedrooms

Railing



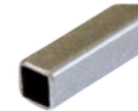
Spindle Pattern



Post Cap



Handrail



Iron Color

Post

* Handrail, post and cap painted to match the trim color

Appliances



Fridge



Main Kitchen
Chimney Hoodfan



Working Kitchen
Under Cabinet Range Hood



Electric Range



Dishwasher



Microwave

