

Quick
Possession

McConachie
HEIGHTS

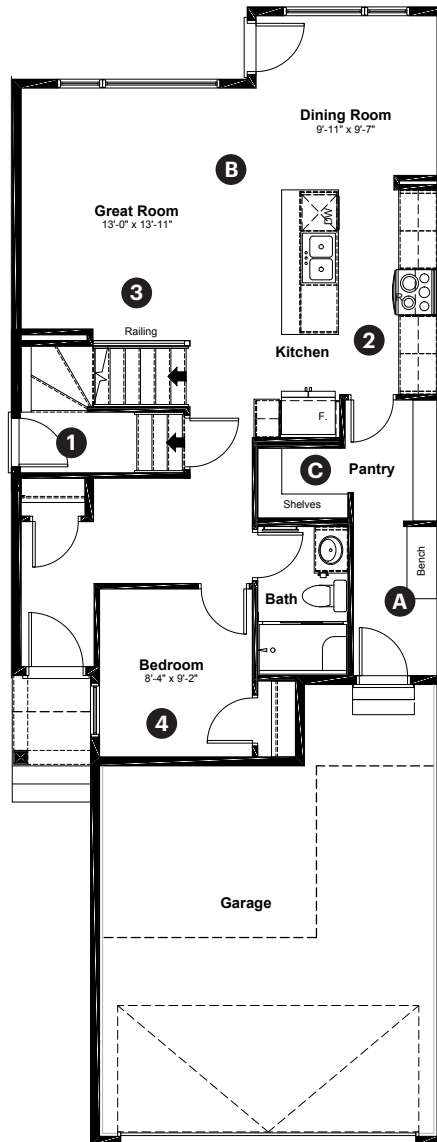
17908 63 Street NW
Edmonton, AB

1,961 sq ft
3+1 bedrooms
3 bathrooms

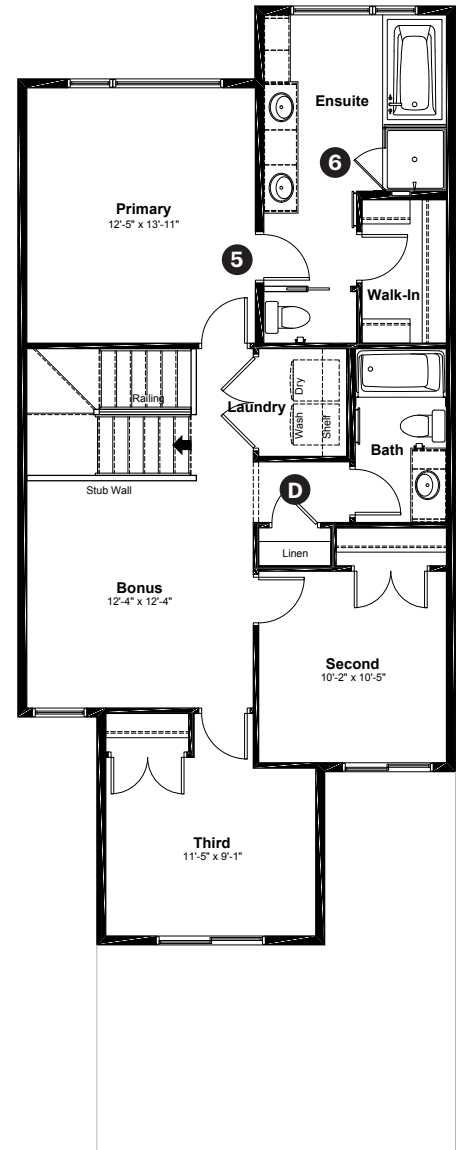
Prairie
Elevation

Anthem

Main Floor: 899 sq ft



Upper Floor: 1,062 sq ft



Quick Possession Home Options

- 1 Side entrance
- 2 Level 2 kitchen cabinet layout
- 3 Main floor railing
- 4 Main floor bedroom with full bathroom
- 5 Primary ensuite option 1
- 6 Tiled walls with niche in ensuite shower

Quick Possession Home Highlights

- A Built-in bench in mudroom
- B 9' high main floor ceilings
- C Large pantry
- D Large upstairs linen closet

Dimensions, sizes, specifications, layouts and materials are approximate only and subject to change without notice. The builder reserves the right to make change and modifications to the information contained herein. E.&O.E.

Front Drive 110

Quick
Possession

McConachie
HEIGHTS

17908 63 Street NW
Edmonton, AB

1,961 sq ft
3+1 bedrooms
3 bathrooms

Prairie
Elevation

Anthem



Features

Anthem Construction Standards

- Low maintenance architectural asphalt shingles
- Anthem maximizes window coverage on every home to provide your home with natural light.
- Windows are also triple plane low-E argon filled windows above grade
- Includes a 50-gallon gas water tank and 96% high-efficient gas furnace with dual-stage with variable speeds. It also has an integrated HRV system with dedicated pick-up locations in each bathroom with timers for easy use
- Decora type switches throughout the home
- R-50 blown insulation in all attic spaces
- Rough-in waterline to fridge

The Interior

- Ceilings are finished with a splatter texture
- Luxury vinyl plank flooring on main floor
- Luxury vinyl tile flooring in upper bathrooms and laundry
- Carpet on finished stairs and upstairs with an 8lb underlay
- Quartz countertops in kitchen and bathrooms
- Undermount stainless steel kitchen
- Undermount bathroom sinks
- Handshower in main floor bathroom
- Stainless steel appliance package including a chimney hoodfan and built in microwave

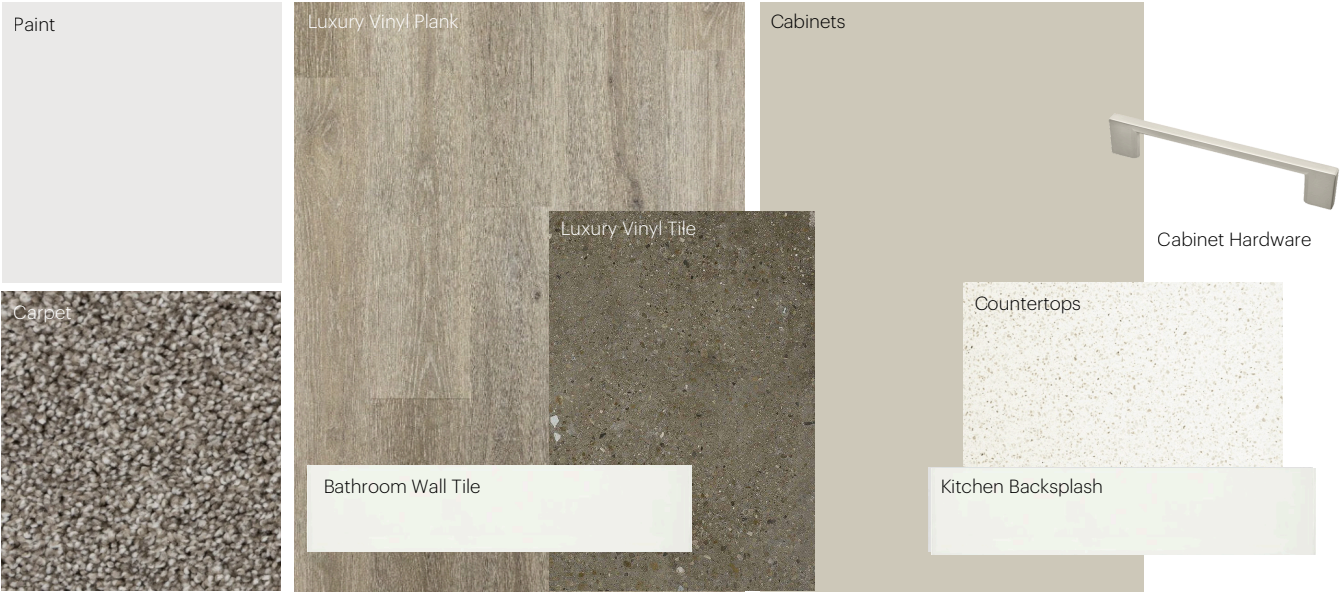
Dimensions, sizes, specifications, layouts and materials are approximate only and subject to change without notice. The builder reserves the right to make change and modifications to the information contained herein. E.&O.E.

Front Drive 110

Anthem Home Palette Selections

Model: Front Drive 110
 Address: 17908 63 Street NW, Edmonton AB

Cabinets, Flooring and Countertops



Plumbing



Finishing



Anthem Home Palette Selections

Model: Front Drive 110
 Address: 17908 63 Street NW, Edmonton AB

Lighting



Dining Room



Island Pendant



Stairwell



Bedrooms




Halls / Closets



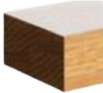
Bathrooms

*Number of lights determined by size of vanity

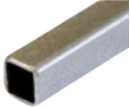
Railing




Spindle Pattern



Handrail



Iron Color



Post

* Handrail, post and cap painted to match the trim color

Appliances



Fridge



Chimney Hoodfan



Stove



Built in microwave



Dishwasher

