

Quick  
Possession

McConachie  
HEIGHTS

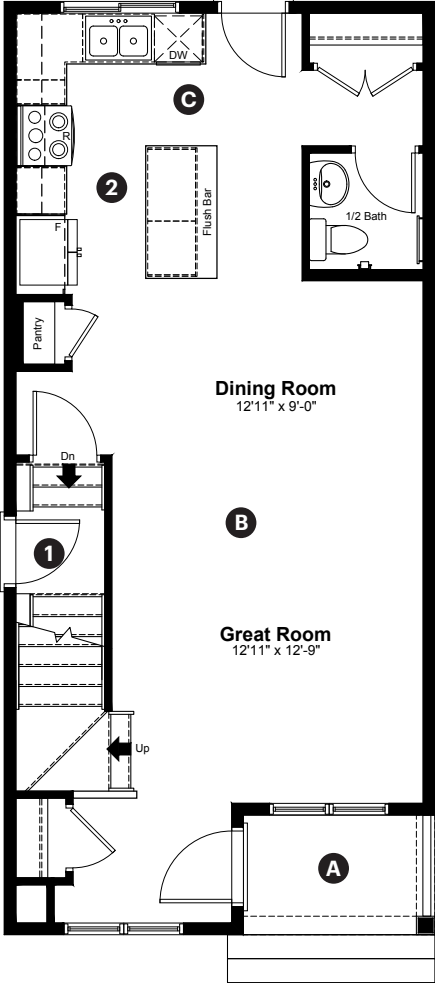
17552 63 Street  
Edmonton, AB

1,364 sq ft  
3 bedrooms  
2.5 bathrooms

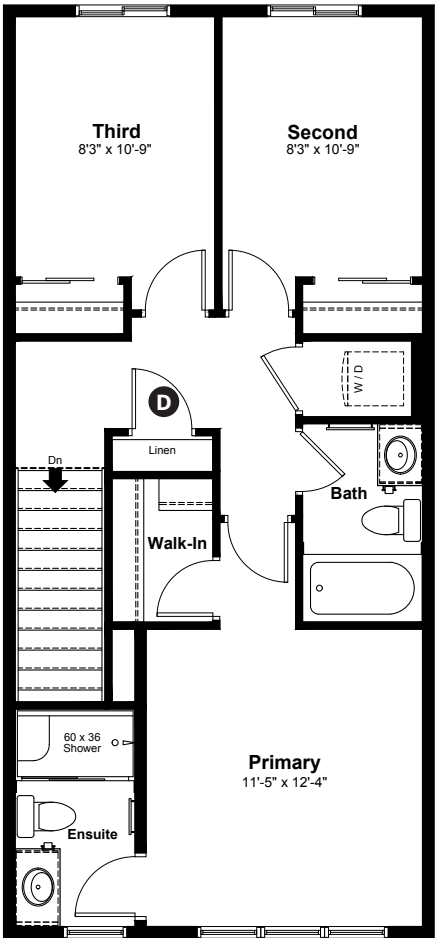
Craftsman  
Elevation



Main Floor: 662 sq ft



Upper Floor: 702 sq ft



Quick Possession Home Options

- 1 Side entrance
- 2 Level 2 kitchen cabinet layout

Quick Possession Home Highlights

- A Front porch
- B 9' high main floor ceilings
- C Rear kitchen
- D Upstairs linen closet

Laned 150

Dimensions, sizes, specifications, layouts and materials are approximate only and subject to change without notice. The builder reserves the right to make change and modifications to the information contained herein. E.&O.E.

Quick  
Possession

*McConachie*  
HEIGHTS

17552 63 Street  
Edmonton, AB

1,364 sq ft  
3 bedrooms  
2.5 bathrooms

Craftsman  
Elevation

**Anthem** 



## Features

### Anthem Construction Standards

- Low maintenance architectural asphalt shingles
- Anthem maximizes window coverage on every home to provide your home with natural light. Windows are also triple plane low-E argon filled windows above grade
- Includes an 50-gallon gas hot water tank and 96% high-efficient gas furnace with dual-stage with variable speeds. It also has an integrated HRV system with dedicated pick-up locations in each bathroom with timers for easy use
- Decora type switches throughout the home
- R-50 blown insulation in all attic spaces
- Rough-in waterline to the fridge

### The Interior

- Ceilings are finished with a splatter texture
- Luxury vinyl plank flooring on main floor
- Luxury vinyl tile flooring in upper bathrooms and laundry
- Carpet on finished stairs and upstairs with an 8lb underlay
- 2 CM quartz countertops in kitchen and bathrooms
- Undermount stainless steel kitchen sink
- Undermount bathroom sinks
- Stainless steel appliance package
- 9' high basement foundation
- Rough-ins added for future basement suite development

Dimensions, sizes, specifications, layouts and materials are approximate only and subject to change without notice. The builder reserves the right to make change and modifications to the information contained herein. E.&O.E.

Laned 150

# Anthem Home Palette Selections

**Model:** Laned 150
**Address:** 17552 63 Street, Edmonton AB

## Cabinets, Flooring and Countertops

Wall Paint

Trim Paint

Carpet

Luxury Vinyl Plank

Luxury Vinyl Plank

Bathroom Wall Tile

Cabinets

Cabinet Hardware

Countertops

Kitchen Backsplash

## Plumbing

Kitchen Sink

Kitchen Faucet

Bathroom Faucet

Pedestal Sink

Bathroom Sink

Tub / Shower Faucet

Pedestal Sink  
 \*faucet shown is not included

## Finishing

Deadbolt

Interior Door Knob

Bathroom Accessories

Interior Doors

# Anthem Home Palette Selections

**Model:** Laned 150
 **Address:** 17552 63 Street, Edmonton AB

## Lighting



Dining Room



Island Pendant



Bathrooms  
 \*Number of lights determined by size of vanity



Bedrooms

## Appliances



Fridge



Electric Range



Dishwasher



OTR Microwave

