

Quick Possession



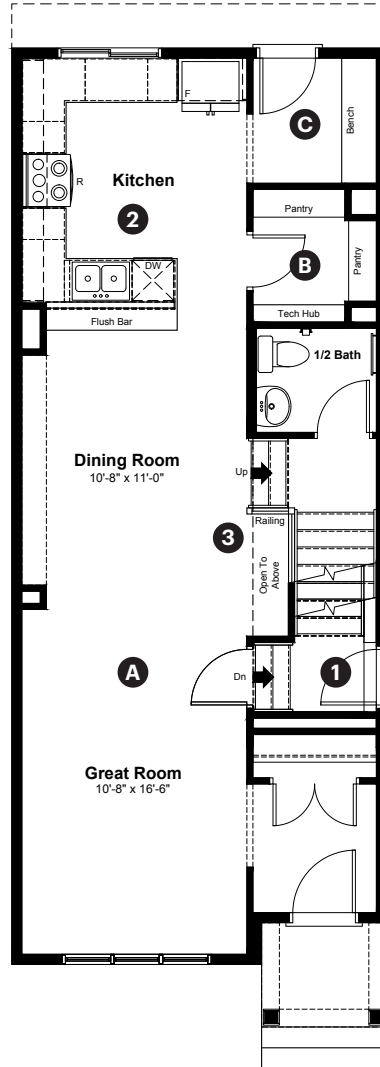
Kinglet
BY BIG LAKE

3892 Wren Crescent
Edmonton, AB

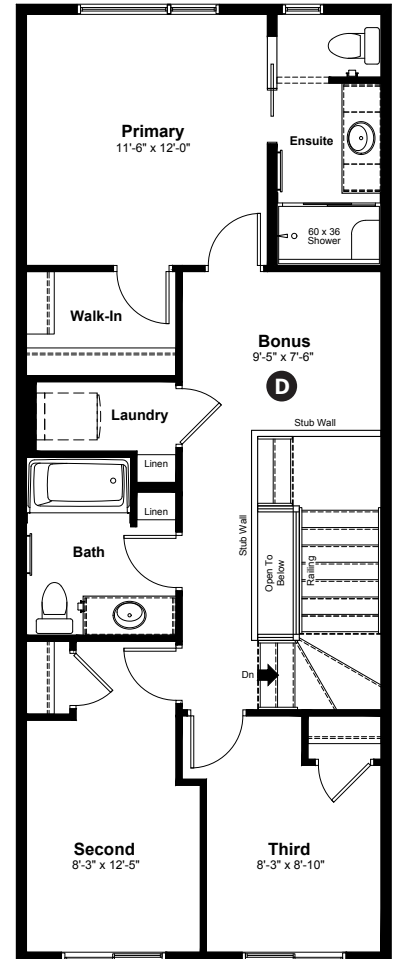
1,598 sq ft
3 bedrooms
2.5 bathrooms

Craftsman Elevation

Main Floor: 780 sq ft



Upper Floor: 818 sq ft



Quick Possession Home Options

- 1** Side entrance
- 2** Level 2 kitchen cabinet layout
- 3** Main floor railing

Quick Possession Home Highlights

- A** 9' high main floor ceilings
- B** Spacious pantry
- C** Built in bench
- D** Upstairs bonus room

Laned 180

Dimensions, sizes, specifications, layouts and materials are approximate only and subject to change without notice. The builder reserves the right to make change and modifications to the information contained herein. E.&O.E.

Quick
Possession

Anthem 

Kinglet
BY BIG LAKE

**3892 Wren Crescent
Edmonton, AB**

1,598 sq ft
3 bedrooms
2.5 bathrooms

Craftsman Elevation



Features

Anthem Construction Standards

- Low maintenance architectural asphalt shingles
- Anthem maximizes window coverage on every home to provide your home with natural light . Windows are also triple plane low-E argon filled windows above grade
- Includes a 50-gallon gas water tank and 96% high-efficient gas furnace with dual-stage with variable speeds. It also has an integrated HRV system with dedicated pick-up locations in each bathroom with timers for easy use
- Decora type switches throughout home
- R-50 blown insulation in all attic spaces
- Rough-in waterline to the fridge

The Interior

- Ceilings are finished with a knockdown ceiling texture
- Luxury vinyl plank flooring on main floor
- Luxury vinyl tile flooring in upper bathrooms and laundry
- Carpet on finished stairs and upstairs with an 8lb underlay
- Secondary cabinet color
- 2 CM quartz countertops in kitchen and bathrooms
- Undermount stainless steel kitchen sink
- Undermount bathroom sinks in upstairs bathrooms
- Stainless steel appliance package
- Upgraded light fixture in dining room
- Railing with iron spindles on main floor stairwell
- 9' high basement foundation
- 150 amp electrical panel

Dimensions, sizes, specifications, layouts and materials are approximate only and subject to change without notice. The builder reserves the right to make change and modifications to the information contained herein. E.&O.E.

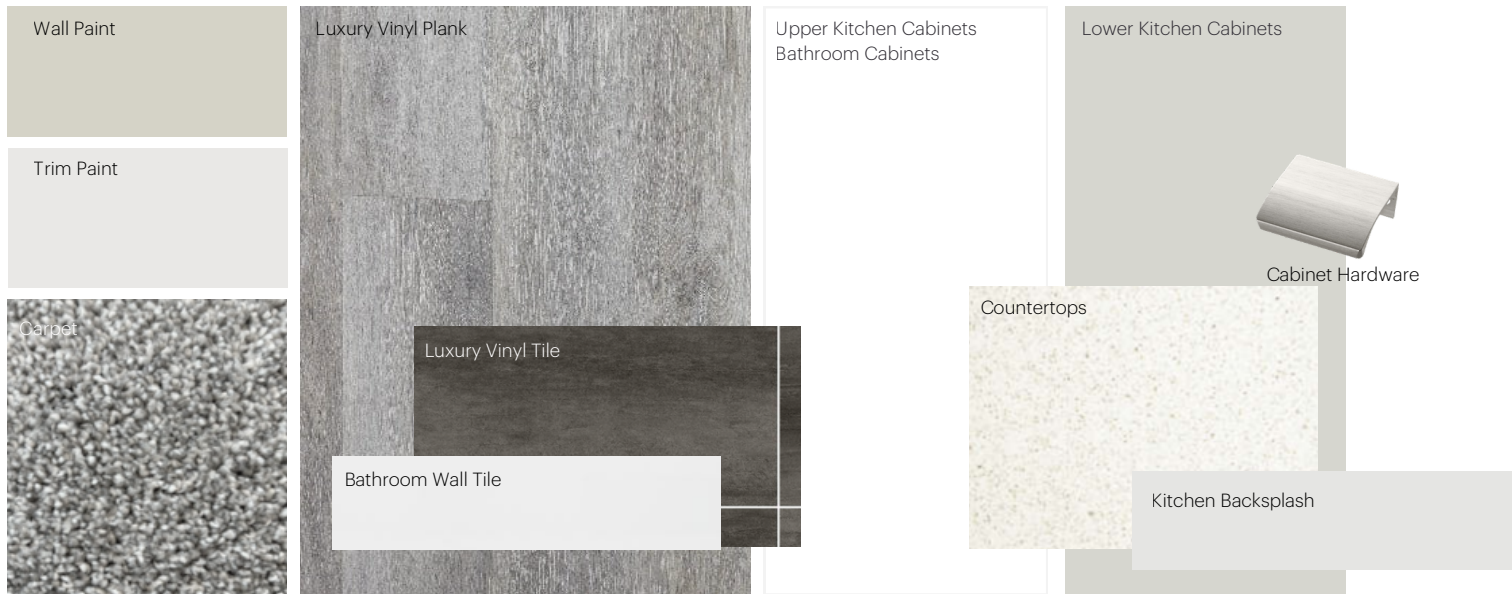
Laned 180

Anthem Home Palette Selections

Model: Laned 180

Address: 3892 Wren Crescent NW, Edmonton AB

Cabinets, Flooring and Countertops



Plumbing



Kitchen Sink



Kitchen Faucet



Pedestal Sink
*faucet shown is not included



Bathroom Sink



Bathroom Faucet



Tub / Shower Faucet

Finishing



Interior Door Knob



Bathroom Accessories



Interior Doors



Anthem Home Palette Selections

Model: Laned 180

Address: 3892 Wren Crescent NW, Edmonton AB

Lighting



Dining Room



Island Pendant



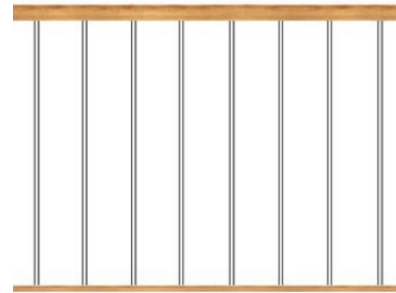
Bathrooms

*Number of lights determined by size of vanity



Bedrooms

Railing



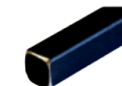
Spindle Pattern



Post Cap



Handrail



Iron Color

Post

* Handrail, post and cap painted to match the trim color

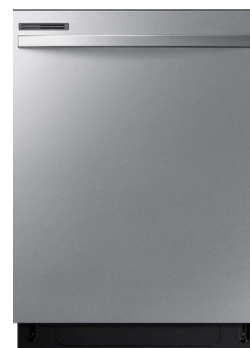
Appliances



Fridge



Electric Range



Dishwasher



OTR Microwave

