

Quick
Possession



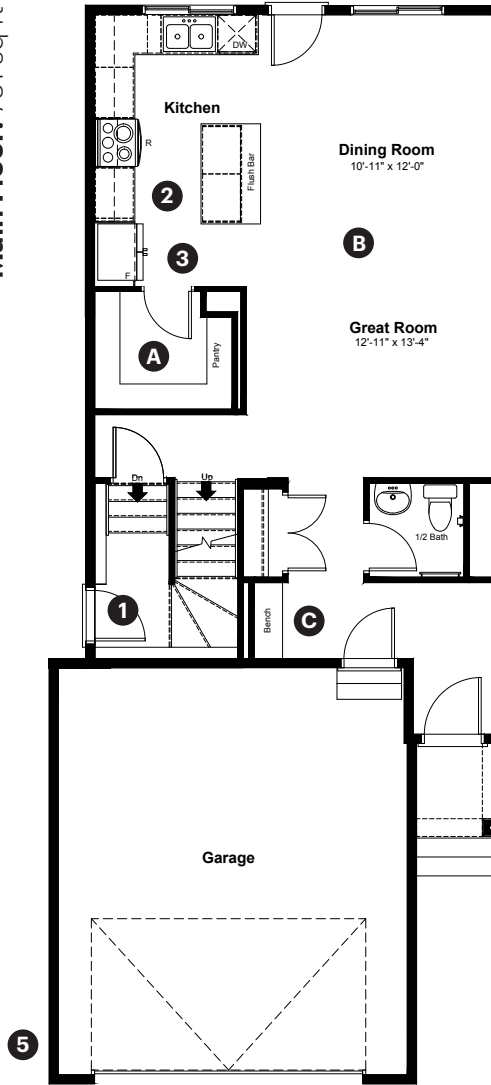
Kinglet
BY BIG LAKE

3972 Wren Loop NW
Edmonton, AB

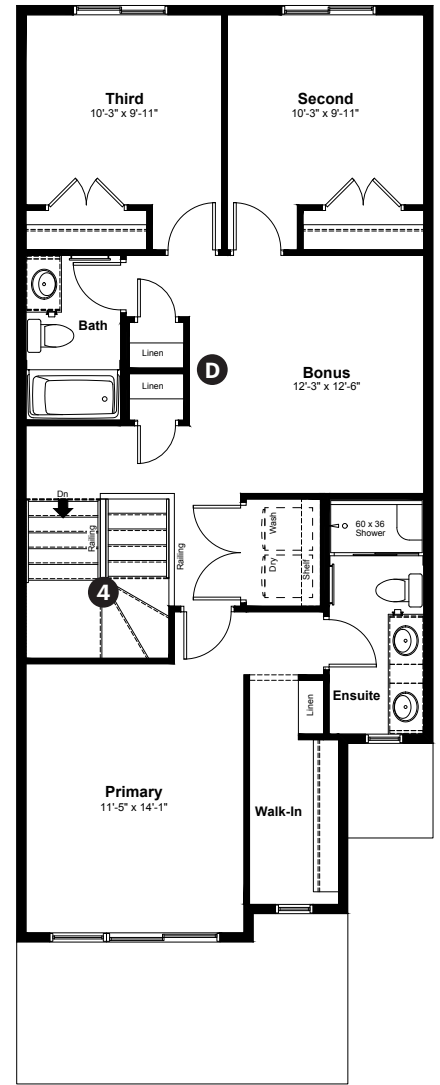
1,825 sq ft
3 bedrooms
2.5 bathrooms

Prairie Elevation

Main Floor: 791 sq ft



Upper Floor: 1,034 sq ft



Quick Possession Home Options

- 1 Side entrance
- 2 Kitchen option 1
- 3 Level 2 kitchen cabinet layout
- 4 Main and upper floor railing
- 5 Garage widened by 2'

Quick Possession Home Highlights

- A Large pantry
- B 9' high main floor ceilings
- C Built in bench
- D Double linen closets

Dimensions, sizes, specifications, layouts and materials are approximate only and subject to change without notice. The builder reserves the right to make change and modifications to the information contained herein. E.&O.E.

Front Drive 200

Quick
Possession

Anthem 

Kinglet
BY BIG LAKE

**3972 Wren Loop NW
Edmonton, AB**

1,825 sq ft
3 bedrooms
2.5 bathrooms

Prairie Elevation



Features

Anthem Construction Standards

- Low maintenance architectural asphalt shingles
- Anthem maximizes window coverage on every home to provide your home with natural light. Windows are also triple plane low-E argon filled windows above grade
- Includes a 50-gallon gas water tank and 96% high-efficient gas furnace with dual-stage with variable speeds. It also has an integrated HRV system with dedicated pick-up locations in each bathroom with timers for easy use
- Decora type switches throughout the home
- R-50 blown insulation in all attic spaces
- Rough-in waterline to the fridge

The Interior

- Ceilings are finished with a splatter texture
- Luxury vinyl plank flooring on main floor
- Luxury vinyl tile flooring in upper bathrooms and laundry
- Carpet on finished stairs and upstairs with an 8lb underlay
- Secondary cabinet color
- Elevated level 3CM quartz countertops in kitchen and bathrooms
- Undermount stainless steel kitchen sink
- Undermount bathroom sinks
- Elevated level kitchen backsplash
- Elevated level interior door hardware selections
- Stainless steel appliance package including a chimney hoodfan
- Upgraded chandelier in dining room
- Upgraded island pendant lights in kitchen

Dimensions, sizes, specifications, layouts and materials are approximate only and subject to change without notice. The builder reserves the right to make change and modifications to the information contained herein. E.&O.E.

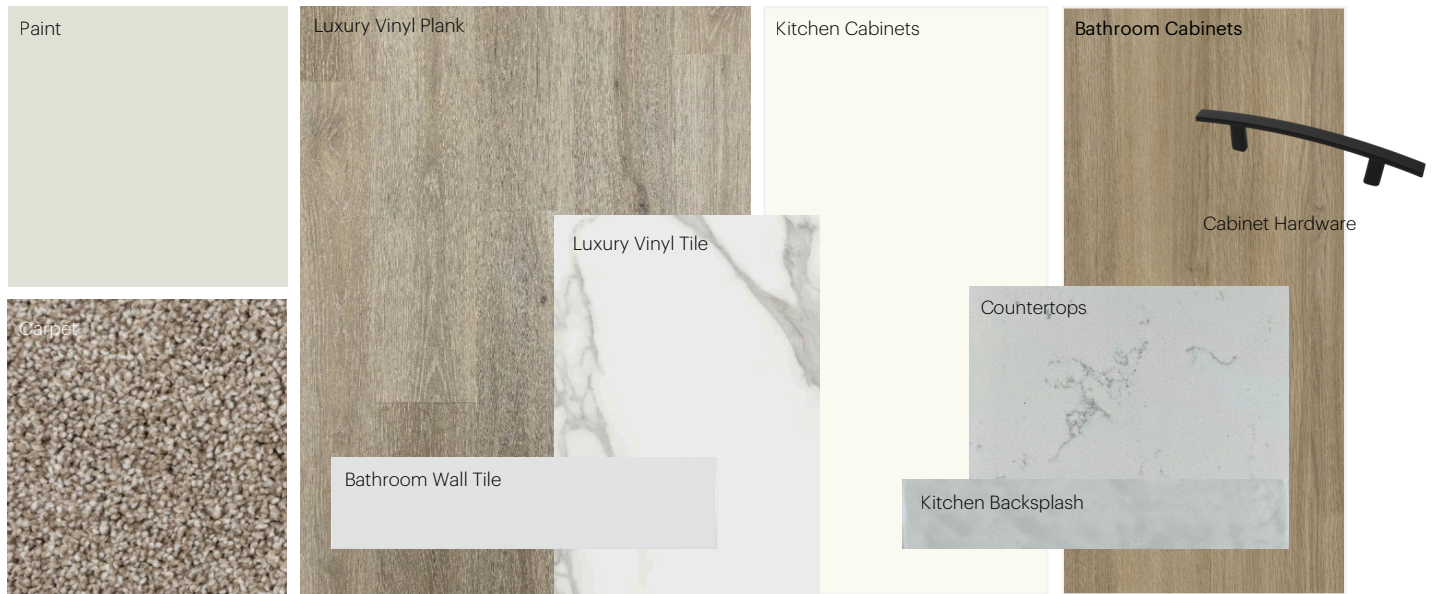
Front Drive 200

Anthem Home Palette Selections

Model: Front Drive 200

Address: 3972 Wren Loop, Edmonton AB

Cabinets, Flooring and Countertops



Plumbing



Finishing



Anthem Home Palette Selections

Model: Front Drive 200

Address: 3972 Wren Loop, Edmonton AB

Lighting



Dining Room



Island Pendants



Stairwell



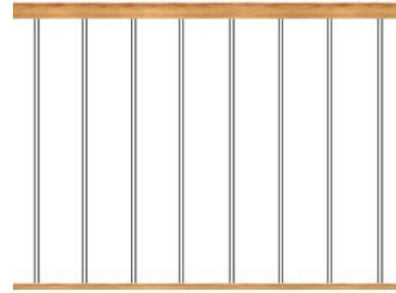
Bathrooms

*Number of lights determined by size of vanity



Bedrooms

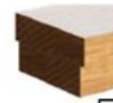
Railing



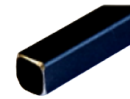
Spindle Pattern



Post Cap



Handrail



Iron Color

Post

* Handrail, post and cap painted to match the trim color

Appliances



Fridge



Chimney Hoodfan



Electric Range



Dishwasher



Microwave

