

Quick
Possession

Kinglet
BY BIG LAKE

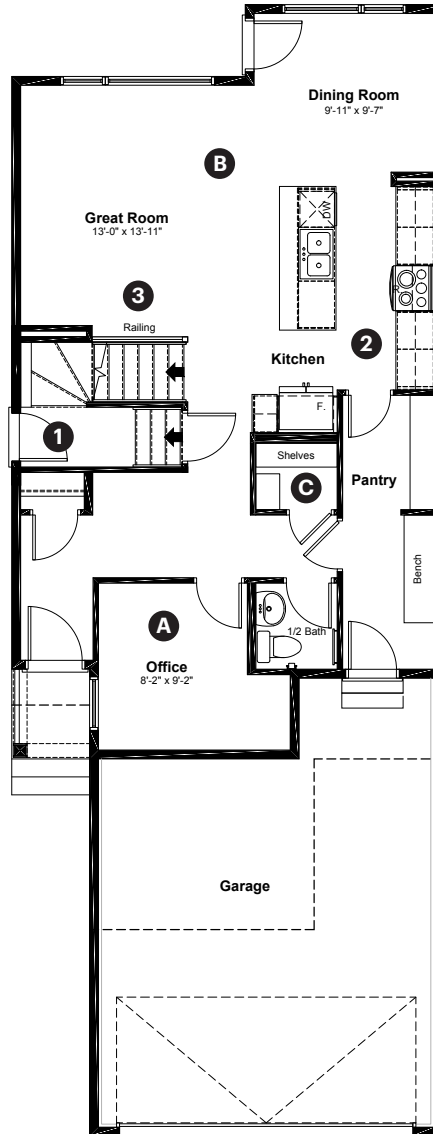
3970 Wren Loop NW
Edmonton, AB

1,961 sq ft
3 bedrooms
2.5 bathrooms

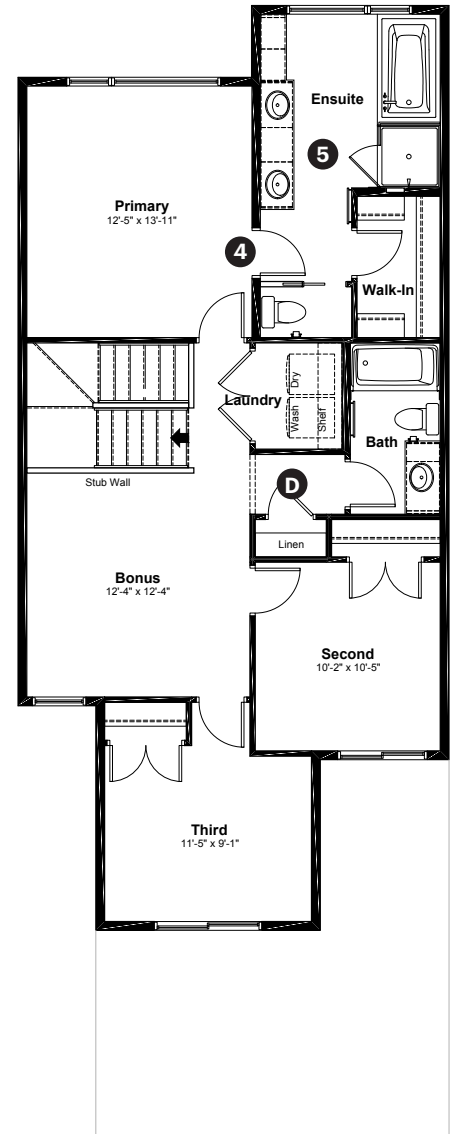
Prairie Elevation

Anthem

Main Floor: 899 sq ft



Upper Floor: 1,062 sq ft



Quick Possession Home Options

- 1 Side entrance
- 2 Level 2 kitchen cabinet layout
- 3 Main floor railing
- 4 Primary ensuite option 1
- 5 Tiled walls with niche in ensuite shower

Quick Possession Home Highlights

- A Main floor office with window
- B 9' high main floor ceilings
- C Oversized main floor closet
- D Large upstairs linen closet

Dimensions, sizes, specifications, layouts and materials are approximate only and subject to change without notice. The builder reserves the right to make change and modifications to the information contained herein. E.&O.E.

Front Drive 110

Quick
Possession

Kinglet
BY BIG LAKE

**3970 Wren Loop NW
Edmonton, AB**

1,961 sq ft
3 bedrooms
2.5 bathrooms

Prairie Elevation

Anthem



Features

Anthem Construction Standards

- Low maintenance architectural asphalt shingles
- Anthem maximizes window coverage on every home to provide your home with natural light
- Windows are also triple plane low-E argon filled windows above grade
- Includes a 50 gallon gas water tank and 96% high-efficient gas furnace with dual-stage with variable speeds. It also has an integrated HRV system with dedicated pick up locations in each bathroom with timers for easy use
- Decora type switches throughout the home
- R-50 blown insulation in all attic spaces
- Rough-in waterline to the fridge

The Interior

- Ceilings are finished with a splatter texture
- Luxury vinyl plank flooring on main floor
- Luxury vinyl tile flooring in upper bathrooms and laundry
- Carpet on finished stairs and upstairs with an 8lb underlay
- Secondary cabinet color
- Quartz countertops in kitchen and bathrooms
- Elevated level kitchen backplash tile
- Undermount stainless steel kitchen
- Undermount bathroom sinks
- Stainless steel appliance package including a chimney hoodfan and built in microwave
- Black matte lighting package with upgraded pendant lights over island
- 9' high foundation

Dimensions, sizes, specifications, layouts and materials are approximate only and subject to change without notice. The builder reserves the right to make change and modifications to the information contained herein. E.&O.E.

Front Drive 110

Anthem Home Palette Selections

Model: Front Drive 110 **Address:** 3970 Wren Loop NW, Edmonton AB

Cabinets, Flooring and Countertops

Paint

Carpet

Luxury Vinyl Plank

Luxury Vinyl Tile

Bathroom Wall Tile

Upper Cabinets

Lower Cabinets + Bathroom Vanities

Countertops

Kitchen Backsplash

Cabinet Hardware

Plumbing

Kitchen Sink

Pedestal Sink

Kitchen Faucet

Bathroom Faucet

Bathroom Sink

Tub / Shower Faucet

*faucet shown is not included

Finishing

Deadbolt

Interior Door Knob

Bathroom Accessories

Interior Doors



Anthem Home Palette Selections

Model: Front Drive 110
 Address: 3970 Wren Loop NW, Edmonton AB

Lighting



Dining Room



Island Pendants



Stairwell



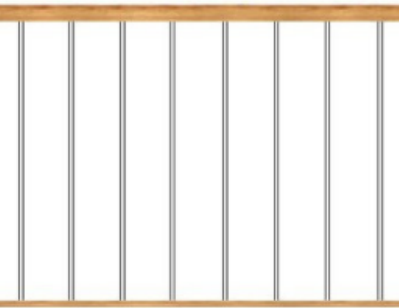
Bathrooms

*Number of lights determined by size of vanity

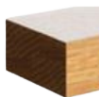


Bedrooms


Railing



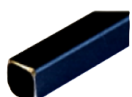
Spindle Pattern



Handrail



Iron Color



Post

* Handrail, post and cap painted to match the trim color

Appliances



Fridge



Chimney Hoodfan



Stove



Dishwasher



Built in Microwave

