

Quick Possession

GLENRIDDING RAVINE

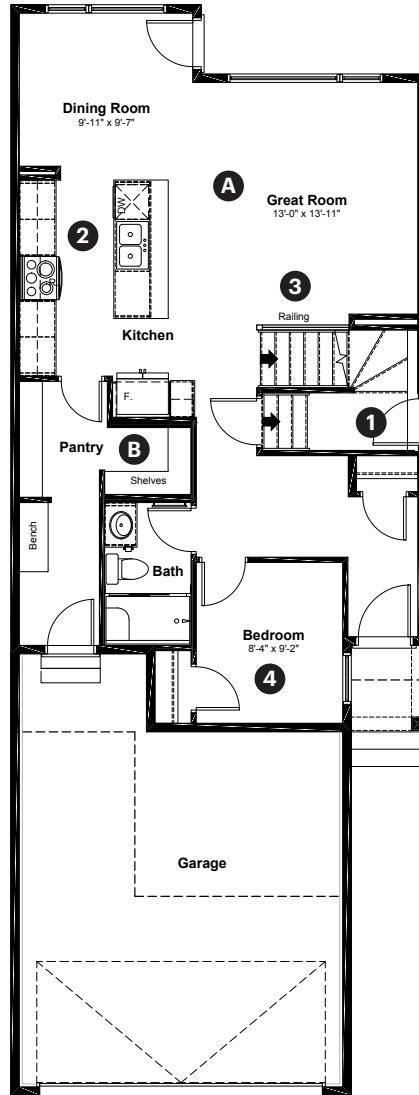
2312 160 Street SW
Edmonton, AB

1,961 sq ft
4 bedrooms
3 bathrooms

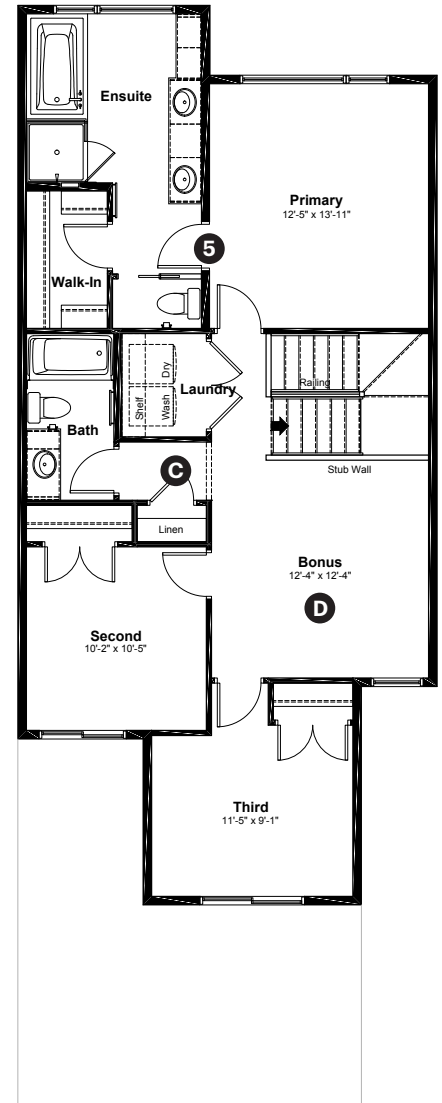
Prairie Elevation

Anthem

Main Floor: 899 sq ft



Upper Floor: 1,062 sq ft



Quick Possession Home Options

- 1 Side entrance
- 2 Level 2 kitchen cabinet layout
- 3 Main floor railing
- 4 Main floor bedroom option
- 5 Primary ensuite option

Quick Possession Home Highlights

- A 9' high main floor ceilings
- B Walk-in pantry
- C Large upstairs linen closet
- D Upstairs bonus room

Dimensions, sizes, specifications, layouts and materials are approximate only and subject to change without notice. The builder reserves the right to make change and modifications to the information contained herein. E.&O.E.

Front Drive 110

Quick
Possession

G GLENRIDDING
RAVINE

**2312 160 Street SW
Edmonton, AB**

1,961 sq ft
4 bedrooms
3 bathrooms

Prairie Elevation

Anthem 



Features

Anthem Construction Standards

- Low maintenance architectural asphalt shingles
- Anthem maximizes window coverage on every home to provide your home with natural light. Windows are also triple plane low-E argon filled windows above grade
- Includes a 50-gallon gas water tank and 96% high-efficient gas furnace with dual-stage with variable speeds. It also has an integrated HRV system with dedicated pick-up locations in each bathroom with timers for easy use
- Decora type switches throughout the home
- R-50 blown insulation in all attic spaces
- Rough-in waterline to the fridge

The Interior

- Ceilings are finished with a splatter texture
- Upgraded luxury vinyl plank flooring on main floor
- Luxury vinyl tile flooring in upper bathrooms and laundry
- Carpet on finished stairs and upstairs with an 8lb underlay
- Upgraded cabinetry package including secondary cabinet color and upgraded cabinet hardware in kitchen and bathroom
- Upgraded kitchen faucet
- Upgraded 3 CM Quartz countertops in kitchen and bathrooms
- Upgraded undermount silgranit kitchen sink
- Upgraded kitchen backsplash
- Upgraded dining light fixture
- Undermount bathroom sinks
- Stainless steel appliance package including a chimney hoodfan
- Railing with iron spindles on main floor stairwell
- Upgraded door hardware throughout home

Dimensions, sizes, specifications, layouts and materials are approximate only and subject to change without notice. The builder reserves the right to make change and modifications to the information contained herein. E.&O.E.

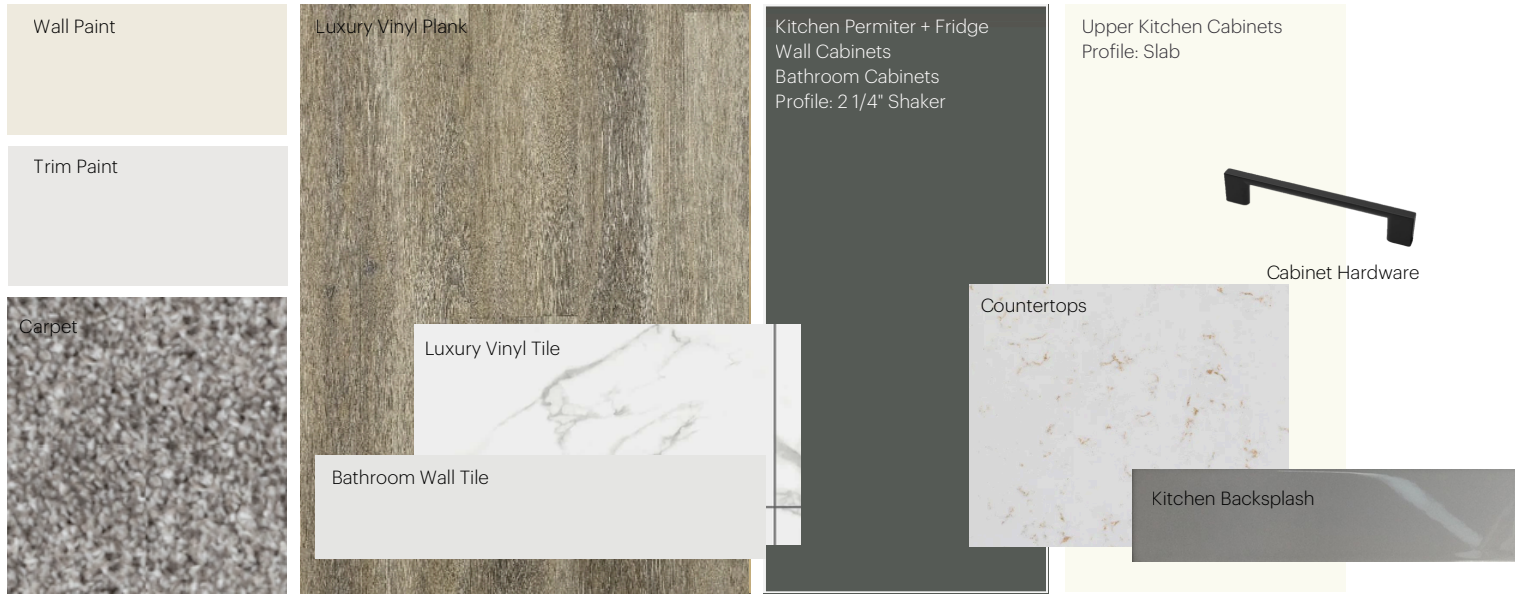
Front Drive 110

Anthem Home Palette Selections

Model: Front Drive 110

Address: 2312 160 Street SW, Edmonton AB

Cabinets, Flooring and Countertops



Plumbing



Kitchen Sink



Bathroom Sink



Bathroom Faucet



Kitchen Faucet



Tub / Shower Faucet

Finishing



Exterior Handleset



Interior Door Lever



Bathroom Accessories



Interior Doors



Anthem Home Palette Selections

Model: Front Drive 110

Address: 2312 160 Street SW, Edmonton AB

Lighting



Dining Room



Island Pendant



Stairwell



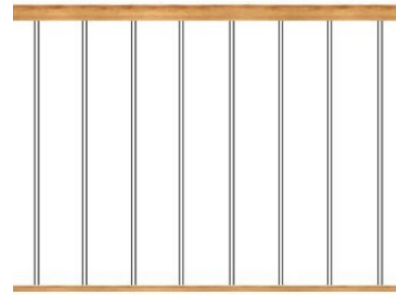
Bathrooms

*Number of lights determined by size of vanity



Bedrooms

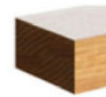
Railing



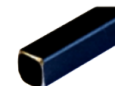
Spindle Pattern



Post Cap



Handrail



Iron Color

Post

* Handrail, post and cap painted to match the trim color

Appliances



Fridge



Chimney Hoodfan



Electric Range



Dishwasher



Microwave

