

Quick Possession

GLENRIDDING RAVINE

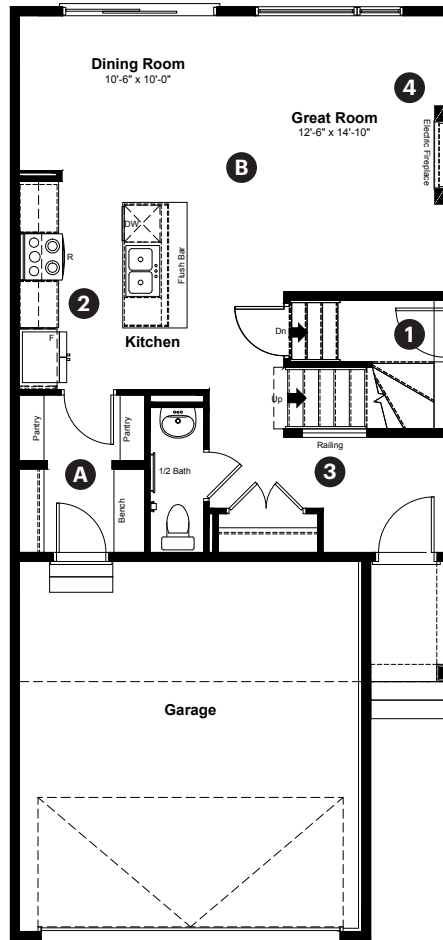
2340 160 Street SW
Edmonton, AB

1,596 sq ft
3 bedrooms
2.5 bathrooms

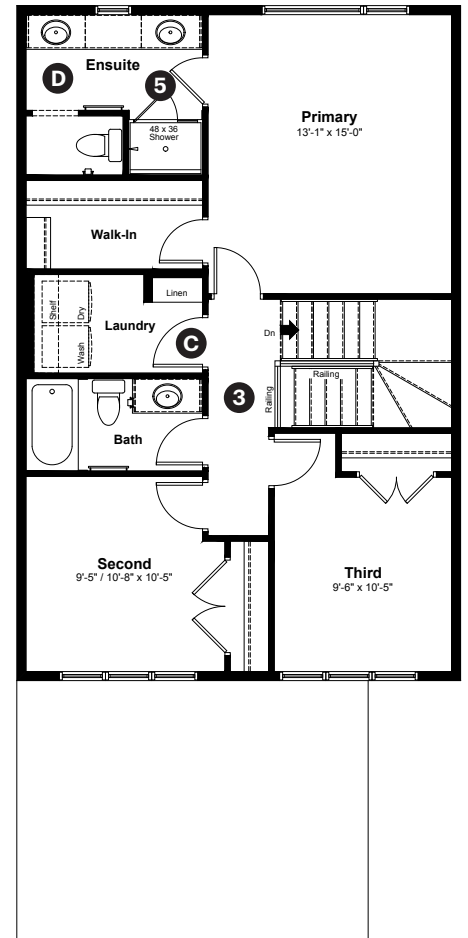
Prairie Elevation

Anthem

Main Floor: 720 sq ft



Upper Floor: 876 sq ft



Quick Possession Home Options

- 1 Side entrance
- 2 Level 2 kitchen cabinet layout
- 3 Main and upper floor railing
- 4 Electric fireplace with mantel
- 5 Tiled walls in ensuite shower

Quick Possession Home Highlights

- A Walk through pantry
- B 9' high main floor ceilings
- C Spacious laundry room
- D Double sinks in ensuite

Dimensions, sizes, specifications, layouts and materials are approximate only and subject to change without notice. The builder reserves the right to make change and modifications to the information contained herein. E.&O.E.

Front Drive 190

Quick
Possession

G GLENRIDDING
RAVINE

**2340 160 Street SW
Edmonton, AB**

1,596 sq ft
3 bedrooms
2.5 bathrooms

Prairie Elevation

Anthem 



Features

Anthem Construction Standards

- Low maintenance architectural asphalt shingles
- Anthem maximizes window coverage on every home to provide your home with natural light. Windows are also triple plane low-E argon filled windows above grade
- Includes a 50-gallon gas water tank and 96% high-efficient gas furnace with dual-stage with variable speeds. It also has an integrated HRV system with dedicated pick-up locations in each bathroom with timers for easy use
- Decora type switches throughout the home
- R-50 blown insulation in all attic spaces
- Rough-in waterline to the fridge

The Interior

- Ceilings are finished with a splatter texture
- Luxury vinyl plank flooring on main floor
- Executive level ceramic tile flooring in upper bathrooms and laundry
- Carpet on finished stairs and upstairs with an 8lb underlay
- Secondary cabinet color
- Executive level 3 CM quartz countertops in kitchen and bathrooms
- Upgraded kitchen faucet
- Undermount silgranit kitchen sink
- Elevated level kitchen backsplash
- Elevated level bathroom hardware package
- Undermount bathroom sinks
- Stainless steel appliance package including a chimney hoodfan and built in microwave
- Iron railing on main and upper floor stairwell
- Upgraded island pendant lights and chandelier in dining room

Dimensions, sizes, specifications, layouts and materials are approximate only and subject to change without notice. The builder reserves the right to make change and modifications to the information contained herein. E.&O.E.

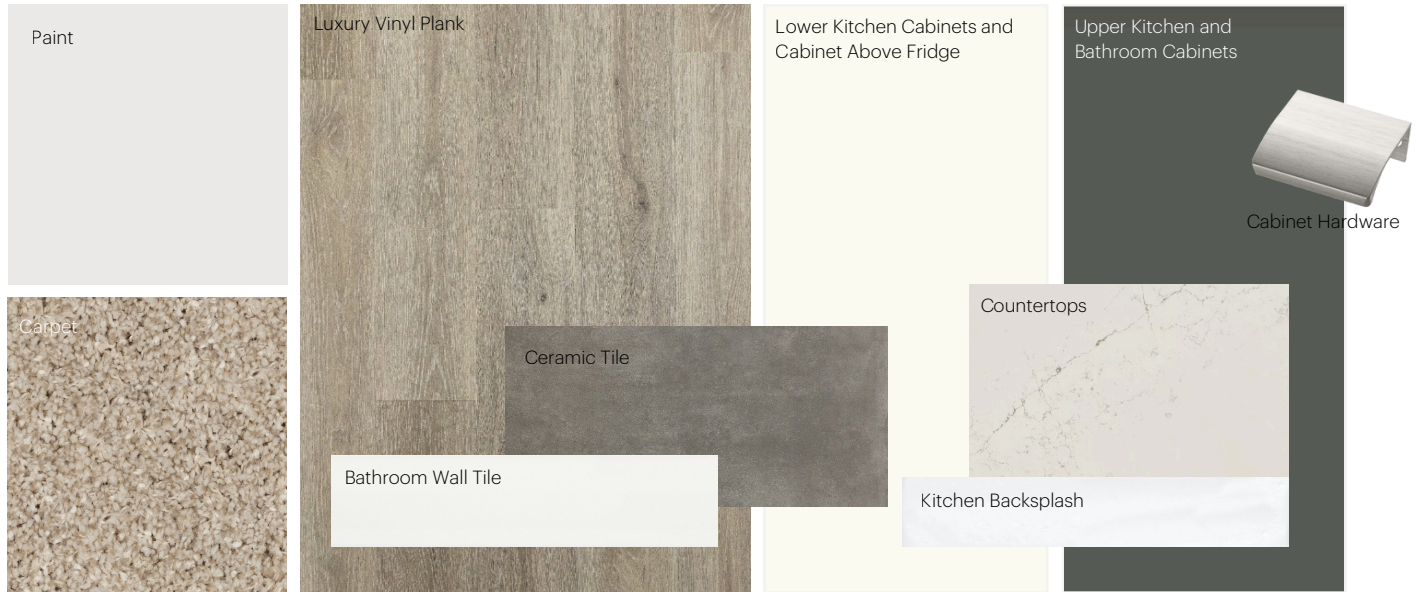
Front Drive 190

Anthem Home Palette Selections

Model: Front Drive 190

Address: 2340 160 Street, Edmonton AB

Cabinets, Flooring and Countertops



Plumbing



Kitchen Sink



Kitchen Faucet



Pedestal Sink
*faucet shown is not included



Bathroom Faucet



Bathroom Sink



Tub / Shower Faucet

Finishing



Deadbolt



Interior Door Knob



Bathroom Accessories



Interior Doors



Anthem Home Palette Selections

Model: Front Drive 190

Address: 2340 160 Street, Edmonton AB

Lighting



Dining Room



Island Pendants



Stairwell



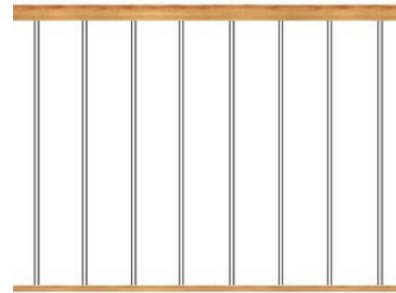
Bathrooms

*Number of lights determined by size of vanity



Bedrooms

Railing



Spindle Pattern



Post Cap



Handrail



Iron Color

Post

* Handrail, post and cap painted to match the trim color

Appliances



Fridge



Chimney Hoodfan



Electric Range



Dishwasher



Microwave

