

Quick  
Possession

**GLENRIDDING**  
RAVINE

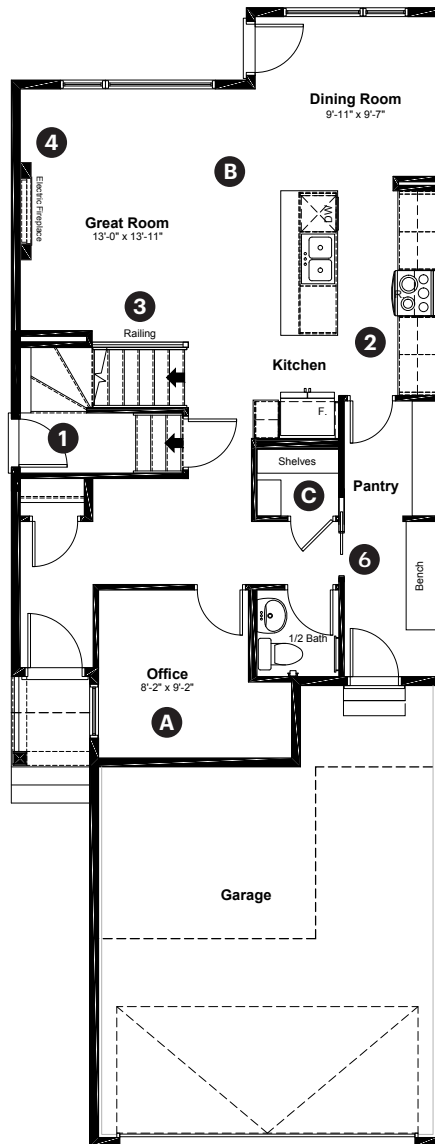
15851 27 Avenue SW  
Edmonton, AB

1,961 sq ft  
3 bedrooms  
2.5 bathrooms

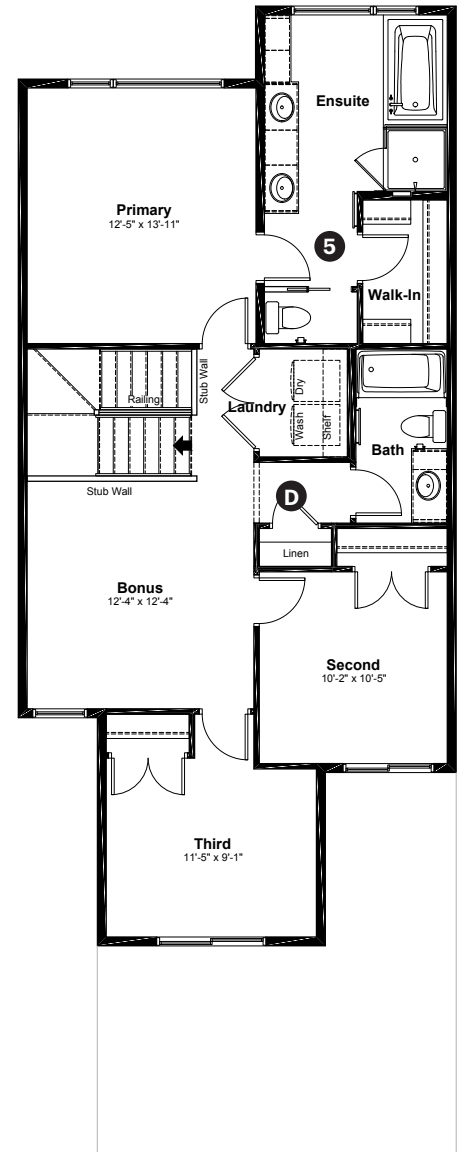
Prairie Elevation

**Anthem**

Main Floor: 899 sq ft



Upper Floor: 1,062 sq ft



#### Quick Possession Home Options

- 1 Side entrance
- 2 Level 2 kitchen cabinet layout
- 3 Main floor spindle railing
- 4 Electric fireplace with tile to mantle
- 5 Primary ensuite option 1
- 6 Pocket door to mudroom

#### Quick Possession Home Highlights

- A Main floor office with a window
- B 9' high main floor ceilings
- C Oversized main floor closet
- D Large upstairs linen closet

Dimensions, sizes, specifications, layouts and materials are approximate only and subject to change without notice. The builder reserves the right to make change and modifications to the information contained herein. E.&O.E.

Front Drive 110

Quick  
Possession



15851 27 Avenue SW  
Edmonton, AB

1,961 sq ft  
3 bedrooms  
2.5 bathrooms

Prairie Elevation



## Features

### Anthem Construction Standards

- Low maintenance architectural asphalt shingles
- Anthem maximizes window coverage on every home to provide your home with natural light.
- Windows are also triple plane low-E argon filled windows above grade
- Includes a 50-gallon gas water tank and 96% high-efficient gas furnace with dual-stage with variable speeds. It also has an integrated HRV system with dedicated pick-up locations in each bathroom with timers for easy use
- Decora type switches throughout the home
- R-50 blown insulation in all attic spaces
- Rough-in waterline to the fridge

### The Interior

- Ceilings are finished with a splatter texture
- Luxury vinyl plank flooring on main floor
- Executive level ceramic tile flooring in upper bathrooms and laundry
- Carpet on finished stairs and upstairs with an 8lb underlay
- Elevated level quartz countertops in kitchen and bathrooms
- Elevated level kitchen backsplash selection
- Secondary cabinet color
- Undermount stainless steel kitchen
- Undermount bathroom sinks
- Elevated level interior door hardware package
- Elevated level bathroom faucet package
- Stainless steel appliance package including a chimney hoodfan and built in microwave
- Brushed nickel lighting package with upgraded pendant lights over the island
- Gas line added to the kitchen

Dimensions, sizes, specifications, layouts and materials are approximate only and subject to change without notice. The builder reserves the right to make change and modifications to the information contained herein. E.&O.E.

Front Drive 110

# Anthem Home Palette Selections

**Model:** Front Drive 110
 **Address:** 15851 27 Avenue, Edmonton AB

## Cabinets, Flooring and Countertops



## Plumbing



Kitchen Sink



Kitchen Faucet



Pedestal Sink  
\*faucet shown is not included



Bathroom Faucet



Tub / Shower Faucet



Bathroom Sink



Roman Tub Faucet

## Finishing



Deadbolt



Interior Door Lever



Bathroom Accessories



Interior Doors

# Anthem Home Palette Selections

**Model:** Front Drive 110
 **Address:** 15851 27 Avenue, Edmonton AB

## Lighting



Dining Room



Island Pendant



Stairwell



Bedrooms




Halls / Closets




Bathrooms

\*Number of lights determined by size of vanity

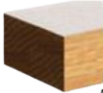
## Railing




Spindle Pattern




Post Cap



Handrail



Iron Color



Post

## Appliances



Fridge



Chimney Hoodfan



Stove



Built in microwave



Dishwasher

