

Quick  
Possession

**GLENRIDDING  
RAVINE**

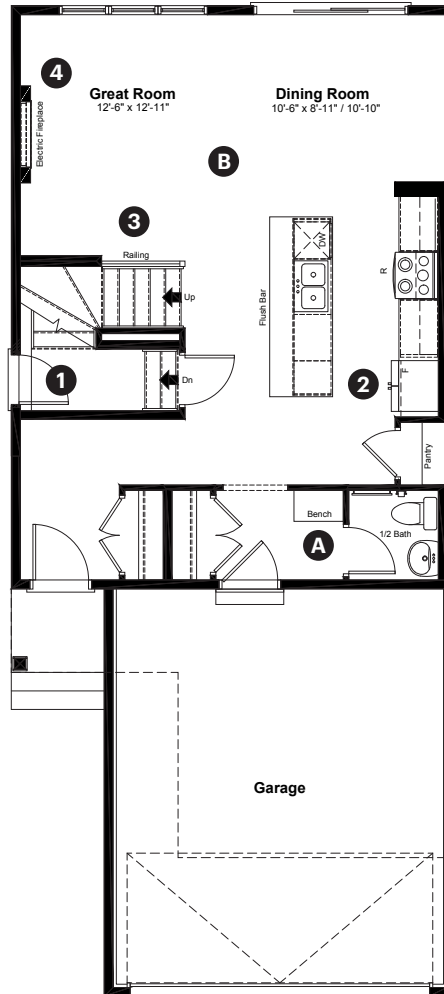
**15831 27 Avenue SW  
Edmonton, AB**

1,768 sq ft  
3 bedrooms  
2.5 bathrooms

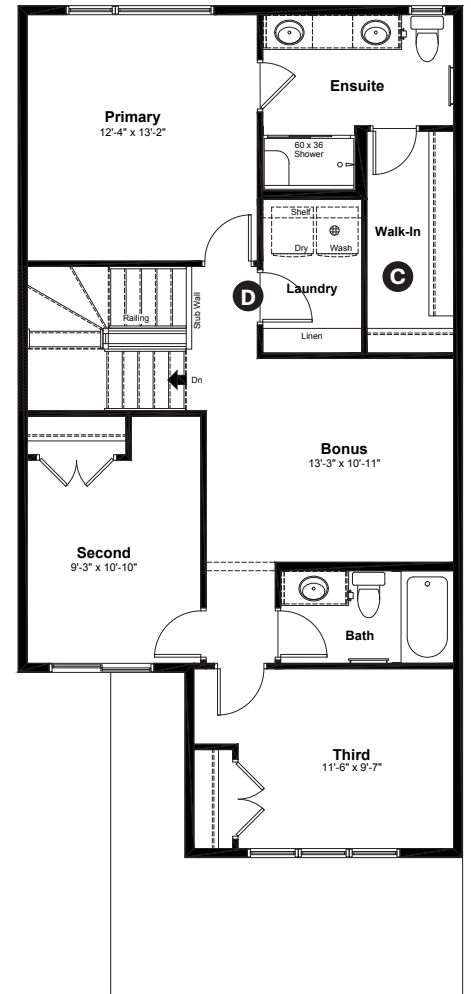
Craftsman Elevation

**Anthem**

**Main Floor: 756 sq ft**



**Upper Floor: 1,012 sq ft**



#### Quick Possession Home Options

- 1 Side entrance
- 2 Level 2 kitchen cabinet layout
- 3 Main floor railing
- 4 Electric Fireplace with tile to mantle

#### Quick Possession Home Highlights

- A Built-in bench in mudroom
- B 9' high main floor ceilings
- C Large walk-in closet
- D Spacious laundry room

Dimensions, sizes, specifications, layouts and materials are approximate only and subject to change without notice. The builder reserves the right to make change and modifications to the information contained herein. E.&O.E.

**Front Drive 160**

Quick  
Possession

**GLENRIDDING  
RAVINE**

**15831 27 Avenue SW  
Edmonton, AB**

1,768 sq ft  
3 bedrooms  
2.5 bathrooms

Craftsman Elevation

**Anthem**



## Features

### Anthem Construction Standards

- Low maintenance architectural asphalt shingles
- Anthem maximizes window coverage on every home to provide your home with natural light.
- Windows are also triple plane low-E argon filled windows above grade
- Includes a 50-gallon gas water tank and 96% high-efficient gas furnace with dual-stage with variable speeds. It also has an integrated HRV system with dedicated pick-up locations in each bathroom with timers for easy use
- Decora type switches throughout the home
- R-50 blown insulation in all attic spaces
- Rough-in waterline to the fridge

### The Interior

- Ceilings are finished with a splatter texture
- Luxury vinyl plank flooring on main floor
- Executive level ceramic tile flooring in upper bathrooms and laundry
- Carpet on finished stairs and upstairs with an 8lb underlay
- Elevated level quartz countertops in kitchen and bathrooms
- Elevated level kitchen backsplash selection
- Secondary cabinet color
- Elevated level undermount stainless steel kitchen
- Undermount bathroom sinks
- Executive level interior door hardware package
- Stainless steel appliance package including a chimney hoodfan and built in microwave
- Black matte lighting package with upgraded pendant lights over the island and upgraded chandelier in the dining area

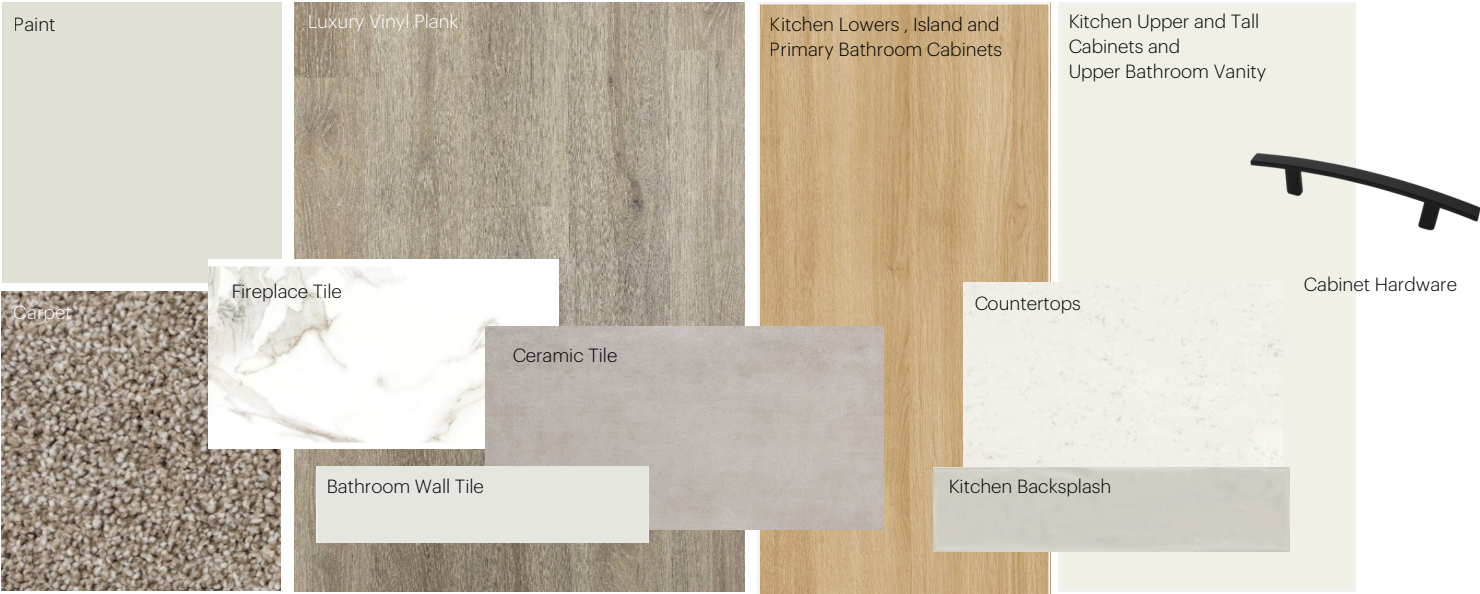
Dimensions, sizes, specifications, layouts and materials are approximate only and subject to change without notice. The builder reserves the right to make change and modifications to the information contained herein. E.&O.E.

Front Drive 160

# Anthem Home Palette Selections

**Model:** Front Drive 160
 **Address:** 15831 27 Avenue, Edmonton AB

## Cabinets, Flooring and Countertops



## Plumbing



## Finishing



# Anthem Home Palette Selections

**Model:** Front Drive 160      **Address:** 15831 27 Avenue, Edmonton AB

## Lighting



Dining Room



Island Pendant



Stairwell



Halls / Closets



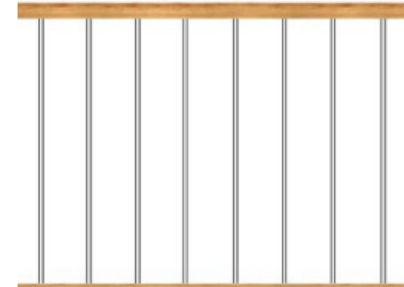
Bedrooms




Bathrooms

\*Number of lights determined by size of vanity

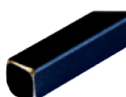
## Railing




Spindle Pattern



Handrail



Iron Color



Post Cap

Post

## Appliances



Fridge



Chimney Hoodfan



Built in microwave



Stove



Dishwasher

