

Quick Possession



DANSEREAU MEADOWS

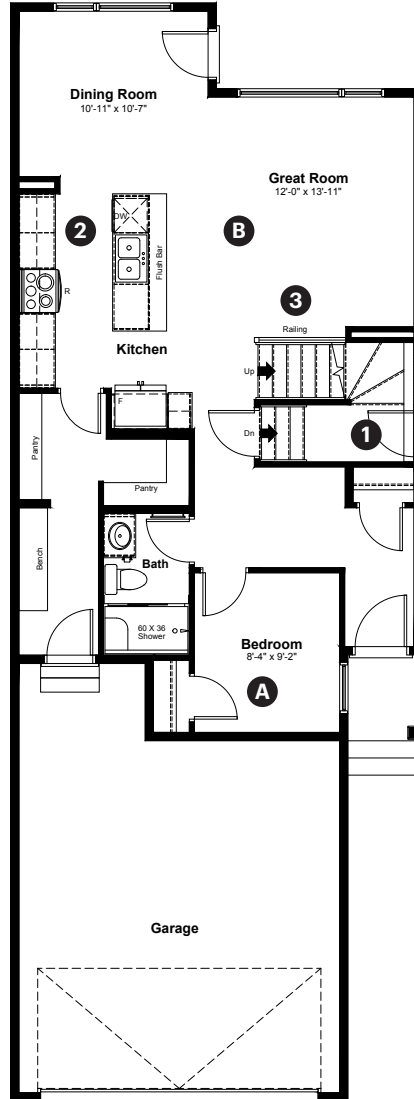
6127 Dansereau Crescent
Beaumont, AB

2,228 sq ft
5 bedrooms
3 bathrooms

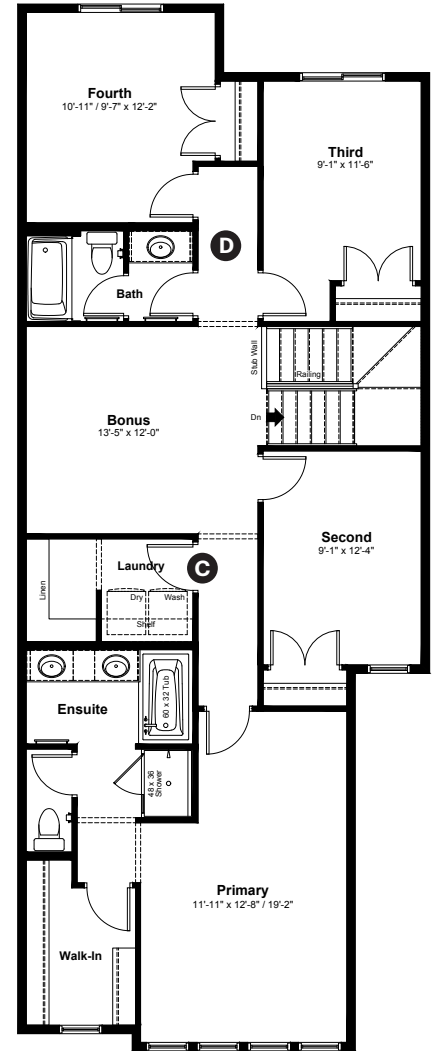
Modern Prairie Elevation

Front Drive 113

Main Floor: 914 sq ft



Upper Floor: 1,314 sq ft



Quick Possession Home Options

- 1 Side entrance
- 2 Level 2 kitchen cabinet layout
- 3 Main floor railing

Quick Possession Home Highlights

- A Main floor bedroom and full bathroom
- B 9' high main floor ceilings
- C Spacious laundry room
- D Four bedrooms upstairs

Dimensions, sizes, specifications, layouts and materials are approximate only and subject to change without notice. The builder reserves the right to make change and modifications to the information contained herein. E.&O.E.

Quick
Possession

Anthem 

**DANSEREAU
MEADOWS**

**6127 Dansereau
Crescent
Beaumont, AB**

2,228 sq ft
5 bedrooms
3 bathrooms

Modern Prairie
Elevation



Features

Anthem Construction Standards

- Low maintenance architectural asphalt shingles
- Anthem maximizes window coverage on every home to provide your home with natural light. Windows are also triple plane low-E argon filled windows above grade
- Includes a 50-gallon gas water tank and 96% high-efficient gas furnace with dual-stage with variable speeds. It also has an integrated HRV system with dedicated pick-up locations in each bathroom with timers for easy use
- Decora type switches throughout the home
- R-50 blown insulation in all attic spaces
- Rough-in waterline to the fridge

The Interior

- Ceilings are finished with a splatter texture
- Luxury vinyl plank flooring on main floor
- Luxury vinyl tile flooring in upper bathrooms and laundry

- Carpet on finished stairs and upstairs with an 8lb underlay
- 2 CM quartz countertops in kitchen and bathrooms
- Upgraded undermount Silgranit kitchen sink
- Stainless steel appliance package including a chimney hood fan
- Rough-in gas line in kitchen
- Upgraded plumbing fixtures throughout home
- Upgraded shower trim in main floor bathroom and primary ensuite
- Tiled shower walls in ensuite
- Undermount bathroom sinks
- Upgraded lighting fixtures throughout home
- Upgraded door hardware throughout home
- Railing with iron spindles on main floor stairwell
- 9' high basement foundation
- Rough-in plumbing added to basement for future suite

Dimensions, sizes, specifications, layouts and materials are approximate only and subject to change without notice. The builder reserves the right to make change and modifications to the information contained herein. E.&O.E.

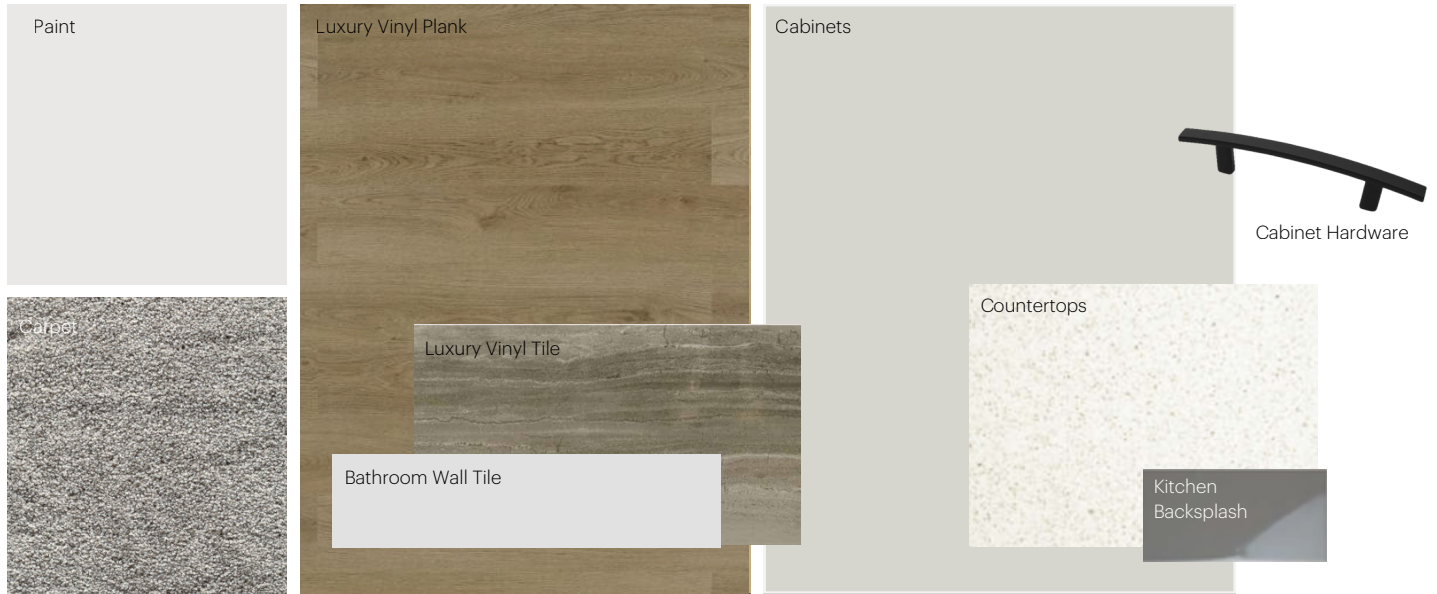
Front Drive 113

Anthem Home Palette Selections

Model: Front Drive 113

Address: 6127 Dansereau Crescent, Beaumont AB

Cabinets, Flooring and Countertops



Plumbing



Finishing



Anthem Home Palette Selections

Model: Front Drive 113

Address: 6127 Dansereau Crescent, Beaumont AB

Lighting



Dining Room



Island Pendant



Stairwell



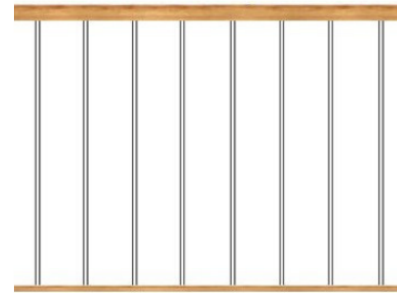
Bathrooms

*Number of lights determined by size of vanity



Bedrooms

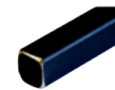
Railing



Spindle Pattern



Handrail



Iron Color



Post Cap

Post

* Handrail, post and cap painted to match the trim color

Appliances



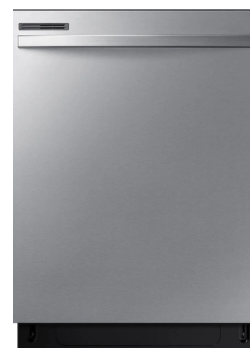
Fridge



Chimney Hoodfan



Electric Range



Dishwasher



Microwave

