

Quick
Possession



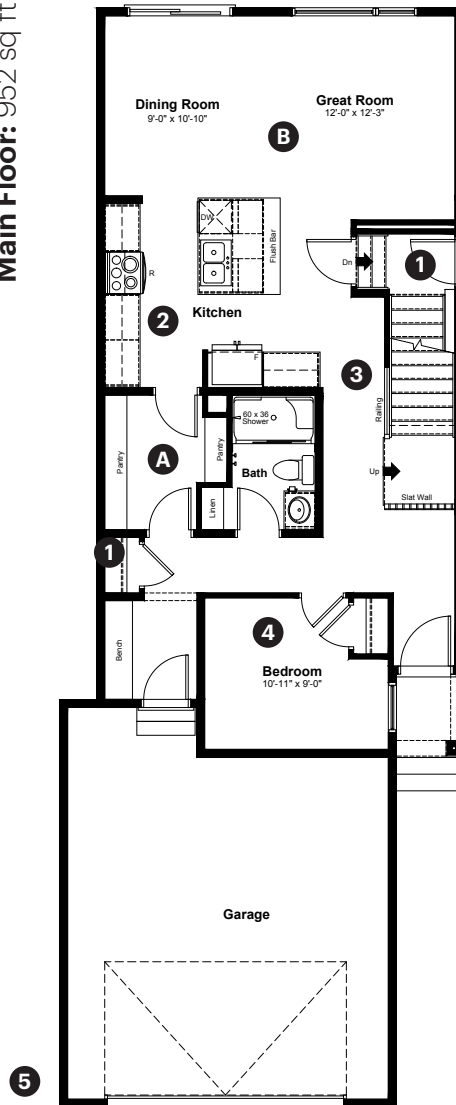
DANSEREAU
MEADOWS

6129 Dansereau
Crescent
Beaumont, AB

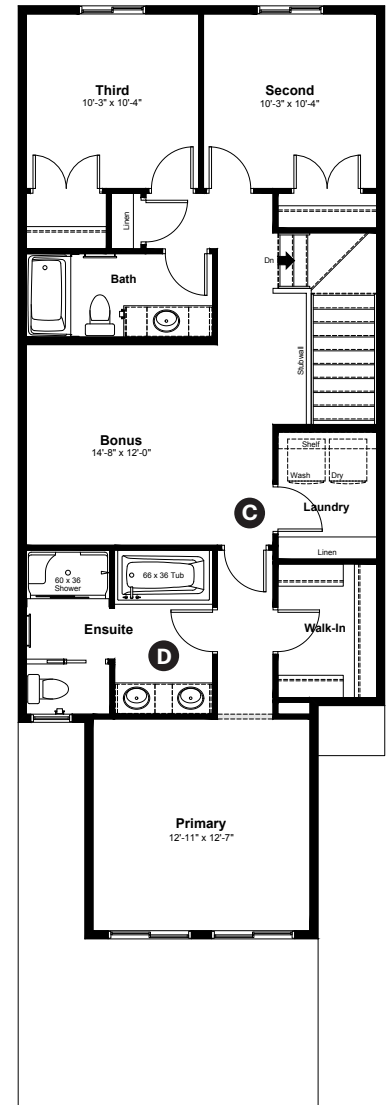
2,076 sq ft
4 bedrooms
3 bathrooms

Prairie
Elevation

Main Floor: 952 sq ft



Upper Floor: 1,124 sq ft



Quick Possession Home Options

- 1 Side entrance
- 2 Level 2 kitchen cabinet layout
- 3 Main floor railing
- 4 Main floor bedroom and full bathroom
- 5 Garage widened by 2'

Quick Possession Home Highlights

- A Walk through pantry
- B 9' high main floor ceilings
- C Upper floor laundry room
- D Dual sinks in ensuite bathroom

Dimensions, sizes, specifications, layouts and materials are approximate only and subject to change without notice. The builder reserves the right to make change and modifications to the information contained herein. E.&O.E.

Front Drive 240

Quick
Possession

DANSEREAU
MEADOWS

6129 Dansereau
Crescent
Beaumont, AB

2,076 sq ft
4 bedrooms
3 bathrooms

Prairie
Elevation

Anthem



Features

Anthem Construction Standards

- Low maintenance architectural asphalt shingles
- Anthem maximizes window coverage on every home to provide your home with natural light. Windows are also triple plane low-E argon filled windows above grade
- Includes a 50-gallon gas water tank and 96% high-efficient gas furnace with dual-stage with variable speeds. It also has an integrated HRV system with dedicated pick-up locations in each bathroom with timers for easy use
- Decora type switches throughout the home
- R-50 blown insulation in all attic spaces
- Rough-in waterline to the fridge

The Interior

- Ceilings are finished with a splatter texture
- Luxury vinyl plank flooring on main floor
- Upgraded luxury vinyl tile flooring in upper bathrooms and laundry
- Carpet on finished stairs and upstairs with an 8lb underlay
- Iron railing on main floor stairwell
- Secondary cabinet color
- Upgraded 3 CM quartz countertops in kitchen and bathrooms
- Upgraded kitchen backsplash selection
- Upgraded undermount silgranit kitchen sink
- Upgraded chrome kitchen faucet
- Upgraded dining room light fixture and pendant light fixtures over island
- Handshower added to main floor bathroom
- Undermount sink in bathrooms
- Stainless steel appliance package including a chimney hoodfan and built in microwave
- Gas line added to kitchen
- 9' high basement foundation

Dimensions, sizes, specifications, layouts and materials are approximate only and subject to change without notice. The builder reserves the right to make change and modifications to the information contained herein. E.&O.E.

Front Drive 240

Anthem Home Palette Selections

Model: Front Drive 240
 Address: 6129 Dansereau Crescent, Edmonton AB

Cabinets, Flooring and Countertops

Paint

Carpet

Luxury Vinyl Plank

Luxury Vinyl Tile

Bathroom Wall Tile

Upper Kitchen Cabinets and Bathrooms

Countertops

Kitchen Backsplash

Lower Kitchen Cabinets and Island

Cabinet Hardware

Plumbing

Kitchen Sink

Bathroom Sinks

Bathroom Faucets

Kitchen Faucet

Tub / Shower Faucet

Main Bath Handshower

Finishing

Deadbolt

Interior Door Knob

Bathroom Accessories

Interior Doors



Anthem Home Palette Selections

Model: Front Drive 240

Address: 6129 Dansereau Crescent, Edmonton AB

Lighting



Dining Room



Bathrooms

*Number of lights determined by size of vanity



Island Pendant

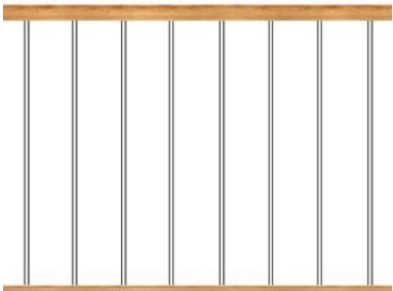


Bedrooms



Stairwell

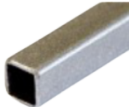
Railing



Spindle Pattern



Handrail



Iron Color



Post Cap

Post

* Handrail, post and cap painted to match the trim color

Appliances



Fridge



Chimney Hoodfan



Electric Range



Dishwasher



Microwave

