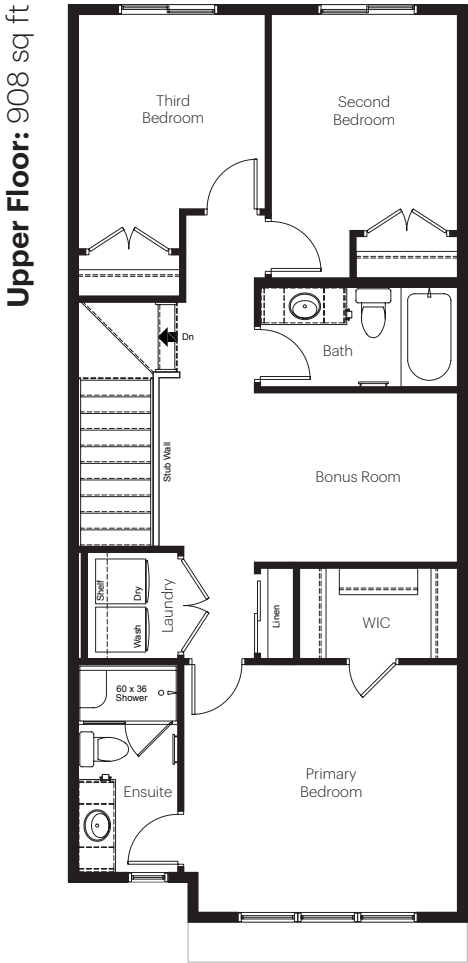
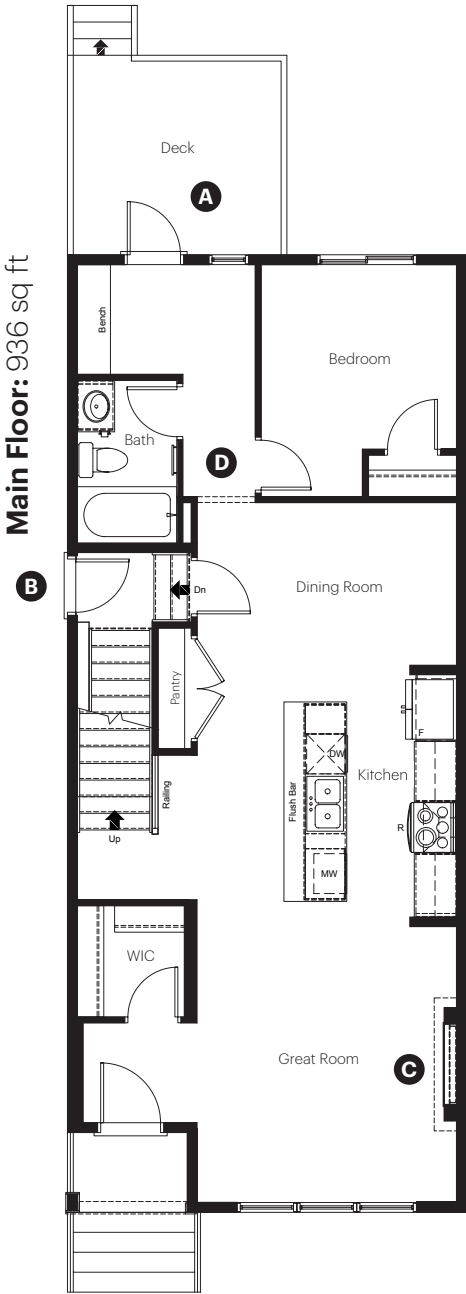


PINECREEK

814 Creekside
Boulevard
Calgary, AB

1,844 sq ft
4 bedrooms
3 bathrooms

Laned 130



Showhome Options

- A** Rear deck with gasline for BBQ
- B** Side entry
- C** Electric fireplace
- D** Main floor bedroom

Dimensions, sizes, specifications, layouts and materials are approximate only and subject to change without notice. The base specification for this home is **Essential**. Any selections shown in the showhome that are above and beyond the essential palette are considered upgrades. E.&O.E

PINE CREEK

**814 Creekside
Boulevard
Calgary, AB**

1,844 sq ft
4 bedrooms
3 bathrooms



Showhome Interior Selections

Cabinets and Countertops

- Elevated level package selections
- Level 3 cabinet layout
- Stainless steel chimney hoodfan
- 3 cm quartz countertops

Flooring and Wall Tile

- Elevated level package selections
- Luxury vinyl plank flooring on main level
- Luxury vinyl tile flooring in wet area's

Fireplace

- Electric fireplace
- Drywall boxout with half height brick surround
- 6" deep mantle, painted white

Interior Railing

- Elevated level package selections
- Railing on main floor stairwell

Plumbing

- Elevated level package selections
- Chrome fixtures
- Undermount stainless steel kitchen sink

Finishing and Paint

- Elevated level package selections
- Satin nickel door hardware
- Chrome bathroom hardware

Lighting

- Elevated level package selections
- Brushed nickel fixtures

Other

- Black exterior windows
- Rear deck with gasline to BBQ
- Gasline to range
- 9' high main floor ceilings
- Irrigation line for future sprinkler
- 9' basement wall foundation
- 3.0 ton air conditioner



Scan to view more information
on this showhome

Dimensions, sizes, specifications, layouts and materials are approximate only and subject to change without notice. The base specification for this home is **Essential**. Any selections shown in the showhome that are above and beyond the essential palette are considered upgrades. E.&O.E