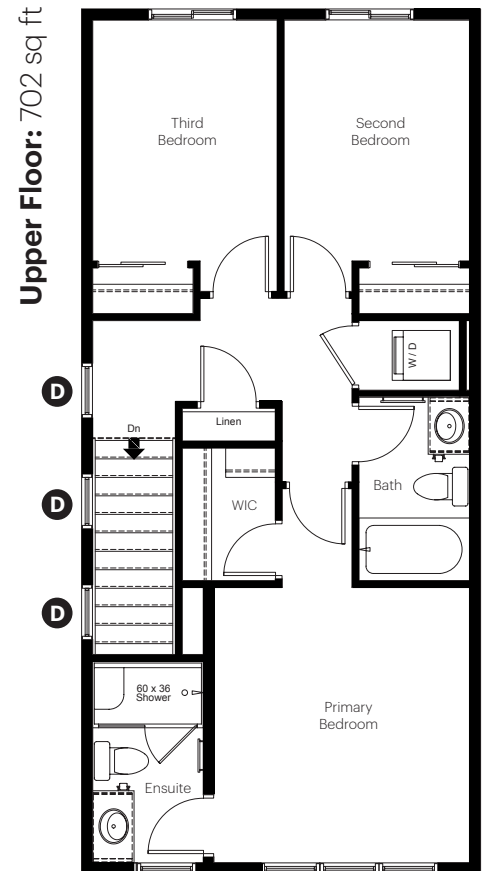
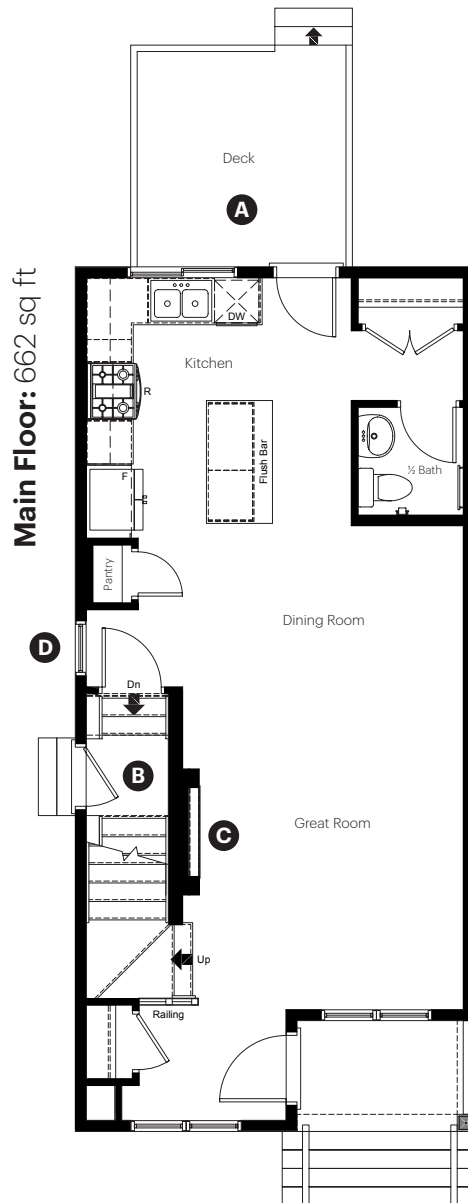


PINE CREEK

806 Creekside
Boulevard
Calgary, AB

1,364 sq ft
3 bedrooms
2.5 bathrooms



Showhome Options

- A** Rear deck with gasline for BBQ
- B** Side entry
- C** Electric fireplace
- D** Side elevation windows

PINE CREEK

**806 Creekside
Boulevard
Calgary, AB**

1,364 sq ft
3 bedrooms
2.5 bathrooms



Showhome Interior Selections

Cabinets and Countertops

- Essential level package selections
- 2 cm quartz countertops
- Black matte cabinet hardware

Flooring and Wall Tile

- Essential level package selections
- Luxury vinyl plank flooring on main level
- Luxury vinyl tile flooring in wet area's

Fireplace

- Electric fireplace
- Drywall boxout painted a feature colour

Interior Railing

- Essential level package selections
- Railing on main floor stairwell

Plumbing

- Essential level package selections
- Chrome fixtures
- Top mount stainless steel kitchen sink

Finishing and Paint

- Essential level package selections
- Satin nickel door hardware
- Chrome bathroom hardware
- Feature paint colour added to primary bedroom

Lighting

- Essential level package selections
- Black matte fixtures
- Elevated fixture added to dining room

Other

- Side and rear treatment for architectural
- Developed basement suite and stairwell
- Slide in gas range in main kitchen
- 9' high main floor ceilings
- 9' basement wall foundation
- Irrigation line for future sprinkler
- 2.0 ton air conditioner
- 20 x 22 detached garage



Scan to view more information
on this showhome

Dimensions, sizes, specifications, layouts and materials are approximate only and subject to change without notice. The base specification for this home is **Essential**. Any selections shown in the showhome that are above and beyond the essential palette are considered upgrades. E.&O.E