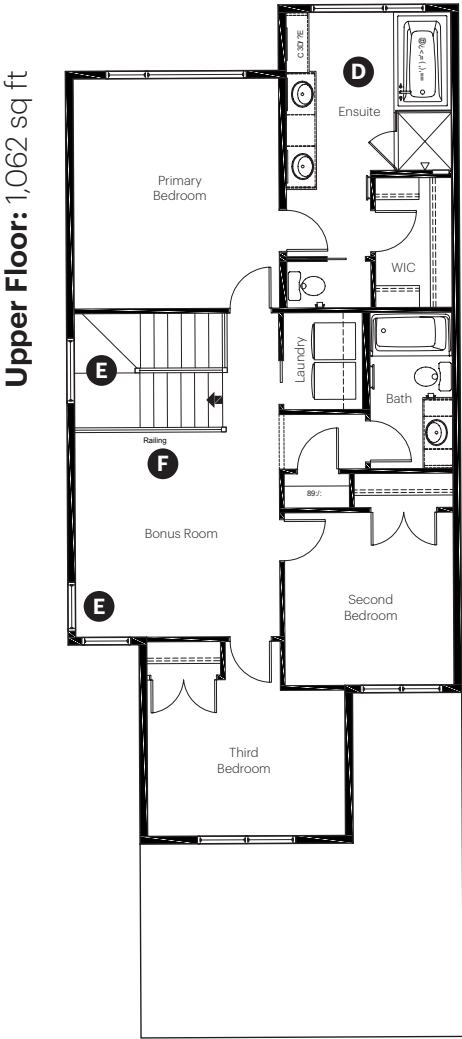
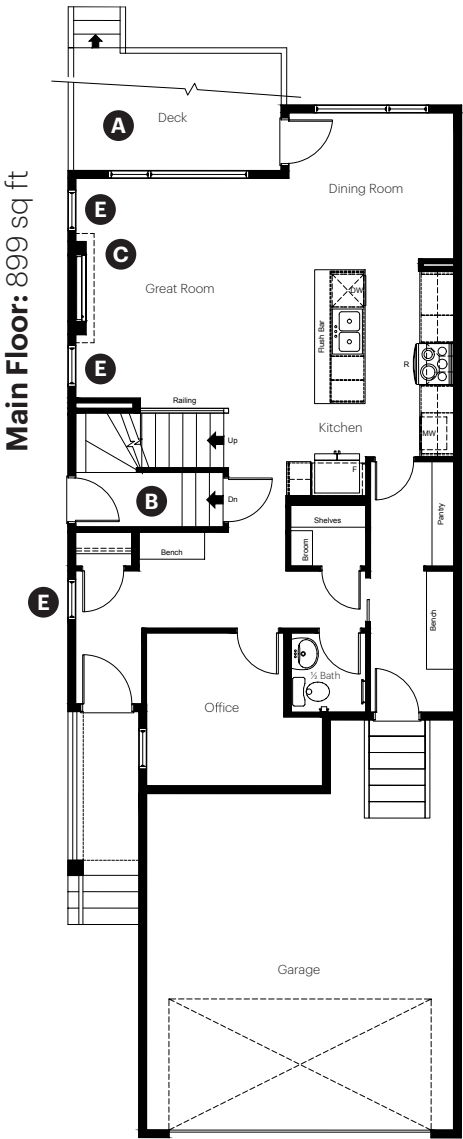


Kinglet

3984 Wren Loop NW
Edmonton, AB

1,961 sq ft
3 bedrooms
2.5 bathrooms

Front Drive 110



Showhome Options

- A Rear deck with gasline for bbq
- B Side entry
- C Electric fireplace
- D Primary ensuite option 1
- E Side elevation windows
- F Railing to upper floor

Dimensions, sizes, specifications, layouts and materials are approximate only and subject to change without notice. The base specification for this home is **Essential**. Any selections shown in the showhome that are above and beyond the essential palette are considered upgrades. E.&O.E

Kinglet

BY BIG LAKE

**3984 Wren Loop NW
Edmonton, AB**

1,961 sq ft
3 bedrooms
2.5 bathrooms



Showhome Interior Selections

Cabinets and Countertops

- Elevated level package selections
- Level 2 cabinet layout
- Secondary cabinet colour on island
- Stainless steel chimney hoodfan
- 3 cm quartz countertops
- Black matte cabinet hardware

Flooring and Wall Tile

- Elevated level package selections
- Luxury vinyl plank flooring on main level
- Luxury vinyl tile flooring in wet area's
- Tiled ensuite shower with shower niche with black trim

Fireplace

- Electric fireplace
- Drywall boxout with half height brick surround
- 6" deep mantle, painted white

Interior Railing

- Elevated level package selections
- Railing on main and upper floor stairwell

Plumbing

- Elevated level package selections
- Chrome fixtures
- Undermount stainless steel kitchen sink

Finishing and Paint

- Elevated level package selections
- Satin nickel door hardware
- Chrome bathroom hardware

Lighting

- Elevated level package selections
- Black matte fixtures
- Chandelier at second floor stairway

Other

- Side and rear treatment for architectural
- Full length mirror in ensuite replaced with 3 - 24x36 vanity mirrors
- 9' high main floor ceilings
- 9' basement wall foundation
- 3.0 ton air conditioner



Scan to view more information
on this showhome

Dimensions, sizes, specifications, layouts and materials are approximate only and subject to change without notice. The base specification for this home is **Essential**. Any selections shown in the showhome that are above and beyond the essential palette are considered upgrades. E.&O.E