

Showhome

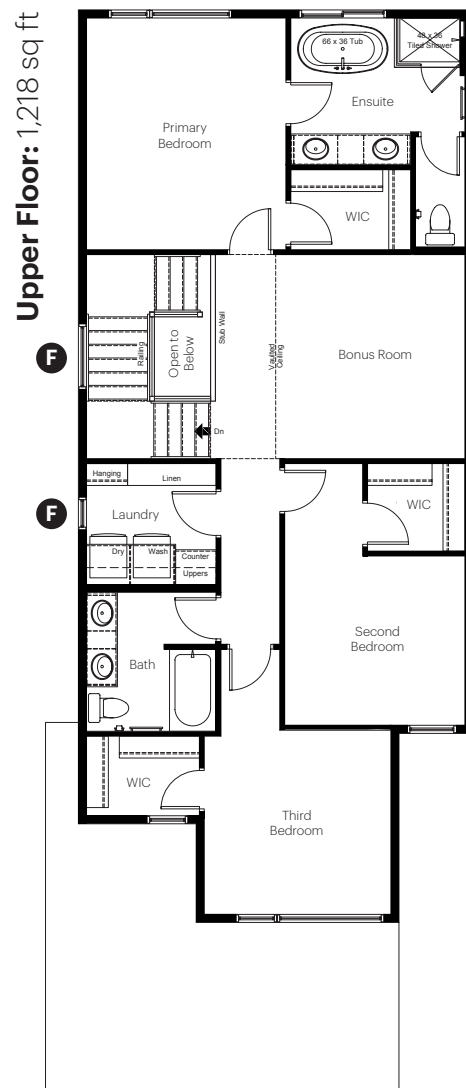
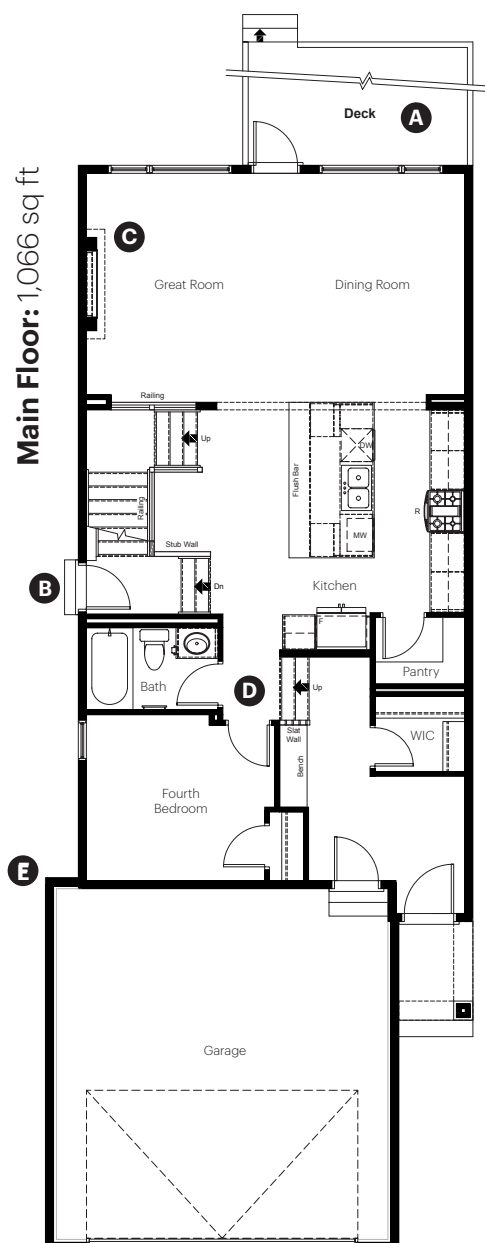
**Kinglet**  
BY BIG LAKE

3982 Wren Loop NW  
Edmonton, AB

2,284 sq ft  
4 bedrooms  
3 bathrooms

Front Drive 120

**Anthem**



#### Showhome Options

- A** Rear deck
- B** Side entry
- C** Electric fireplace
- D** Main floor bedroom option
- E** 2' Added to garage width
- F** Side elevation windows

Dimensions, sizes, specifications, layouts and materials are approximate only and subject to change without notice. The base specification for this home is **Essential**. Any selections shown in the showhome that are above and beyond the essential palette are considered upgrades. E.&O.E

Showhome

**Kinglet**  
BY BIG LAKE

**3982 Wren Loop NW  
Edmonton, AB**

2,284 sq ft  
4 bedrooms  
3 bathrooms

Front Drive 120

**Anthem**



## Showhome Interior Selections

### Cabinets and Countertops

- Executive level package selections
- Level 2 cabinet layout
- MDF painted cabinet fronts
- Secondary cabinet colour on island
- Wood hood with insert
- 3 cm quartz countertops
- Countertop and cabinets added above washer and dryer

### Flooring and Wall Tile

- Executive level package selections
- Hardwood flooring on main level
- Ceramic floor tile in wet area's
- Fully tiled ensuite shower with shower niche and 10MM full glass wall

### Fireplace

- Electric fireplace in living room
- Drywall boxout with floor to ceiling tile surround
- 6" deep mantle, painted in a feature colour



Scan to view more information  
on this showhome

### Interior Railing

- Executive level package selections
- Railing on main floor stairwell

### Plumbing

- Executive level package selections
- Modern, chrome fixtures
- Undermount silgranit kitchen sink
- Freestanding tub in ensuite

### Finishing and Paint

- Executive level package selections
- Satin nickel door hardware
- Chrome bathroom hardware
- Aged White wall and trim paint colour

### Lighting

- Executive level package selections
- Brushed nickel fixtures

### Other

- Rear deck with gasline to BBQ
- Gasline to range
- 9' high main floor ceilings
- Developed basement
- 9' basement wall foundation
- 3.5 ton air conditioner

Dimensions, sizes, specifications, layouts and materials are approximate only and subject to change without notice. The base specification for this home is **Essential**. Any selections shown in the showhome that are above and beyond the essential palette are considered upgrades. E.&O.E