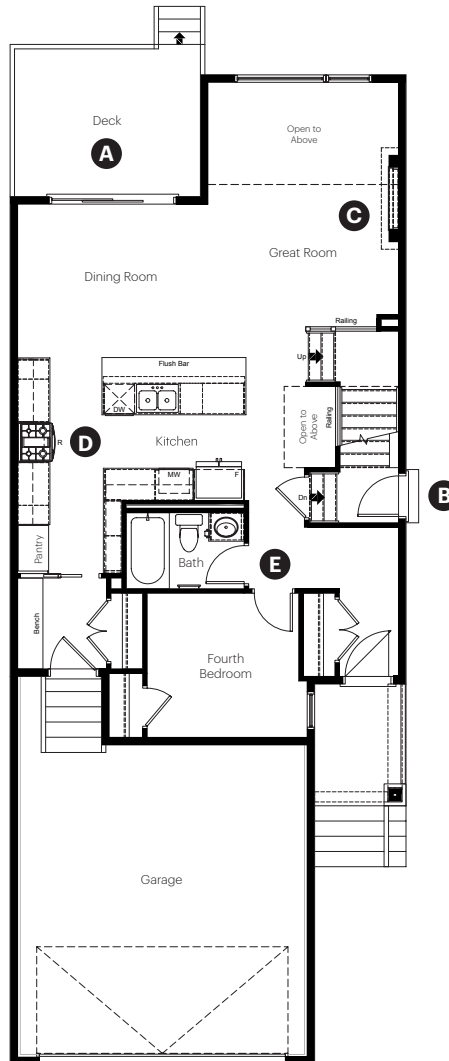


DANSEREAU
MEADOWS

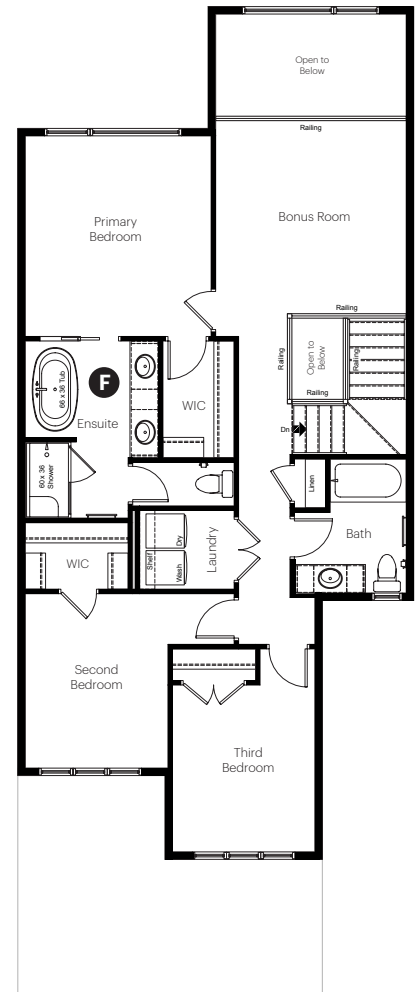
105 Dansereau Way
Beaumont, AB

2,081 sq ft
4 bedrooms
3 bathrooms

Main Floor: 993 sq ft



Upper Floor: 1,099 sq ft



Showhome Options

- A** Rear deck
- B** Side entry
- C** Electric fireplace
- D** Kitchen option 1
- E** Main floor bedroom option
- F** Primary ensuite option 1

DANSEREAU MEADOWS

**105 Dansereau Way
Beaumont, AB**

2,081 sq ft
4 bedrooms
3 bathrooms



Showhome Interior Selections

Cabinets and Countertops

- Elevated level package selections
- Level 2 cabinet layout
- Secondary cabinet colour on island
- Wood hood with insert
- Stealth brackets on island
- 3 cm quartz countertops

Flooring and Wall Tile

- Elevated level package selections
- Luxury vinyl plank flooring on main level
- Luxury vinyl tile flooring in wet area's

Fireplace

- Electric fireplace in living room
- Half height drywall boxout with half height brick surround
- 6" deep mantle, painted in a feature colour

Interior Railing

- Elevated level package selections
- Railing on main and upper floor stairwell
- Railing added to bonus room open to below area

Plumbing

- Elevated level package selections
- Chrome fixtures
- Undermount stainless steel kitchen sink
- Freestanding tub in ensuite

Finishing and Paint

- Elevated level package selections
- Satin nickel door hardware
- Chrome bathroom hardware
- Standard white wall and trim paint colour

Lighting

- Elevated level package selections
- Brushed nickel fixtures
- Chandelier at second floor stairway

Other

- Rear deck with gasline to BBQ
- Slide in gas range in kitchen
- 9' high main floor ceilings
- Irrigation line for future sprinkler
- 3.0 ton air conditioner



Scan to view more information
on this showhome

Dimensions, sizes, specifications, layouts and materials are approximate only and subject to change without notice. The base specification for this home is **Essential**. Any selections shown in the showhome that are above and beyond the essential palette are considered upgrades. E.&O.E