



# This Spring, Finished Basement Suites **Included.**



## Your Future is Bright with Anthem's Laned Homes

### Our Suite Deal

Your future grows with the Laned 180 model – designed for those ready to take the next step. Including a two bedroom income suite from \$499,900\* inc. GST.

	5% DP	10% DP	20% DP
<b>Limited Time Purchase Price (inc. GST)</b>	<b>\$499,900</b>	<b>\$499,900</b>	<b>\$499,900</b>
Down Payment	\$24,995	\$49,990	\$99,980
CMHC Loan Insurance Premium	\$18,996	\$13,947	\$ -
Mortgage Amount (incl. CMHC)	\$493,901	\$463,857	\$399,920
Monthly Mortgage Payment <b>WITHOUT an Income Suite</b>	\$2,676	\$2,513	\$2,167
Property Tax (Monthly – Edmonton)	\$425	\$425	\$425
Insurance (Monthly)	\$150	\$150	\$150
2 Bedroom Legal Suite Rental Income*	\$(1,200)	\$(1,200)	\$(1,200)
<b>Monthly Mortgage Payment WITH Income Suite</b>	<b>\$2,051</b>	<b>\$1,888</b>	<b>\$1,542</b>

\* Conditions apply. Visit website for more information or speak with an Anthem sales representative. E&O.E.



# Own a Brand New 5 Bedroom Home for \$1,888/month\*

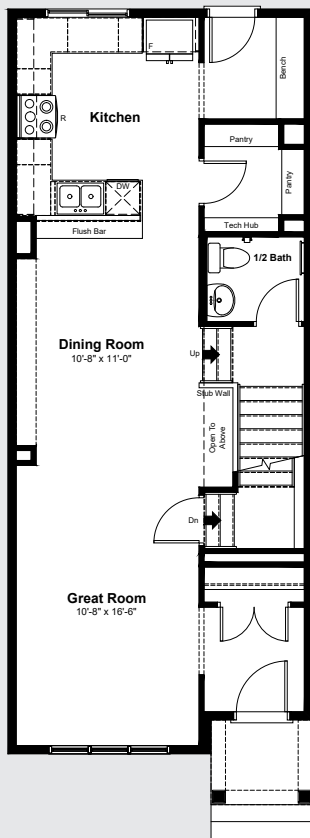
Limited Lots Available

## Laned 180 Model

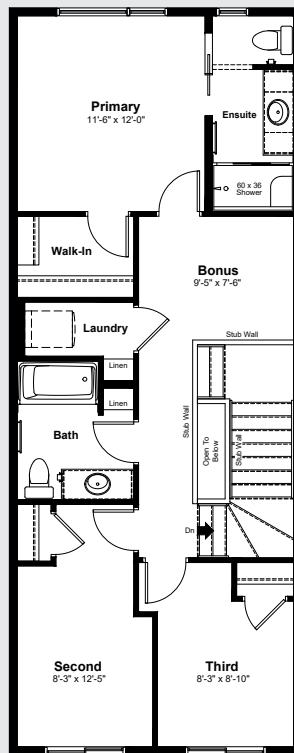
Your future grows with the Laned 180 – designed for those ready to take the next step.

Featuring 1,598 sq ft across two levels, 3 bedrooms and 2.5 bathrooms, this home offers the space and flexibility to grow with you.

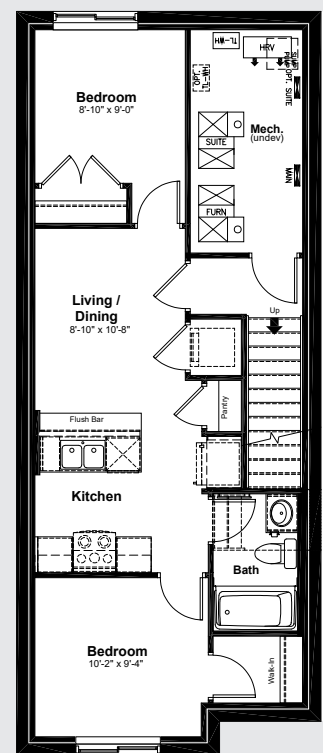
With the addition of a fully developed legal 2 bedroom basement suite, you can maximize your rental potential and build even greater financial security from day one.



Standard Main Floor  
780 sq ft



Standard Upper Floor  
818 sq ft



Two Bedroom Legal  
Basement Suite  
565 sq ft