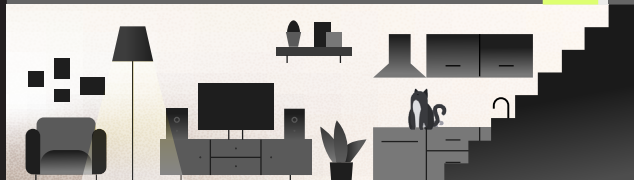




This Spring, Finished Basement Suites **Included.**



Your Future is Bright with Anthem's Laned Homes

Our Suite Deal

Your path to home ownership starts with our most popular model - the Laned 150 including a one bedroom income suite from \$474,900* inc. GST.

	5% DP	10% DP	20% DP
Limited Time Purchase Price (inc. GST)	\$474,900	\$474,900	\$474,900
Down Payment	\$23,745	\$47,490	\$94,980
CMHC Loan Insurance Premium	\$18,046	\$13,250	\$ -
Mortgage Amount (incl. CMHC)	\$469,201	\$440,660	\$379,920
Monthly Mortgage Payment WITHOUT an Income Suite	\$2,542	\$2,387	\$2,058
Property Tax (Monthly - Edmonton)	\$404	\$404	\$404
Insurance (Monthly)	\$150	\$150	\$150
1 Bedroom Legal Suite Rental Income*	\$(1,000)	\$(1,000)	\$(1,000)
Monthly Mortgage Payment WITH Income Suite	\$2,096	\$1,941	\$1,612

* Conditions apply. Visit website for more information or speak with an Anthem sales representative. E&O.E.



Own a Brand New 4 Bedroom Home for \$1,941/month*

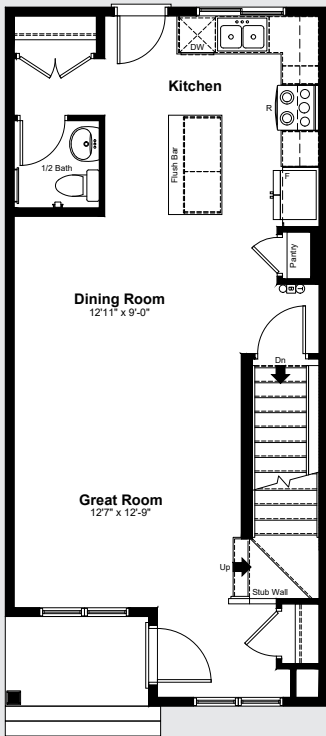
Limited Lots Available

Laned 150 Model

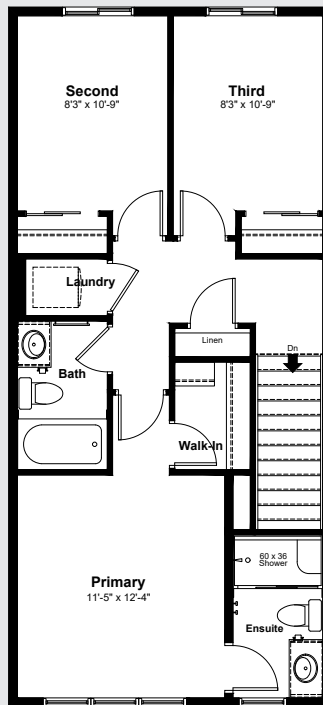
Get started on your path to home ownership with our most popular model – the Laned 150.

Featuring 1,364 sqft across two levels, 3 bedrooms, and 2.5 bathrooms, this home is perfect for starting your journey.

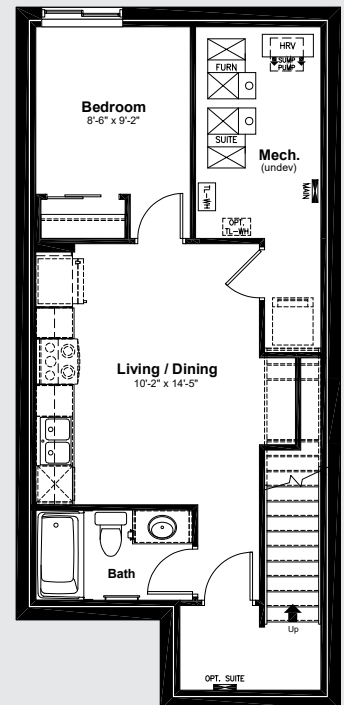
With the addition of the fully developed legal 1 bedroom basement income suite, you'll be well on your way to a financially secure future.



Standard Main Floor
662 sq ft



Standard Upper Floor
702 sq ft



One Bedroom Legal
Basement Suite
419 sq ft